

Some email communications may be filtered to your Spam or Junk folder, even if you have subscribed to them. Please mark aaciupdate@aaci-cancer.ccsend.com as a Safe Sender to ensure that AACI emails are delivered to your inbox.

News From the Association of American Cancer Institutes | April 2020

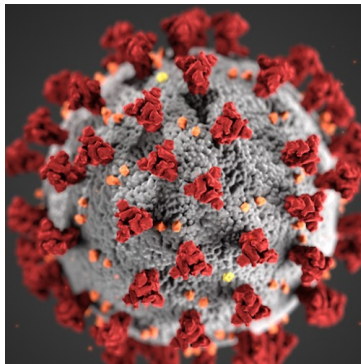
[Click here](#) to read the full newsletter on our website.



[Awards & Honors](#) | [Grants & Gifts](#) | [Leadership Transitions](#) | [Research Highlights](#) | [Other News](#)

AACI HEADLINES

[AACI Announces Member Forum for COVID-19 Discussion](#)



AACI continues to closely monitor the coronavirus outbreak. To facilitate communication around this rapidly-evolving topic, AACI launched a Slack workspace as a forum for AACI cancer center members and National Cancer Institute leaders to share challenges and best practices related to COVID-19 and cancer. **To ensure confidentiality and encourage open discussion, all requests to join the forum require administrative approval from AACI.** [Read More](#)

[COVID-19 Concerns Prompt Meeting Changes](#)

The health and well-being of AACI meeting attendees, exhibitors, and cancer center patients is our top priority. With that in mind, we have been closely monitoring the coronavirus outbreak that has led to COVID-19 infection across the United States. Due to mounting concerns about COVID-19 transmission and travel restrictions, AACI has postponed its annual Hill Day and is exploring options for its upcoming meetings. [Read More](#)

[AACI Urges Immediate Implementation of Defense Production Act](#)

In a [March 23 letter](#), AACI implored President Donald Trump to immediately invoke the Defense Production Act (DPA) to marshal American manufacturing to forcefully confront the COVID-19 emergency. As of March 23 the president had yet to fully invoke and utilize the DPA, while cancer centers continued to weigh in with their members of Congress on their respective situations as it related to personal protective equipment (PPE) and other supplies. Signed by the leaders of 97 AACI cancer centers in the United States, the letter noted that cancer patients are particularly susceptible to serious complications and poor outcomes from COVID-19, and that some cancer center patients have already contracted the virus and died from respiratory failure. In a March 27 presidential memorandum, President Trump directed his administration to use "any and all authority available under the Defense Production Act to require General Motors to accept, perform, and prioritize Federal contracts for ventilators." [Read More](#)

[Submit Your Cancer Center News for May](#)

Thank you to the communications professionals who consistently provide AACI with news from their cancer centers — especially during the COVID-19 crisis. The May 2020 issue of AACI *Update* will be published on **Friday, May 1**. The deadline to submit your cancer center news is **Tuesday, April 28**. Please send your cancer center news to aaciupdate@aaci-cancer.org.

[View Our Submission Guidelines](#)

[Submit News](#)

NEWS FROM THE CENTERS

AWARDS & HONORS

Cukierman Named AGA Fellow

[Fox Chase Cancer Center, Temple Health](#)



Edna Cukierman, PhD, co-director of the Marvin & Concetta Greenberg Pancreatic Cancer Institute at Fox Chase Cancer Center, has been named a fellow of the American Gastroenterological Association (AGA). Her induction as a fellow is notable because historically AGA has been a medical association. Though Dr. Cukierman is not a medical doctor, she joined AGA to better understand the medical side of gastroenterology.

[Read More](#)

Fang Elected Fellow to the Society of Behavioral Medicine

[Fox Chase Cancer Center, Temple Health](#)



Carolyn Fang, PhD, a researcher at Fox Chase Cancer Center, has been elected as a fellow to the Society of Behavioral Medicine. Much of Dr. Fang's research focuses on understanding how behavioral, biological, and psychosocial factors may contribute to increased risk for cancer or other chronic diseases. Some of her work is focused specifically on underserved Asian American populations. [Read More](#)

GRANTS & GIFTS

Innovative Platform for Landmark Study Created, Opening Data to More People

[City of Hope Comprehensive Cancer Center](#)

Additional \$5 Million in Funding From State of Kansas to Support Ongoing Research

[The University of Kansas Cancer Center](#)

\$3 Million Grant Funds Study of Osteoporosis Drug for Breast Cancer Prevention

[Siteman Cancer Center](#)

\$2.7 Million Awarded to Study How AI Can Improve Cancer Diagnosis

[UCLA Jonsson Comprehensive Cancer Center](#)

Drug Combination Shows Promise in Women With Recurrent Ovarian Cancer

University of New Mexico Comprehensive Cancer Center

LEADERSHIP TRANSITIONS

Deputy Director Appointed

Cancer Center at Illinois



Paul J. Hergenrother, PhD, was appointed the Cancer Center at Illinois (CCIL) deputy director, effective March 1. Dr. Hergenrother currently co-leads the CCIL research program, Cancer Discovery Platforms Across the Engineering-Biology Continuum. He joined the University of Illinois at Urbana-Champaign faculty in 2001. [Read More](#)

Oto Appointed Radiology Chair

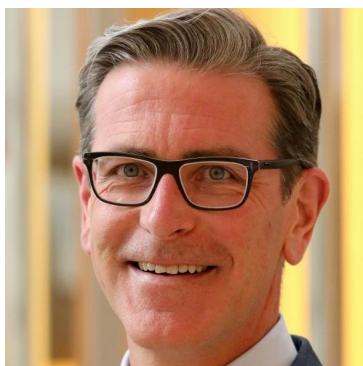
The University of Chicago Medicine Comprehensive Cancer Center



Aytekin Oto, MD, has been appointed chair of the Department of Radiology at the University of Chicago. His research, which is supported by NIH funding, focuses on the detection of prostate cancer using MRI and utilizes new research in image acquisition and interpretation to guide biopsies and discover prostate cancer earlier and more effectively. [Read More](#)

Sampson Named to New Leadership Role

Duke Cancer Institute, Duke University Medical Center

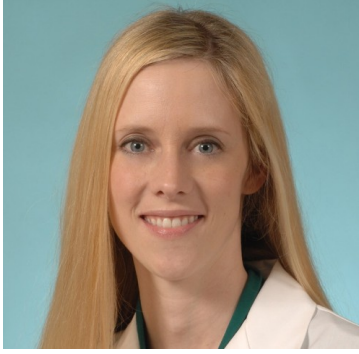


John H. Sampson, MD, PhD, MBA, chair of the Duke Department of Neurosurgery, has assumed the role of president of the Private Diagnostic Clinic (PDC). The PDC is the physician practice of Duke Health, with 1,850 physicians and additional provider members practicing in Duke University hospitals and more than 140 primary and specialty clinics across North Carolina. [Read More](#)

Perkins Named Director of Proton Therapy Center

Siteman Cancer Center

Stephanie M. Perkins, MD, a Washington University associate professor of radiation oncology, has been named director of the S. Lee Kling Proton Therapy Center at Siteman Cancer Center at Barnes-Jewish Hospital and Washington University School of Medicine in St. Louis. She began her new role March 1. [Read More](#)



Director of Community Outreach and Cancer Health Equity Announced

[The University of Chicago Medicine Comprehensive Cancer Center](#)

Gina Curry, MPH, MBA, is the new director of the UChicago Medicine Comprehensive Cancer Center Office of Community Engagement & Cancer Health Equity. Curry has over 15 years in community-engaged academic research and is well versed in program development, training design, coalition building, and multi-institutional collaborations. In her role as director, Curry will develop and oversee community-based education, outreach, and research programs and serve as a liaison between cancer center investigators and community partners. [Read More](#)

RESEARCH HIGHLIGHTS

Research Suggests Studies of a Key Tumor Suppressor Protein Need a Second Look

[University of Michigan Rogel Cancer Center](#)

Study Reveals an Inherited Origin of Prostate Cancer in Families

[Vanderbilt-Ingram Cancer Center](#)

Genetically Engineered Bone Marrow Cells Slow Growth of Prostate, Pancreatic Cancer Cells in Mice

[Sidney Kimmel Comprehensive Cancer Center at Johns Hopkins University](#)

Statins Starve Cancer Cells to Death

[Sidney Kimmel Comprehensive Cancer Center at Johns Hopkins University](#)

Triple-Negative Breast Cancer Drug Therapy Shows Promise

[Vanderbilt-Ingram Cancer Center](#)

Older Women With Breast Cancer May Benefit From Genetic Testing

[Stanford Cancer Institute](#)

Anti-Leukemia Compound Induces Complete Remission in Mouse Models

[University of Michigan Rogel Cancer Center](#)

Study Provides Guidance to Avoid Unnecessary Thyroid Biopsies

[University of Florida Health Cancer Center](#)

3D Lung Cancer Spheroids Reveal Hidden Drivers of Disease

[Stanford Cancer Institute](#)

Pembrolizumab Shows Promise for Some Advanced, Hard-to-Treat Rare Cancers

[The University of Texas MD Anderson Cancer Center](#)

Protein Could Offer Therapeutic Target for Breast Cancer Metastasis

[UK Markey Cancer Center](#)

Cancer Patients Over 65, on Multiple Medicines, at Higher Risk of Hospitalization

Sidney Kimmel Cancer Center at Jefferson Health

OncoMX Knowledgebase Enables Research of Cancer Biomarkers and Related Evidence

GW Cancer Center

OTHER NEWS

SITC Launches COVID-19 Discussion Forums

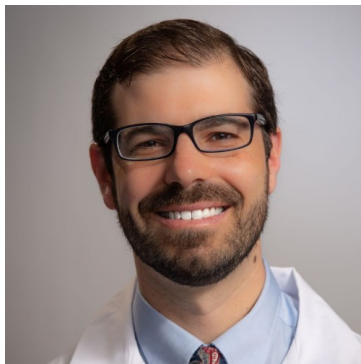
Society for Immunotherapy of Cancer



The Society for Immunotherapy of Cancer (SITC), an AACI sustaining member, has launched two new online communities to rapidly disseminate critical information related to COVID-19. These forums—Implications for Patient Management and Considerations for Basic and Translational Research—aim to spark conversations between professionals on the frontlines of this pandemic to facilitate communication in real time. [Read More](#)

Expert Team Tackles Thyroid, Parathyroid Diseases

University of New Mexico Comprehensive Cancer Center



Nathan Boyd, MD, and his team recently launched The University of New Mexico Thyroid and Parathyroid Surgery Program, housed at the UNM Comprehensive Cancer Center, to offer state-of-the-art treatments for thyroid cancer and other diseases of the thyroid and parathyroid glands. [Read More](#)

KU Cancer Center Sponsors Vaping Town Hall

The University of Kansas Cancer Center

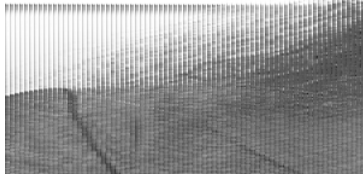


Around 60 teens attended a special town hall meeting on vaping sponsored by The University of Kansas Cancer Center in partnership with the Kansas City Kansas School District and a local television station. **Laura Martin, PhD, Matthias Salathe, MD, and Roy Jensen, MD**, director of the cancer center, participated in the event. Materials developed for this town hall are available in the [AACI Public Policy Resource Library](#). [Read More](#)

Ohio State Announces Passing of Leukemia Scientist Clara Bloomfield

The Ohio State University Comprehensive Cancer Center, James Cancer Hospital & Solove Research Institute

OSUCCC – James has announced the passing of **Clara D. Bloomfield, MD**, a distinguished university professor at The Ohio State University and a former director and longtime senior adviser to The James. Dr.



When Treating Bone Metastasis, It Takes a Team

[Duke Cancer Institute, Duke University Medical Center](#)



Duke orthopedic surgical oncologists **Brian Brigman, MD, PhD**, **William Eward, MD, DVM**, and **Julia Visgauss, MD**; interventional radiologist **Alan Alper Sag, MD**; radiation oncologist **Nicole Larrier, MD, MS**; and orthopedic oncology nurse practitioner **Pam Pennigar, MSN, FNP**, launched a Bone Metastasis Clinic, focusing on patients whose cancer has spread to their arms, legs, or pelvis. [Read More](#)

Collaboration With One-of-a-Kind Drug Production Lab Accelerates Innovation

[VCU Massey Cancer Center](#)

Established in 2017 within the VCU College of Engineering, the Medicines for All Institute (M4ALL) at VCU is an internationally distinctive facility equipped to manufacture large volumes of targeted therapeutics for the university to conduct research. In addition, it works on developing new lower cost methods for the preparation of global health drugs associated with HIV, tuberculosis, and malaria. [Read More](#)

Cardio-Oncology Gets to the Heart of Cancer Patients' Health

[Cedars-Sinai Cancer](#)

Experts in the Cedars-Sinai Cardio-Oncology Program work alongside oncologists to encourage heart monitoring before, during, and after cancer treatment. The program is more relevant than ever because cancer patients are living longer than ever. With an uptick in longevity, many cancer survivors are faced with additional health concerns, including heart failure. [Read More](#)

JOB OPPORTUNITIES

Cancer Epigenetics Training Program

[Sylvester Comprehensive Cancer Center, University of Miami Health System](#)

CCTO Investigator - Initiated Trial Specialist

[Stony Brook Cancer Center](#)

Director Marketing - Cancer Center

[Simmons Comprehensive Cancer Center, UT Southwestern Medical Center](#)

Director of Administrative Programs

[UCI Chao Family Comprehensive Cancer Center](#)

Director of Clinical Trials Office - Hem/Onc Clinical Trials

[Penn State Cancer Institute](#)



AACI/AACR Hill Day

POSTPONED

[Learn More](#)



12th Annual AACI CRI Meeting

EARLY REGISTRATION EXTENDED

July 7-9, 2020

Chicago

[Learn More](#)



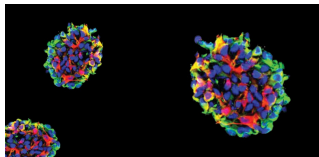
2020 AACI/CCAF Annual Meeting

October 11-13, 2020

Kansas City

[Save the Date](#)

MEMBER MEETING ANNOUNCEMENTS



Cancer Stem Cell Conference 2020

August 4-6, 2020

Cleveland, OH

[Learn More](#)



Medical Arts Building
3708 Fifth Avenue, Suite 503
Pittsburgh, PA 15213
412-647-6111

FOLLOW US

