

Some email communications may be filtered to your Spam or Junk folder, even if you have subscribed to them. Please mark aaciupdate@aaci-cancer.ccsend.com as a Safe Sender to ensure that AACI emails are delivered to your inbox.

News From the Association of American Cancer Institutes | December 2020

[Click here](#) to read the full newsletter on our website.



[Awards & Honors](#) | [Grants & Gifts](#) | [Leadership Highlights](#) | [Research Highlights](#) | [Other News & COVID-19](#)

AACI HEADLINES

Champion for Cures Nominations Now Open



AACI cancer center directors are invited to submit nominations for the 2021 **Champion for Cures Award**. AACI established the award in 2018 to recognize an individual or individuals who, through direct financial support of an AACI cancer center, demonstrate exceptional leadership in advancing cancer research and care and in inspiring others to do the same. The Champion for Cures Award was presented virtually at the 2020 AACI/CCAF Annual Meeting to Nike, Inc., co-founder Phil Knight and his wife, Penny (pictured). [Read More](#)

CRI Benchmarking Report Published in ASCO Journal



AACI Clinical Research Innovation (CRI) is pleased to share the publication of an article in the November issue of ASCO's *JCO Oncology Practice*. "**Clinical Trial Metrics: The Complexity of Conducting Clinical Trials in North American Cancer Centers**" summarizes the results of a comprehensive benchmarking survey sent to AACI member centers from 2018-2019 to assess cancer center clinical trials office workload, funding, staffing, and trial activation timelines. [Read More](#)

AACI Urges President Trump to Share Key COVID-19 Information With Biden Transition Team

In a [November 20 letter](#) to President Donald Trump, AACI called on the Trump administration to share vital information about its coronavirus response with President-elect Joe Biden and his transition team. AACI joins the American Hospital Association, the American Medical Association, the American Nurses Association, and other major medical associations to ask the Trump administration to cooperate with the Biden transition team to ensure continuity of care for patients, particularly as it relates to COVID-19. [Read More](#)



The AACI Physician Clinical Leadership Initiative (PCLI) will host "Oncology Workforce Challenges: The Role of the Advanced Practice Provider (APP) in Academic Oncology" at 1:00 pm eastern time on **Thursday, December 17**. [Read More](#)

NEWS FROM THE CENTERS

AWARDS & HONORS

Siegel Receives American College of Radiology Honor

Siteman Cancer Center



Barry A. Siegel, MD, a professor of radiology and of medicine at Washington University School of Medicine in St. Louis who sees patients at Siteman Cancer Center, has received the College of Radiology's highest honor for his more than 40 years of leadership in the nuclear medicine community. [Read More](#)

Fahy Named Endowed Professor

University of New Mexico Comprehensive Cancer Center

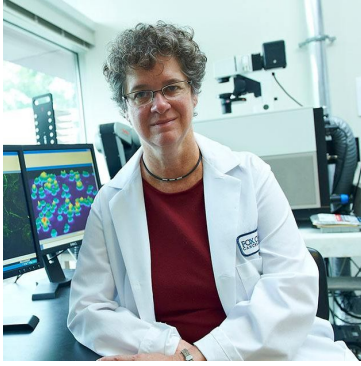


Bridget Fahy, MD, has been appointed to the position of Victor and Ruby Hansen Surface Endowed Professor of Complex Surgical Oncology. Dr. Fahy is currently a professor and chief of the Division of Surgical Oncology in the Department of Surgery at the UNM School of Medicine. She also is the medical coordinator of the UNM Comprehensive Cancer Center's surgical services. [Read More](#)

Golemis Appointed Senior Editor for eLife

Fox Chase Cancer Center, Temple Health

Erica Golemis, PhD, deputy chief science officer and co-leader of the Molecular Therapeutics research program at Fox Chase Cancer Center, was recently appointed senior editor at *eLife*, an open-access, peer-reviewed journal. The journal is supported by the Howard Hughes Medical Institute and other leading research organizations. [Read More](#)



Sullivan Honored for Leadership in Quantitative Imaging Biomarkers

Duke Cancer Institute, Duke University Medical Center

Daniel Sullivan, MD, a former member of Duke Cancer Institute, was recently honored by the Prevent Cancer Foundation with the James L. Mulshine MD Leadership Award for his work in founding and chairing the Quantitative Imaging Biomarkers Alliance. At the National Cancer Institute, Dr. Sullivan provided leadership to large population-based studies on digital mammography and CT screening for lung cancer.

[Read More](#)

Miaskowski Recognized by Friends of the National Institute of Nursing Research

UCSF Helen Diller Family Comprehensive Cancer Center



Christine Miaskowski, RN, PhD, FAAN, was awarded the 2020 Ada Sue Hinshaw Award from the Friends of the National Institute of Nursing Research. For 40 years, Dr. Miaskowski has been investigating the causes of, and solutions for, the debilitating side effects of cancer treatment. [Read More](#)

Gutmann Receives Neuro-oncology Scientific Award

Siteman Cancer Center



David H. Gutmann, MD, PhD, vice chair for research affairs in the Department of Neurology at Washington University School of Medicine in St. Louis and a Siteman Cancer Center research member, is a recipient of the 2020 Neuro-oncology Scientific Award from the American Academy of Neurology. [Read More](#)

Western Region Society of Nuclear Medicine Honors Iagaru

Stanford Cancer Institute

The Western Region Society of Nuclear Medicine has presented **Andrei Iagaru, MD**, with its Sanjiv Sam Gambhir, MD, PhD, 2020 Distinguished Scientist Award. The award was named for Dr. Gambhir, a leader at Stanford, who dedicated his career to developing methods of early disease detection, utilizing molecular imaging to flag signals of disease in its nascent stages. [Read More](#)



STAT Honors Pioneering Work on Focused Ultrasound, Cancer

[University of Virginia Cancer Center](#)



Health news website STAT has honored **Natasha Sheybani, PhD**, as one of the next generation of scientific superstars for her work in focused ultrasound, cancer immunology, and nuclear medicine while a graduate student at the University of Virginia. [Read More](#)

GRANTS & GIFTS

\$20 Million Awarded to Expand Access to Care and Community Health Partnerships

[Sidney Kimmel Comprehensive Cancer Center at Johns Hopkins University](#)

New Study to Identify Predictors of Chemotherapy-Associated Pain Condition

[Cleveland Clinic Cancer Center](#)

Using Genetic Data to Overcome Disparities in Colon Cancer Rates

[Fred Hutchinson Cancer Research Center](#)

Researcher Receives \$2.9 Million for Work Improving Lung Cancer Radiation Therapy Effectiveness

[Indiana University Melvin and Bren Simon Comprehensive Cancer Center](#)

Exploring Autophagy as a Therapeutic Strategy Against Frequent Mutations in Non-Small Cell Lung Cancer

[Rutgers Cancer Institute of New Jersey](#)

Cancer Center Receives Grant to Improve Breast Cancer Treatment for Black Women

[Indiana University Melvin and Bren Simon Comprehensive Cancer Center](#)

LEADERSHIP TRANSITIONS

Bergan Named Deputy Director

[Fred and Pamela Buffett Cancer Center](#)

Raymond Bergan, MD, has accepted the position of deputy director of the Fred and Pamela Buffett Cancer Center. He began his duties on November 9. Dr. Bergan joins the Buffett Cancer Center from the Oregon



Health and Sciences University and the Knight Cancer Institute, where he served as associate director for medical oncology among other leadership roles. [Read More](#)

Nursing Leader Joins Duke

Duke Cancer Institute, Duke University Medical Center



Monica Cfarku RN, MSN, BMTCN, CCM, NE-BC, has been named assistant vice president and chief of Oncology Nursing Services, Duke Cancer Institute. Most recently she was the director of Nursing, Ambulatory Oncology at the Knight Cancer Institute at Oregon Health and Science University in Portland, Oregon. [Read More](#)

Cancer Health Equity Position Created, Assistant Director Named

UK Markey Cancer Center



UK Markey Cancer Center has appointed **Lovoria Williams, PhD**, as assistant director for cancer health equity, a newly created position within the Markey leadership structure. The position will form part of the Markey Community Impact Office team, led by **Pamela Hull, PhD**, Markey's associate director for population science and community impact. [Read More](#)

Fang Promoted to Associate Director for Population Science

Fox Chase Cancer Center, Temple Health



Carolyn Y. Fang, PhD, professor and co-leader of the Cancer Prevention and Control Program at Fox Chase Cancer Center, has been promoted to the role of associate director for Population Science. [Read More](#)

RESEARCH HIGHLIGHTS

Age is a Primary Determinant of Melanoma Treatment Resistance, Two Studies Find

Sidney Kimmel Comprehensive Cancer Center at Johns Hopkins University

Large-Scale Cancer Proteomics Study Profiles Protein Changes in Response to Drug Treatments

The University of Texas MD Anderson Cancer Center

Proteogenomics Enhances the Identification of Therapeutic Vulnerabilities in Breast Cancer

Dan L Duncan Comprehensive Cancer Center at Baylor College of Medicine

Researchers Discover How to Boost Efficacy of Vaccine Designed to Prevent Melanoma Recurrence

The Tisch Cancer Institute at Mount Sinai

Study Shows How HIV and Cancer Drugs Accelerate Cellular Aging

UPMC Hillman Cancer Center

Active Surveillance Safe for African Americans With Low-Risk Prostate Cancer

UC San Diego Moores Cancer Center

Positive Outcomes Reported From New Combination Treatment for Ovarian Cancer

Roswell Park Comprehensive Cancer Center

Study Identifies Patients With Lung Cancer Most Likely to Respond to Immunotherapy

UCLA Jonsson Comprehensive Cancer Center

Breast Cancer Discovery Could Help Stop Disease's Deadly Spread

University of Virginia Cancer Center

Are E-Cigarettes Safer Than Cigarettes? Study Sheds Light on the Issue

The University of Kansas Cancer Center

Boosting Stem Cell Activity Can Enhance Immunotherapy Benefits

Georgetown Lombardi Comprehensive Cancer Center

Genome Sequencing Identifies Cancer's Achilles Heel in 'Exceptional Responders'

Dan L Duncan Comprehensive Cancer Center at Baylor College of Medicine

The Secret Signals Tumor Cell Clusters Use to Drive Metastasis

Fred Hutchinson Cancer Research Center

Climate Change Will Give Rise to More Cancers

UCSF Helen Diller Family Comprehensive Cancer Center

Possible Strategy Uncovered for Blocking Prostate Tumor Growth in Bone

Roswell Park Comprehensive Cancer Center

Study Shows FDA-Approved Leukemia Drug May Help Treat Metastatic Melanoma

UK Markey Cancer Center

Potential Target Discovered for Treating Aggressive Cancer Cells

Cancer Center at Brown University

Exploring the Role of Tumor Suppressor Enhancers in the Development of T-cell Acute Lymphoblastic Leukemia

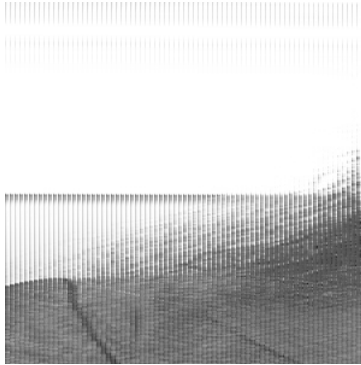
Scientists Discover Roles for a Cellular Motor in Cancer

Huntsman Cancer Institute, University of Utah

OTHER NEWS & COVID-19

Clara D. Bloomfield Center for Leukemia Outcomes Research Created

The Ohio State University Comprehensive Cancer Center – James Cancer Hospital and Solove Research Institute



The Ohio State University Comprehensive Cancer Center – James Cancer Hospital and Solove Research Institute has established a new center dedicated to maintaining and expanding the legacy of the late **Clara D. Bloomfield, MD**. The center will be initially supported by a \$5 million commitment from the OSUCCC – James. [Read More](#)

Collaboration to Accelerate Advancement of Novel Engineered Tumor Infiltrating Lymphocyte Therapy for Solid Tumors

The University of Texas MD Anderson Cancer Center

The University of Texas MD Anderson Cancer Center and Obsidian Therapeutics, Inc., have announced a multi-year strategic collaboration designed to expedite the research and development of novel engineered tumor infiltrating lymphocytes for the treatment of solid tumors. [Read More](#)

Two Research Programs Merged Into New Cancer Biology Program

VCU Massey Cancer Center



VCU Massey Cancer Center has merged two of its existing research programs into the newly established Cancer Biology program. The former Cancer Cell Signaling and Cancer Molecular Genetics research programs have been consolidated into one new program, which will be led by **Azeddine Atfi, PhD**. [Read More](#)

Partnership With American Cancer Society to Address Breast Cancer Disparities

UPMC Hillman Cancer Center



The University of Pittsburgh Medical Center (UPMC) is one of just 21 hospital systems in the country and the only system in Pennsylvania selected to work with the American Cancer Society on a community program to promote health equity and equal access to cancer screenings and education with a specific focus on breast cancer. The UPMC team is led by **Steven Evans, MD**. [Read More](#)

Process Accelerated for Delivering New Therapeutics

Huntsman Cancer Institute, University of Utah

A new initiative aims to speed the process of bringing lifesaving medical discoveries made in University of Utah laboratories to new drugs and therapies for patients. The university's Huntsman Cancer Institute, College of Pharmacy, and the Partners for Innovation, Ventures, Outreach & Technology Center have partnered to establish the University of Utah Therapeutics Accelerator Hub. [Read More](#)

National Effort to Hasten Treatments for Pancreatic Cancer Enrolling Patients at UF Health

University of Florida Health Cancer Center

A novel clinical trial platform that aims to accelerate treatment discoveries for people battling pancreatic cancer is now enrolling patients at 15 sites nationwide, including the University of Florida Health Cancer Center. An initiative of the national nonprofit organization Pancreatic Cancer Action Network, or PanCAN, Precision PromiseSM began development in 2016. [Read More](#)

Rini to Lead Study of COVID-19 in Cancer Patients

Vanderbilt-Ingram Cancer Center



Brian Rini, MD, is leading a study launched by the National Cancer Institute that will closely monitor cancer patients who acquire COVID-19 with the goal of providing highly detailed data to guide future care. [Read More](#)

Researchers Study How the Immune System Responds to COVID-19

Case Comprehensive Cancer Center

New research funded by the National Cancer Institute (NCI) aims to boost understanding of how the immune system responds to COVID-19, from the start of infection to recovery. Two projects totaling over \$2.6 million are led by Case Western Reserve University and Cleveland Clinic researchers as part of the NCI's Serological Sciences Network, which awarded just 13 grants nationally. [Read More](#)

Total Deaths Recorded During the Pandemic Far Exceed Those Attributed to COVID-19

VCU Massey Cancer Center



For every two deaths attributed to COVID-19 in the U.S., a third American dies as a result of the pandemic, according to study findings from **Steven Woolf, MD, MPH**, member of the Cancer Prevention and Control research program at VCU Massey Cancer Center. [Read More](#)

JOB OPPORTUNITIES

Program Co-Leader, Cancer Biology

VCU Massey Cancer Center

Director, Research Administration and Operations

Regulatory Affairs Associate - Vaccine and Infectious Disease Division

Fred Hutchinson Cancer Research Center

Associate Director, Research Administration

Albert Einstein Cancer Center, Albert Einstein College of Medicine

Deputy Director

VCU Massey Cancer Center

Director, GW Cancer Center

GW Cancer Center

Research Associate

UNC Lineberger Comprehensive Cancer Center, University of North Carolina at Chapel Hill

Clinical Research Manager

University of Cincinnati Cancer Center

Faculty Position, Dissemination and Implementation Science

Fred Hutchinson Cancer Research Center

Senior Program Coordinator for Training & Research Services

UCI Chao Family Comprehensive Cancer Center

AACI MEETINGS AND EVENTS



13th Annual AACI CRI Meeting

SAVE THE DATE

July 13-15, 2021



2021 AACI/CCAF Annual Meeting

SAVE THE DATE

October 17-19, 2021

FOLLOW US

