

Some email communications may be filtered to your Spam or Junk folder, even if you have subscribed to them. Please mark [aaciupdate@aaci-cancer.ccsend.com](mailto:aaciupdate@aaci-cancer.ccsend.com) as a Safe Sender to ensure that AACI emails are delivered to your inbox.

## News From the Association of American Cancer Institutes | February 2020

[Click here](#) to read the full newsletter on our website.



[Awards & Honors](#) | [Grants & Gifts](#) | [Leadership Transitions](#) | [Research Highlights](#) | [Other News](#)

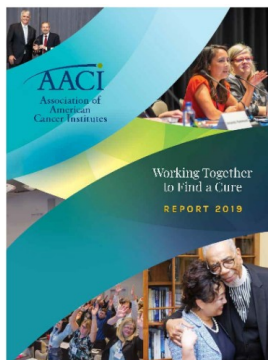
### AACI HEADLINES

#### [Lynch is New President, Director at Fred Hutch](#)



Fred Hutchinson Cancer Research Center has announced that **Thomas J. Lynch Jr., MD**, is the center's new president and director. Dr. Lynch, a well-known cancer leader with expertise in solid tumor research, precision medicine, and immuno-oncology, joined Fred Hutch February 1. Dr. Lynch was most recently chief scientific officer at Bristol-Myers Squibb and has served as chairman and CEO of Massachusetts General Physicians Organization and director of Yale Cancer Center, among other leadership positions. [Read More](#)

#### [Programs, Patient Voices Highlighted in 2019 Report](#)



In 2019 AACI grew its membership, awarded patient advocate scholarships for its annual **Hill Day**, hosted its first **CAR T therapy** symposium, and increased the publication frequency of the **Update** newsletter and **Commentary** editorial series. AACI also provided opportunities throughout the year for patient advocates to share their inspiring stories. AACI recaps these achievements and more in its **2019 Report**. [Read More](#)

#### [Register for the 2020 AACI/AACR Hill Day](#)

**Registration** is now open for the AACI/AACR Hill Day on **Wednesday, May 13** in Washington, DC. Hill Day will bring cancer center directors, researchers, physician-scientists, cancer survivors, and other advocates to Capitol Hill to build support for a strong federal investment in biomedical research—and cancer research in particular—through the National Institutes of Health (NIH) and the National Cancer Institute (NCI). AACI is encouraging its U.S. members to send at least one



representative to Washington to advocate on your center's behalf. [Read More](#)

## [JAMA Letter: Disclose and Manage Conflicts of Interest at Cancer Centers](#)

---

Last month the *Journal of the American Medical Association (JAMA)* published a [letter to the editor](#) authored by AACI President **Roy A. Jensen, MD**, and AACI Conflict of Interest (COI) Task Force Co-chairs **Karen E. Knudsen, MBA, PhD**, and **Leonidas C. Platanias, MD, PhD**, in response to a *JAMA* article published in August regarding industry payments to physician directors of NCI-Designated Cancer Centers. [Read More](#)

## [Abstract Submissions Now Open: 12th Annual AACI CRI Meeting](#)

---



The AACI [Clinical Research Innovation \(CRI\)](#) Steering Committee is currently soliciting [abstracts](#) for the [12th Annual AACI CRI Meeting](#), which will be held July 7-9 in Chicago. This year's meeting will focus on the future of cancer clinical research. The purpose of the abstracts is to inform meeting attendees about clinical trials office challenges and solutions implemented at AACI cancer centers. [Read More](#)

## [PCLI Welcomes New Members to Steering Committee](#)

---

Six new members have been selected to join AACI's [Physician Clinical Leadership Initiative \(PCLI\)](#) Steering Committee: **Steven R. Alberts, MD**, Mayo Clinic Cancer Center; **Julie Brahmer, MD**, Sidney Kimmel Comprehensive Cancer Center at Johns Hopkins University; **Lisa Carey, MD, FASCO**, UNC Lineberger Comprehensive Cancer Center, University of North Carolina at Chapel Hill; **Merry Jennifer Markham, MD, FACP**, University of Florida Health Cancer Center; **Jessica Rhee, MD, MS**, University of Hawai'i Cancer Center, University of Hawai'i at Mānoa; and **John Sweetenham, MD, FRCP, FACP, FASCO**, Simmons Comprehensive Cancer Center, UT Southwestern Medical Center. [Read More](#)

## [Tobacco 21 Now Federal Law](#)

---



On December 20, 2019, President Donald Trump signed a federal budget bill for Fiscal Year 2020. The spending package included passage of Tobacco 21, which raises the legal age for purchasing tobacco products from 18 to 21. The bill marks a major victory for the cancer advocacy community. However, there are still opportunities to strengthen enforcement on a local, state, and national level. [Read More](#)

## [Register Today for AACI's Next PCLI Webinar](#)

---

The AACI [Physician Clinical Leadership Initiative \(PCLI\)](#) will host "[Maintaining a Clinical Research Practice at an Academic Cancer Center](#)" at 2:00 pm eastern time on **Wednesday, March 4**. PCLI Steering Committee Chair **Claire Verschraegen, MS, MD, FACP**, will



present the webinar. Dr. Verschraegen (pictured) is director and professor, Division of Medical Oncology, at The Ohio State University Comprehensive Cancer Center, James Cancer Hospital & Solove Research Institute. [Read More](#)

## NEWS FROM THE CENTERS

### AWARDS & HONORS

#### Plimack Elected to Board of American Society of Clinical Oncology

Fox Chase Cancer Center, Temple Health



**Elizabeth Plimack, MD, MS**, professor and chief of the Division of Genitourinary Medical Oncology at Fox Chase Cancer Center, has been elected to the American Society of Clinical Oncology Board of Directors for a term of four years. She will begin her appointment in June 2020 and is eager to represent Fox Chase as she works to encourage collaboration and methods of sharing information in oncology. [Read More](#)

#### A Menu of Glioblastoma Treatments

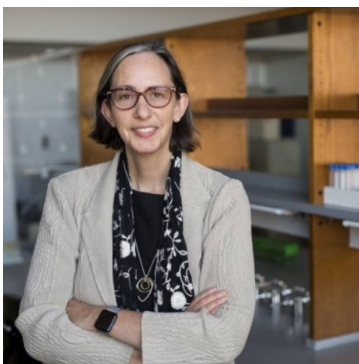
University of New Mexico Comprehensive Cancer Center



**Sara Piccirillo, PhD**, has received the 2019 Gianni Bonadonna prize for new drug development, which she will use to fund her research on glioblastoma treatment. Dr. Piccirillo thinks the way to fight glioblastoma lies in its extreme heterogeneity. Her research will focus on creating a catalog of cellular alterations and then using that catalog to suggest a menu of treatments. [Read More](#)

#### Rathmell Receives Schonfeld Award

Vanderbilt-Ingram Cancer Center



The Kidney Cancer Association is recognizing the research accomplishments and leadership achievements of **W. Kimryn Rathmell, MD, PhD**, with its top honor, the Eugene P. Schonfeld Award. The Schonfeld Award recognizes highly respected health care professionals who have made significant contributions in the treatment of renal cell carcinoma. [Read More](#)

## \$18 Million Gift to Expand Integrative Cancer Care

UCLA Jonsson Comprehensive Cancer Center

---

## Grant Awarded to Study Links Between Tobacco Retailers and Smoke Exposure in Pregnant Women and Children

VCU Massey Cancer Center

---

## Grant Advances Ovarian Cancer Early Detection Efforts

The University of Kansas Cancer Center

---

### LEADERSHIP TRANSITIONS

## Director Steps Down, Interim Leader Appointed

Hollings Cancer Center, Medical University of South Carolina

---



**Gustavo Leone, PhD**, director of the MUSC Hollings Cancer Center, has announced that he has accepted a position as director of the Medical College of Wisconsin Cancer Center. He will work with the interim director, **Denis C. Guttridge, PhD**, to ensure a smooth transition. Dr. Leone plans to leave the university on April 15. [Read More](#)

## Eckert Named Deputy Director

University of Maryland Marlene and Stewart Greenebaum Comprehensive Cancer Center

---



**Richard L. Eckert, PhD**, has been named deputy director of the University of Maryland Marlene and Stewart Greenebaum Comprehensive Cancer Center (UMGCCC). Dr. Eckert, a preeminent scientist and investigator with continuous funding from the National Institutes of Health, has served as the UMGCCC associate director for basic sciences since 2013. [Read More](#)

## Milligan Named HCI Cancer Hospital Executive Director

Huntsman Cancer Institute, University of Utah

---



Huntsman Cancer Institute (HCI) and University of Utah (U of U) Health Hospitals and Clinics have announced that **Don Milligan, MBA**, will serve as the new executive director of the HCI Cancer Hospital. Milligan has more than 25 years of management experience in health care, 22 of which have been in leadership roles at U of U Health and HCI. [Read More](#)

## MSK Appoints Chief Marketing and Communications Officer

Memorial Sloan Kettering Cancer Center

---



Memorial Sloan Kettering Cancer Center (MSK) has appointed **Roxanne Taylor** as chief marketing and communications officer, effective February 3. Taylor will be responsible for shaping and enhancing the MSK brand and will be accountable for building the long-term equity of the brand with all stakeholders. [Read More](#)

## Khabele Named Head of Obstetrics and Gynecology

**Siteman Cancer Center**

---



Gynecologic oncologist **Dineo Khabele, MD**, noted for her expertise in ovarian cancer research and treatment, has been named head of the Department of Obstetrics & Gynecology at Washington University School of Medicine and Siteman Cancer Center. Dr. Khabele, whose appointment becomes effective June 1, also will be installed as the Mitchell and Elaine Yanow Professor of Obstetrics & Gynecology. [Read More](#)

## Cancer Population Sciences Associate Director Announced

**Case Comprehensive Cancer Center**

---

The Case Comprehensive Cancer Center welcomes **Jennifer Cullen, PhD, MPH**, as its new associate director for cancer population sciences, following an extensive search after the departure of Li Li, MD, PhD in January 2019. Dr. Cullen joins Case from the U.S. Department of Defense Center for Prostate Disease Research. [Read More](#)

## Gergis to Lead BMT and Cell-Based Therapy Program

**Sidney Kimmel Cancer Center at Jefferson Health**

---



The Sidney Kimmel Cancer Center at Jefferson Health welcomes **Usama Gergis, MD, MBA**, as director of the Bone Marrow Transplant and Immune Cellular Therapy Program. His areas of expertise include high-risk myeloid malignancies, graft-versus-host disease, and hematopoietic stem cell transplantation for patients who lack matched donors (alternative donor transplantation). [Read More](#)

## New Associate Director of Community Outreach and Engagement Announced

**University of Maryland Marlene and Stewart Greenebaum Comprehensive Cancer Center**

---

The University of Maryland Marlene and Stewart Greenebaum Comprehensive Cancer Center announces the appointment of **Cheryl L. Knott, PhD**, as associate director of community outreach and engagement. Dr. Knott has more than 20 years of experience in community-based cancer control research, with a strong focus on eliminating cancer disparities. [Read More](#)

## New Associate Directors Tapped for Data, Population Sciences

**University of Michigan Rogel Cancer Center**

---

The University of Michigan Rogel Cancer Center has named two new associate directors. **Bhramar**

**Mukherjee, PhD**, will be the associate director for quantitative data sciences, and **Christopher Friese, PhD, RN**, was named associate director for cancer control and population sciences. [Read More](#)

## Director of Finance Named

**Duke Cancer Institute, Duke University Medical Center**



**Steven Bender, MBA, FHFMA**, formerly senior director of finance for Florida Atlantic University College of Medicine in Boca Raton, has been named director of finance of Duke Cancer Institute (DCI). Bender assumed his new role January 6. He serves as the architect of financial reports and models, which support DCI as a blended school of medicine and health system operation. [Read More](#)

## CEO Named for Immunotherapy Contract Research Organization

**Moffitt Cancer Center**



**Krystyna Kowalczyk** has joined Moffitt Cancer Center as the chief executive officer of the institution's new contract research organization with a focus on immunotherapy. The wholly-owned, for-profit subsidiary, first announced in October 2019, will offer end-to-end services for pharmaceutical and biotech companies seeking to advance their immuno-oncology product or device. [Read More](#)

### RESEARCH HIGHLIGHTS

#### FDA Approves New Drug for Advanced Bladder Cancer

**Yale Cancer Center, Yale School of Medicine**

#### Findings Strengthen Link Between Vitamin E Acetate and Vaping-Associated Lung Injuries

**The Ohio State University Comprehensive Cancer Center, James Cancer Hospital & Solove Research Institute**

#### Research Team Helps Explain How Chronic Stress Weakens Immunity Against Cancer

**Roswell Park Comprehensive Cancer Center**

#### Nanoparticles Deliver 'Suicide Gene' Therapy to Pediatric Brain Tumors Growing in Mice

**Sidney Kimmel Comprehensive Cancer Center at Johns Hopkins University**

#### Proton Therapy as Effective as Standard Radiation With Fewer Side Effects

**Siteman Cancer Center**

#### Researchers Identify Molecular Characteristics of Leptomeningeal Melanoma Metastases

**Moffitt Cancer Center**

#### Body Temperature May Provide Early Warning for Graft-Versus-Host Disease

**University of Michigan Rogel Cancer Center**

## **New Drug Prevents Liver Damage, Obesity, and Glucose Intolerance in Mice on High-Fat Diet**

**Georgetown Lombardi Comprehensive Cancer Center**

---

## **MEAL Study: Eating More Produce Will Not Cure, Stop Prostate Cancer**

**Roswell Park Comprehensive Cancer Center**

---

## **Clinical Trial Offerings Expanded for Patients With High-Risk Cutaneous Squamous Cell Carcinoma**

**GW Cancer Center**

---

## **Protein Inhibitor is Potential Treatment for Common Mutations in Non-Hodgkin Lymphomas**

**The University of Texas MD Anderson Cancer Center**

---

## **Aspirin Appears to Curb Colorectal Cancer Recurrence, Tumor Growth**

**City of Hope Comprehensive Cancer Center**

---

## **Researchers Find 'Switch' That Lets Common, Cancer-Causing Virus Replicate**

**University of Florida Health Cancer Center**

---

## **Study Reveals How a Blood-Clotting Protein and Blood Platelets Promote Immune Evasion, Cancer Progression**

**The Ohio State University Comprehensive Cancer Center, James Cancer Hospital & Solove Research Institute**

---

## **Surgery May Add Months, Years of Survival for Adults With Rare Brain Cancers**

**Sidney Kimmel Comprehensive Cancer Center at Johns Hopkins University**

---

## **B-Cell Enrichment Predictive of Immunotherapy Response in Melanoma, Sarcoma, Kidney Cancer**

**The University Texas MD Anderson Cancer Center**

---

## **Can a Second Dose of CAR T Cells Succeed When the First Fails?**

**Fred Hutchinson Cancer Research Cancer**

---

## **Finding Familiar Pathways in Kidney Cancer**

**Sidney Kimmel Cancer Center at Jefferson Health**

---

## **Juul Delivers Substantially More Nicotine than Previous Generation E-Cigs, Cigarettes**

**UCSF Helen Diller Family Comprehensive Cancer Center**

---

## **Discovery Could Lead to New Breast Cancer Drugs**

**University of New Mexico Comprehensive Cancer Center**

---

## **Gut Bacteria May Be One Culprit for Increase of Colorectal Cancer in Younger People**

**Georgetown Lombardi Comprehensive Cancer Center**

---

## **National Clinical Trial Provides Mastectomy Alternative for Recurrent Breast Cancer**

**VCU Massey Cancer Center**

---

## **In Childhood Cancer, Private Insurance Means Better Survival**

**UCSF Helen Diller Family Comprehensive Cancer Center**

---

## **Study Finds Men Have Higher Mortality Rate After Breast Cancer Diagnosis**

## OTHER NEWS

### Cancer Research Booms, Cancer Mortality Declines, NCI Director Says Stanford Cancer Institute



In a speech at Stanford University, National Cancer Institute Director **Norman Sharpless, MD**, reported promising cancer mortality trends and described an encouraging landscape for research funding and drug approval. Dr. Sharpless and **Steven Artandi, MD, PhD**, director of the Stanford Cancer Institute, are pictured. [Read More](#)

### Center for Community Engagement and Health Equity Launched Yale Cancer Center, Yale School of Medicine

Yale Cancer Center (YCC) has launched the Center for Community Engagement and Health Equity. Building on YCC's longstanding commitment to high-quality, expert, and patient-centered cancer care, screening, and prevention across the state of Connecticut, the new center is dedicated to ensuring cancer health equity and improving outcomes with an emphasis on traditionally underserved neighborhoods. [Read More](#)

### Junior Investigators Win Awards for Pilot Projects Fox Chase Cancer Center, Temple Health

Fox Chase Cancer Center has announced the results of its Pilot Project Competition for Junior Investigators, which was held last fall. The competition is funded through an American Cancer Society Institutional Research Grant. [Read More](#)

## JOB OPPORTUNITIES

### Program Coordinator - National Clinical Trials Network (NCTN) Samuel Oschin Comprehensive Cancer Institute, Cedars-Sinai Medical Center

### Assistant Director for Regulatory Affairs

Herbert Irving Comprehensive Cancer Institute, Columbia University Irving Medical Center

### Clinical Research Manager

UNC Lineberger Comprehensive Cancer Center, University of North Carolina at Chapel Hill

### Program Leader, Cancer Prevention and Control University of Colorado Cancer Center

### Clinical Data Analyst II

University of Florida Health Cancer Center

## 2020 AACI MEETINGS AND EVENTS



### AACI/AACR Hill Day

May 13, 2020

Washington, DC





## 12th Annual AACI CRI Meeting

July 7-9, 2020

Chicago

---



## 2020 AACI/CCAF Annual Meeting

October 11-13, 2020

Kansas City

---

### MEMBER MEETING ANNOUNCEMENTS

## ASCO<sup>®</sup> Research Community Forum

### Webinar Series: FDA Audit Readiness for Research Sites

Part 1: February 13, 2020

Part 2: March 10, 2020

---

[Learn More](#)



### 4th Annual Cancer Disparities Symposium: Cultivating Science and Community Engagement to Address Cancer Health Disparities

March 6, 2020

Cleveland, OH

---

[Learn More](#)



### Transdisciplinary Cancer Interception: Leveraging Biology to Improve Prevention and Detection

March 9-11, 2020

Salt Lake City, UT

---

[Learn More](#)



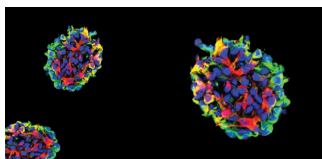
### Immunotherapy of Cancer: CAR T Cell to Checkpoint Inhibitors

March 18-21, 2020

Las Vegas, NV

---

[Learn More](#)



### Cancer Stem Cell Conference 2020

August 4-6, 2020

Cleveland, OH

---

[Learn More](#)

---



Medical Arts Building  
3708 Fifth Avenue, Suite 503  
Pittsburgh, PA 15213  
412-647-6111

FOLLOW US



Copyright 2020 | Association of American Cancer Institutes