

Some email communications may be filtered to your Spam or Junk folder, even if you have subscribed to them. Please mark aaciupdate@aaci-cancer.ccsend.com as a Safe Sender to ensure that AACI emails are delivered to your inbox.

News From the Association of American Cancer Institutes | March 2020

[Click here](#) to read the full newsletter on our website.



[Awards & Honors](#) | [Grants & Gifts](#) | [Leadership Transitions](#) | [Research Highlights](#) | [Other News](#)

AACI HEADLINES

[CRI Meeting Registration Now Open](#)



Registration is open for the **12th Annual AACI Clinical Research Innovation (CRI) Meeting**, July 7-9, at Loews Chicago O'Hare Hotel in Rosemont, Illinois. The program will provide networking opportunities for AACI members, expanded poster sessions, and panel discussions with content experts. This year's meeting theme is "Cancer Clinical Research: Focus on the Future." AACI is accepting **abstracts** for the meeting through 5:00 pm Pacific time on **Monday, March 16**. [Read More](#)

[Support the 12th Annual AACI CRI Meeting With a Program Ad](#)

AACI invites you to promote your cancer center by **purchasing an ad** in the 12th Annual AACI CRI Meeting program. The event program book offers an excellent opportunity to showcase your center while supporting the CRI meeting. Your cancer center's program ad may highlight a conference or a new initiative, or celebrate the success of the center's clinical trials office. Artwork is due **Friday, May 22**. [Read More](#)

[AACI Invites Candidates to Pledge Support of Policy Priorities](#)

AACI recently called upon presidential candidates to pledge their support of five policy priorities for our nation's cancer centers: **funding lifesaving research**; **eliminating HPV-related cancers**; **implementing evidence-based tobacco control and vaping policies**; **achieving oral chemotherapy parity**; and **addressing cancer disparities**. Published responses are current as of February 28, 2020. To keep its members informed, AACI will continue publishing the candidates' responses as they are received. [Read More](#)

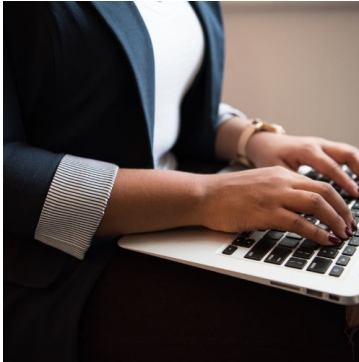
[Nominate a Patient Advocate for a Hill Day Scholarship](#)

AACI and the American Association for Cancer Research (AACR) will co-host the **2020 Hill Day** in Washington, DC, on **Wednesday, May 13**. For the second year, AACI will offer scholarships to patient advocates to help defray the costs of airfare, lodging, meals, and ground transportation. AACI cancer centers may nominate one patient advocate to receive a full



scholarship. Up to five recipients will be selected by AACI's Government Relations Steering Committee. To nominate a patient advocate, please complete our [application form](#) by **Monday, March 23**. [Read More](#)

[Write Your Representatives to Support NIH, NCI Budget Increases](#)



As part of its ongoing efforts to advocate for stable, predictable funding increases for the National Institutes of Health (NIH) and the National Cancer Institute (NCI), AACI has prepared a [customizable letter](#) for members to share with their representatives. AACI encourages you to write on behalf of your cancer center to request that legislators make cancer research funding a priority in Fiscal Year 2021. The association is requesting that appropriators provide at least \$44.7 billion for the NIH and \$6.9 billion for the NCI in a Fiscal Year 2021 spending package. [Read More](#)

[AACI Retires Member Portal](#)

Effective immediately, AACI is retiring its member portal. Initially conceived of in 2012 as the presidential initiative of **William S. Dalton, PhD, MD**, the portal served as a valuable resource for members to register for AACI meetings and to access presentations and surveys. Members can still access these materials through listservs and other platforms. As new technologies have emerged, AACI has migrated its event registration to Cvent, which allows users to access presentations indefinitely via web and mobile app. The AACI CRI listserv also gives members a platform to ask questions and share best practices. [Read More](#)

AACI WEBINAR

[Reminder: Join AACI for a PCLI Webinar on March 4](#)

The AACI [Physician Clinical Leadership Initiative](#) (PCLI) will host "[Maintaining a Clinical Research Practice at an Academic Cancer Center](#)" at 2:00 pm eastern time on **Wednesday, March 4**. PCLI Steering Committee Chair **Claire Verschraegen, MS, MD, FACP**, will present the webinar. Dr. Verschraegen is director and professor, Division of Medical Oncology, at The Ohio State University Comprehensive Cancer Center, James Cancer Hospital & Solove Research Institute.

[Register Today](#)

NEWS FROM THE CENTERS

AWARDS & HONORS

[Carlson Named Chair of NCCN Government Affairs Committee](#)

[The Ohio State Comprehensive Cancer Center, James Cancer Hospital & Solove Research Institute](#)

Jennifer Carlson, associate vice president for external relations and advocacy at OSUCCC – James, has been named the first chair of the National Comprehensive Cancer Network® (NCCN®)'s Government Affairs Committee. The appointment became effective in late 2019. [Read More](#)



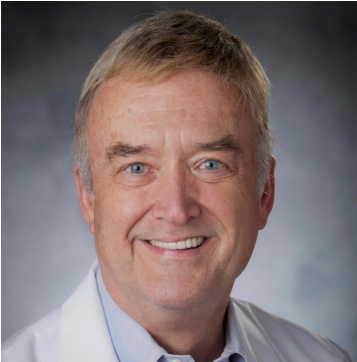
Fox Chase Earns Accreditation From ANCC

Fox Chase Cancer Center, Temple Health

Fox Chase Cancer Center's Nurse Residency Program has achieved Practice Transition Accreditation from the American Nurses Credentialing Center (ANCC). They were awarded Accreditation With Distinction, the highest recognition awarded. Nurses in accredited transition programs such as Fox Chase's Nurse Residency Program experience curricula that promote the acquisition of knowledge, skills, and professional behaviors necessary to deliver safe, high-quality care. [Read More](#)

Sullivan Receives ASTCT Lifetime Achievement Award

Duke Cancer Institute, Duke University Medical Center



Keith Sullivan, MD, has been named the 2020 recipient of the American Society for Transplantation and Cellular Therapy Lifetime Achievement Award. Sullivan helped establish the ASTCT (then known as ASBMT). For the past 20 plus years, Sullivan has also been working on how stem cell transplants can improve autoimmune diseases — specifically, scleroderma. [Read More](#)

Head and Neck Cancer Chair Honored With Distinguished Alumnus Award

Roswell Park Comprehensive Cancer Center



Recognized for his contributions to patient care, Roswell Park Comprehensive Cancer Center's **Wesley Hicks, Jr., MD, FACS**, has earned a Distinguished Alumnus Award from Weill Cornell Medical Center. Chair of the Department of Head & Neck/Plastic & Reconstructive Surgery at the Buffalo cancer center, Dr. Hicks is only the third alumnus to receive this award from Weill Cornell. [Read More](#)

Quality Oncology Practice Initiative Certification Earned

Fox Chase Cancer Center, Temple Health

Fox Chase Cancer Center has been recognized by the QOPI Certification Program LLC as successfully completing a three-year certification for oncology practices that meet nationally recognized standards for quality and safety in cancer care. The QOPI program, a wholly owned subsidiary of the American Society of Clinical Oncology (ASCO), builds on ASCO's Quality Oncology Practice Initiative. [Read More](#)

Wandinger-Ness Wins AAAS Lifetime Mentor Award

University of New Mexico Comprehensive Cancer Center

Angela Wandinger-Ness, PhD, was honored by the American



Association for the Advancement of Science (AAAS) with its 2020 Lifetime Mentor Award. She was recognized for mentoring some 270 scientists over her 29-year teaching career. Wandinger-Ness is the associate director for education, training and mentoring at the UNM Comprehensive Cancer Center. [Read More](#)

GRANTS & GIFTS

UCSF to Co-lead Rare Cancers Initiative

[UCSF Helen Diller Comprehensive Cancer Center](#)

\$9.1 Million Grant to Focus on 'Cross-Talk' Between Liver and Cancer Cells That Prompts Liver Metastasis

[Samuel Oschin Comprehensive Cancer Institute, Cedars-Sinai Medical Center](#)

\$3.3 Million Grant to Study How Immunotherapy Impacts Patients' Ability to Fight Off Bugs

[Fred Hutchinson Cancer Research Center](#)

Researchers Receive \$3 Million to Investigate Cell Functions Within Bone Marrow

[Indiana University Melvin and Bren Simon Cancer Center](#)

\$1.6 Million Awarded to Improve Current Treatments for Cancers in Plasma and White Blood Cells

[VCU Massey Cancer Center](#)

LEADERSHIP TRANSITIONS

Kunz Named Leader of Gastrointestinal Cancers Program

[Yale Cancer Center, Yale School of Medicine](#)



Pamela L. Kunz, MD, has been appointed leader of the Gastrointestinal Cancers Program at Smilow Cancer Hospital at Yale New Haven and Yale Cancer Center and director of GI Medical Oncology within the Section of Medical Oncology. Dr. Kunz joins Yale from Stanford University School of Medicine where she is currently director of the Stanford Neuroendocrine Tumor Program. [Read More](#)

Alyea Named Chief Medical Officer

[Duke Cancer Institute, Duke University Medical Center](#)

Medical oncologist **Edwin P. Alyea, III, MD**, has been named chief medical officer for Duke Cancer Institute. He will also serve as professor of medicine in the Department of Medicine, Division of Hematologic Malignancies and Cellular Therapy. In addition, Dr. Alyea will operate a clinical practice with the Adult Blood and Marrow Transplant Program. He joined Duke on January 1. [Read More](#)



Cupertino to Lead Community Engagement and Disparities Research

Wilmot Cancer Institute, UR Medicine



Paula Cupertino, PhD, joins the University of Rochester Medical Center as Professor of Public Health Sciences and Oncology and as Wilmot Cancer Institute's associate director of community outreach, engagement and disparities. Her appointment is pending approval by the University's Board of Trustees. Cupertino begins her tenure in Rochester in March. [Read More](#)

Hooper Selected as Deputy Director of the NMHD

Case Comprehensive Cancer Center



Monica Webb Hooper, PhD, will become deputy director of the National Institute on Minority Health and Health Disparities (NIMHD), one of the 27 institutes of the National Institutes of Health, in March. She was previously associate director for cancer disparities research and director of the Office of Cancer Disparities Research at Case Comprehensive Cancer Center. [Read More](#)

Forman Steps Down, Smith Appointed as New Chair

City of Hope Comprehensive Cancer Center

After more than 30 years as chair of City of Hope's Department of Hematology & Hematopoietic Cell Transplantation, **Stephen J. Forman, MD**, will transition out of this role but continue as director of the Hematologic Malignancies Research Institute and director of the T Cell Therapeutics Research Laboratory. **Eileen Smith, MD**, medical director of City of Hope's Alpha Stem Cell Clinic, has been appointed chair of the Department of Hematology & Hematopoietic Cell Transplantation. [Read More](#)

RESEARCH HIGHLIGHTS

Cold Plasma Patch Could Make Immunotherapy More Effective for Treating Melanoma

UCLA Jonsson Comprehensive Cancer Center

Brain Tumor Discovery May Unlock New Treatments for Many Cancers

University of Virginia Cancer Center

CD19 CAR NK-Cell Therapy Achieves 73 Percent Response Rate in Leukemia, Lymphoma Patients

[The University of Texas MD Anderson Cancer Center](#)

[New Molecular Mechanism Involved in Cellular Senescence That Modulates Inflammation, Cancer Immunotherapy Response](#)

[The Wistar Institute](#)

[Absent P53, Oral Cancers Recruit and Reprogram Nerves to Fuel Tumor Growth](#)

[The University of Texas MD Anderson Cancer Center](#)

[A Single Number Helps Data Scientists Find Most Dangerous Cancer Cells](#)

[Stanford Cancer Institute](#)

[Combination Drug Therapy for Childhood Brain Tumors Shows Promise in Laboratory Models](#)

[Sidney Kimmel Comprehensive Cancer Center at Johns Hopkins University](#)

[Researchers Say Multiple Drug Adaptive Therapy is Possible](#)

[Moffitt Cancer Center](#)

[Study Sheds Light on Gastric Cancer Development](#)

[Vanderbilt-Ingram Cancer Center](#)

[Antiviral Treatments Lead Researchers to Develop Possible Cancer Drug](#)

[Stanford Cancer Institute](#)

[Brain Tumor Surgery That Pushes Boundaries Boosts Patients' Survival](#)

[UCSF Helen Diller Family Comprehensive Cancer Center](#)

[Breast Cancer Patients With Inherited Genetic Mutation Receive Different Cancer Treatment](#)

[University of Michigan Rogel Cancer Center](#)

[Statins May Lower Mortality in High-Risk Prostate Cancer Patients](#)

[Sidney Kimmel Cancer Center at Jefferson Health](#)

[Researchers Stress Need to Overcome Barriers to Cervical Cancer Screening, Education](#)

[University of Michigan Rogel Cancer Center](#)

[Strong Connection Found Between HPV, Head and Neck Cancers](#)

[LIVESTRONG Cancer Institutes, The University of Texas at Austin, Dell Medical School](#)

[Much Shorter Radiation Treatment Found to Be Safe, Effective For People With Soft Tissue Sarcoma](#)

[UCLA Jonsson Comprehensive Cancer Center](#)

[New Areas in Human Genomes Linked to Skin Cancer Risk Identified](#)

[Indiana University Melvin and Bren Simon Cancer Center](#)

[Internal Clock Could Be Targeted to Prevent or Slow Breast Cancer Progression](#)

[City of Hope Comprehensive Cancer Center](#)

[Genetics May Predict Cancer Patients at Highest Risk of 'Chemo Brain' After Blood, Marrow Transplant](#)

[O'Neal Comprehensive Cancer Center at the University of Alabama at Birmingham](#)

Improving Outcomes for Uveal Melanoma Patients With Liver Metastasis

Sidney Kimmel Cancer Center at Jefferson Health

Nanosize Device 'Uncloaks' Cancer Cells in Mice, Reveals Them to the Immune System

Sidney Kimmel Comprehensive Cancer Center at Johns Hopkins University

Study Shows Three-Year Screening Interval Protective Against Cervical Cancer

University of New Mexico Comprehensive Cancer Center

OTHER NEWS

New Center for Indigenous Cancer Research Has Regional Focus, Global Reach

Roswell Park Comprehensive Cancer Center



The Center for Indigenous Cancer Research at Roswell Park Comprehensive Cancer Center, the first initiative of its kind in the Northeast, is dedicated to reducing the impact of cancer on Indigenous communities regionally, nationally, and internationally. **Rodney Haring, PhD, MSW**, is director. [Read More](#)

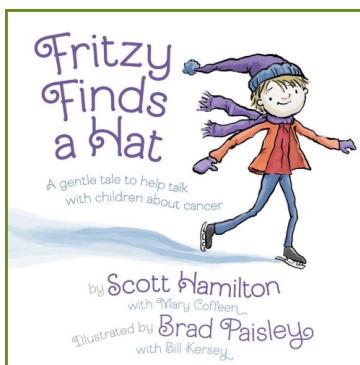
Virginia Residents Asked to Partner in Research to Reduce Cancer Disparities

VCU Massey Cancer Center

Massey Cancer Center is asking local citizens to partner in cancer research designed to identify and address health needs in their own communities. The project, called **Together for Health – Virginia**, is a comprehensive health assessment program designed to better understand how social and behavioral patterns as well as financial and environmental factors impact cancer rates. Information from this research will help to improve health care practices and services within communities. [Read More](#)

Olympic Gold Medalist's Children's Book Helps Parents Talk to Kids About Cancer

Moffitt Cancer Center



A new children's book, *Fritzy Finds a Hat*, written by Olympic Gold Medalist, bestselling author, and cancer survivor **Scott Hamilton**, and illustrated by country music superstar **Brad Paisley**, has been released. The book, which tells the story of a young boy trying to find a hat for his mother who is undergoing cancer treatment, is intended to help parents talk with their children about the disease. [Read More](#)

Pilot Telemedicine Program to Serve Lung Nodule Patients

O'Neal Comprehensive Cancer Center at the University of Alabama at Birmingham

Some lung nodules identified on radiographic studies need specialized follow-up to ensure early detection and treatment of lung cancer. Patients identified with lung nodules will now be able to receive care from University of Alabama at Birmingham physicians via telemedicine. This pilot project, in conjunction with UAB

eMedicine, will treat patients in rural Bibb County communities at Bibb Medical Center to improve access to health care. [Read More](#)

Vanderbilt-Ingram Patient First for New Cell Engineering Platform

Vanderbilt-Ingram Comprehensive Cancer Center



Rhea Dodd is the first patient treated with an experimental cancer vaccine derived from a completely new cell engineering platform. The retired veterinarian, triathlete, and climber traveled from Jackson Hole, Wyoming, to Vanderbilt-Ingram Cancer Center, where she received an infusion of her own immune cells reprogrammed with tumor antigens and designed to elicit an immune response to an HPV-related cancer. [Read More](#)

JOB OPPORTUNITIES

Senior Director, Business Development and Operations

Siteman Cancer Center

Cancer Epidemiologist - Assistant/Associate/Full Professor

Stanford Cancer Institute

Faculty Position - Dissemination and Implementation Science

Fred Hutchinson Cancer Research Center

2020 AACI MEETINGS AND EVENTS



AACI/AACR Hill Day

May 13, 2020

Washington, DC

[Register Today](#)



12th Annual AACI CRI Meeting

July 7-9, 2020

Chicago

[Register Today](#)



2020 AACI/CCAF Annual Meeting

October 11-13, 2020

Kansas City

[Save the Date](#)

MEMBER MEETING ANNOUNCEMENTS

**4th Annual Cancer Disparities Symposium:
Cultivating Science and Community Engagement to
Address Cancer Health Disparities**



March 6, 2020
Cleveland, OH

[Learn More](#)



Transdisciplinary Cancer Interception: Leveraging Biology to Improve Prevention and Detection

March 9-11, 2020
Salt Lake City, UT

[Learn More](#)

ASCO[®] Research
Community Forum

Webinar Series: FDA Audit Readiness for Research Sites

Part 2: March 10, 2020

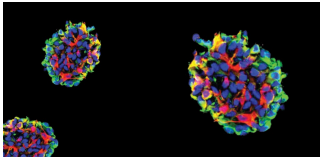
[Learn More](#)



Immunotherapy of Cancer: From CAR T Cells to Checkpoint Inhibitors

March 18-21, 2020
Las Vegas, NV

[Learn More](#)



Cancer Stem Cell Conference 2020

August 4-6, 2020
Cleveland, OH

[Learn More](#)



Medical Arts Building
3708 Fifth Avenue, Suite 503
Pittsburgh, PA 15213
412-647-6111

FOLLOW US



Copyright 2020 | Association of American Cancer Institutes