

Some email communications may be filtered to your Spam or Junk folder, even if you have subscribed to them. Please mark [aaciupdate@aaci-cancer.ccsend.com](mailto:aaciupdate@aaci-cancer.ccsend.com) as a Safe Sender to ensure that AACI emails are delivered to your inbox.

## News From the Association of American Cancer Institutes | May 2020

[Click here](#) to read the full newsletter on our website.



[Awards & Honors](#) | [Grants & Gifts](#) | [Leadership Transitions](#) | [Research Highlights](#) | [Other News](#)

### AACI HEADLINES

#### [Moffitt Appoints Cleveland as New Center Director](#)



**John Cleveland, PhD**, has been named center director and executive vice president of Moffitt Cancer Center, one of 51 National Cancer Institute-Designated Comprehensive Cancer Centers in the country. Dr. Cleveland joined Moffitt in 2014 as associate center director of basic science. He stepped into the interim center director role in December 2019. [Read More](#)

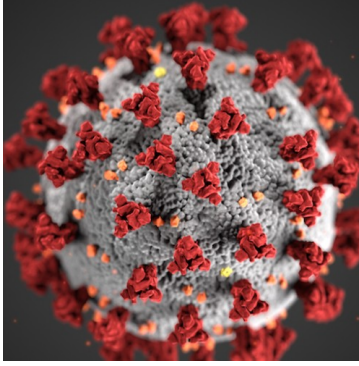
#### [CRI Meeting Moves to Two-Day Virtual Format](#)



Prioritizing the health and safety of meeting attendees, AACI has shifted the **12th Annual AACI CRI Annual Meeting** (July 7-8) from an in-person event to a virtual format. **Registration is now free for AACI cancer center members and sustaining members.** AACI is working to ensure that the online meeting will still deliver the innovative, quality education that its members have enjoyed at prior CRI annual meetings. [Read More](#)

#### [AACI Calls on Congressional Leadership to Prioritize Academic Cancer Centers in COVID-19 Legislation](#)

In an **April 24 letter**, AACI called upon congressional leadership to consider the needs of the cancer center community in any potential fourth COVID-19 supplemental response legislation. Priorities include supplemental appropriations for major research agencies, additional funding for hospitals and health systems, oral chemotherapy parity, requiring insurers to provide a 90-day supply of retail medications,



creating a special enrollment period for HealthCare.gov, increasing funding for state Medicaid programs, and providing assistance for people who have lost employer-sponsored health coverage. [Read More](#)

## Submit Your Cancer Center News for June

Thank you to the communications professionals who consistently provide AACI with news from their cancer centers — especially during the COVID-19 crisis. The June 2020 issue of AACI *Update* will be published on **Monday, June 1**. The deadline to submit your cancer center news is **Wednesday, May 27**. Please send your cancer center news to [aaciupdate@aaci-cancer.org](mailto:aaciupdate@aaci-cancer.org).

[View Our Submission Guidelines](#)

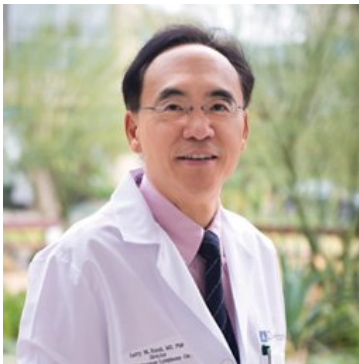
[Submit News](#)

## NEWS FROM THE CENTERS

### AWARDS & HONORS

#### Kwak Recognized by AIMBE

[City of Hope Comprehensive Cancer Center](#)



**Larry Kwak, MD, PhD**, vice president and deputy director of City of Hope Comprehensive Cancer Center, was inducted into the 2020 class of American Institute for Medical and Biological Engineering (AIMBE) Fellows. Dr. Kwak's latest research is on the first CAR T cell therapy targeting the B cell-activating factor receptor on cancerous cells with the goal of using it in patients who have relapsed after CD19 immunotherapy treatments. [Read More](#)

#### Goldberg Honored for Work in GI Cancers

[WVU Cancer Institute](#)



**Richard M. Goldberg, MD**, retired in December 2019 as director of the WVU Cancer Institute. OnLive®, a multimedia resource focused on providing oncology professionals with patient care information, in conjunction with The Ruesch Center for the Cure of Gastrointestinal (GI) Cancers, honored Dr. Goldberg with a 2020 Luminary Award in GI Cancers for his commitment to the GI cancer community. [Read More](#)

#### Chapman Receives Geriatric Oncology Award

[Sidney Kimmel Cancer Center at Jefferson Health](#)

**Andrew Chapman, DO**, is being honored with the 2020 B.J. Kennedy Award for Scientific Excellence in Geriatric Oncology from the American



Society of Clinical Oncology for his leadership and achievement in the field. Dr. Chapman is co-director of the Jefferson Senior Adult Oncology Center and chief of cancer services at Sidney Kimmel Cancer Center at Jefferson Health. [Read More](#)

## Chen Elected as ASCO Fellow

The University of Kansas Cancer Center

---



**Ronald Chen, MD, MPH**, has been named a Fellow of the American Society of Clinical Oncology (FASCO) in honor of his extraordinary volunteer service, dedication, and commitment to ASCO. The distinction of FASCO is given to those who have carried out efforts that benefit ASCO, the specialty of oncology, and the patients they serve. Dr. Chen is a leading genitourinary radiation oncologist and a renowned health services researcher. [Read More](#)

## GRANTS & GIFTS

### \$9 Million Awarded to Study Extracellular RNA in Colorectal Cancer

Vanderbilt-Ingram Cancer Center

---

### \$5.5 Million Grant Received to Study Health Impact of Youth Vaping

The Ohio State University Comprehensive Cancer Center – James Cancer Hospital and Solove Research Institute

---

### \$2.8 Million Grant to Help Develop Blood-Based Test for Liver Transplant Candidate Selection

UCLA Jonsson Comprehensive Cancer Center

---

### \$2.5 Million Supports Pancreatic Cancer Research

Siteman Cancer Center

---

### \$1.4 Million Grant Supports Radiation Oncology, Radiology Residents

Duke Cancer Institute, Duke Medical Center

---

### Seven-Year Prostate Cancer Project Reaches Drug Discovery Phase

Cleveland Clinic Cancer Center

---

### Grant Awarded to Study Physical Aspects of Cancer Cell

University of Florida Health Cancer Center

---

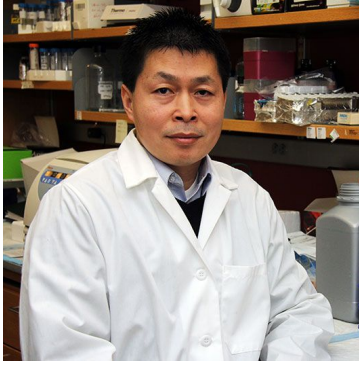
## LEADERSHIP TRANSITIONS

### Wang Named Developmental Therapeutics Program Co-Leader

VCU Massey Cancer Center

---

**Xiang-Yang (Shawn) Wang, PhD**, has been appointed as the co-leader of the developmental therapeutics research program at VCU Massey Cancer Center. He will serve in this role alongside Steven Grant, MD,



who has co-led the program since 2011, and Anthony Faber, PhD, who has co-led the program since 2018. [Read More](#)

## New Surgical Oncology Chief Brings Expertise as Surgeon-Scientist

Wilmot Cancer Institute, UR Medicine

---



**Darren Carpizo, MD, PhD**, has joined UR Medicine as the new chief of surgical oncology, vice-chair of basic/translational research, and co-leader of the Hallmarks of Cancer research program at Wilmot Cancer Institute. An expert in hepatobiliary and pancreatic surgery, Dr. Carpizo served on the faculty at Rutgers Cancer Institute of New Jersey since 2008. [Read More](#)

## Serody, Basch Named to New Leadership Roles

UNC Lineberger Comprehensive Cancer Center, University of North Carolina at Chapel Hill

---

In a realignment of the division of hematology and oncology that will form two divisions from one, **Jonathan Serody, MD**, has been appointed chief of hematology, and **Ethan Basch, MD**, chief of oncology. **Melba Ribeiro, MPH**, will serve both divisions as associate chief for administration. [Read More](#)

## Poynter, Harki Tapped for Leadership Roles

Masonic Cancer Center, University of Minnesota

---



**Jenny Poynter, MPH, PhD**, and **Daniel Harki, PhD**, have been appointed to the leadership team of Masonic Cancer Center. Dr. Poynter will serve as the cancer center's first associate director for community outreach and engagement. Dr. Harki will become a co-leader of the center's Cellular Mechanisms Program. [Read More](#)

## Diehl Appointed Deputy Director, COO

Case Comprehensive Cancer Center

---



**J. Alan Diehl** has been appointed deputy director and chief operating officer of the Case Comprehensive Cancer Center, a collaboration of Case Western Reserve University, Cleveland Clinic, and University Hospitals. This newly created role will provide substantive oversight of the cancer center to pursue its mission to advance cancer research, training, community outreach, and local and national impact. [Read More](#)

## Brain Tumor Researcher to Lead Efforts to Move Research Discoveries to Patients

University of Florida Health Cancer Center

---



A leading expert in the search for ways to treat aggressive adult and pediatric brain tumors, **Duane A. Mitchell, MD, PhD**, will direct the University of Florida's efforts to speed research discoveries to improve health, as well as UF's expanded Clinical and Translational Science Award partnership with Florida State University. [Read More](#)

## Enterprise Director of Breast Oncology Welcomed

Sidney Kimmel Cancer Center at Jefferson Health

---



Breast surgeon **Kristin L. Brill, MD**, has joined Sidney Kimmel Cancer Center at Jefferson Health as enterprise director of breast oncology. Dr. Brill joins SKCC from Cooper University Health Care, in New Jersey, where she was head of the Division of Breast Surgery and director of the Janet Knowles Breast Cancer Center at MD Anderson Cancer Center at Cooper. [Read More](#)

### RESEARCH HIGHLIGHTS

#### Cancerous Tumors, Surrounding Cells Illuminated by New Imaging Agent

Siteman Cancer Center

---

#### Researcher Leads Clinical Trials on COVID-19 Investigational Drug Therapy

VCU Massey Cancer Center

---

#### Clinical Trial Examines Potential Treatment for COVID-19

Rutgers Cancer Institute of New Jersey

---

#### Novel Approach Identified to Overcome Drug Resistance in Leukemia

The University of Kansas Cancer Center

---

#### Study Identifies Precision Medicine Therapy for Rare Pediatric Glioma

UCSF Helen Diller Comprehensive Cancer Center

---

#### Chronic Stress Can Impact Response to Radiation Therapy for Cancer

Roswell Park Comprehensive Cancer Center

---

#### Hereditary Prostate Cancer Linked to Family History of Breast, Ovarian Cancer

Duke Cancer Institute, Duke University Medical Center

---

#### Study May Change Treatment Approach for Some Colorectal Cancer Patients

The University of Chicago Medicine Comprehensive Cancer Center

---

#### Physician Leads Changes for Transplant, Cellular Therapy Guidelines

## New Therapy Could Benefit Underserved Patients With Lung, Ovarian Cancer

The University of Texas MD Anderson Cancer Center

---

## Superior Progression-Free Survival Associated With Continuous Targeted Therapy Combination for BRAF-mutated Melanoma

Rutgers Cancer Institute of New Jersey

---

## Cancer Clinicians Tackle COVID-19

The University of Chicago Medicine Comprehensive Cancer Center

---

## CRISPR-Based 'Discovery Engine' for New Cell Therapies to Advance Cancer Treatments

UCSF Helen Diller Family Comprehensive Cancer Center

---

## Immunotherapy Before Surgery Could Advance Care of an Aggressive Form of Skin Cancer

Sidney Kimmel Comprehensive Cancer Center at Johns Hopkins University

---

## Researchers Plan Study for Addressing Sexual Concerns in Breast Cancer Patients

Fox Chase Cancer Center, Temple Health

---

## Scientists Survey CAR T-Cell Therapy Landscape

The University of Kansas Cancer Center

---

## Cancer Outcomes Improved by Examining Patients' Genes

University of Virginia Cancer Center

---

## Chemotherapy Should Be Considered for Patients With Small ERBB2-Positive Breast Cancers

Roswell Park Comprehensive Cancer Center

---

## Study Tracks Genomics of Lung Tumor Behavior

Vanderbilt-Ingram Cancer Center

---

## New York is Only State to Reduce Income-Based Disparities in Smoking, Study Finds

UNC Lineberger Comprehensive Cancer Center, University of North Carolina at Chapel Hill

---

## No Overall Survival Benefit, But Improved Quality of Life Found With Talazoparib in Advanced BRCA-Mutated Breast Cancer

The University of Texas MD Anderson Cancer Center

---

## Researchers Identify Molecular Pathway That Controls Immunosuppression in Tumors

Moffitt Cancer Center

---

### OTHER NEWS

## Experts Offer Advice on Managing Cancer Care During COVID-19 Pandemic

Fox Chase Cancer Center, Temple Health

---

A group of Fox Chase clinicians shared their expertise in an article that advised physicians on the best approach to take with patients who have been diagnosed or are currently under treatment for cancer during the ongoing COVID-19 pandemic. The article was published in the *Annals of Internal Medicine*. [Read More](#)

## 'Smart' Toilet Monitors for Signs of Disease

Stanford Cancer Institute



A disease-detecting "precision health" toilet can sense multiple signs of illness through automated urine and stool analysis, a new Stanford study reports. The toilet is fitted with technology that can detect a range of disease markers in stool and urine, including those of some cancers, such as colorectal or urologic cancers. [Read More](#)

## Study Examines Ways to Improve Cancer Literacy in Kentucky Students

UK Markey Cancer Center

A study led by UK Markey Cancer Center researchers suggests that implementing cancer education curricula in middle and high schools may improve cancer literacy and ultimately help reduce cancer rates. The study included 349 middle and high school students in Kentucky. Students were given a baseline test to determine their cancer literacy, followed by a cancer education presentation and another test. Scores for all individual items increased after the intervention, and the average test scores improved by 30 percent. [Read More](#)

### JOB OPPORTUNITIES

#### Assistant Vice President and Chief of Oncology Nursing Services

Duke Cancer Institute, Duke University Medical Center

#### Senior Scientist, Cancer Lipids and Metabolism Research Program

Stony Brook Cancer Center

#### Clinical Research Manager - Clinical Operations

Cedars-Sinai Cancer

#### Program Manager - Clinical Research Finance

Cedars-Sinai Cancer

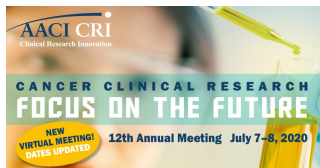
### 2020 AACI MEETINGS AND EVENTS



#### AACI/AACR Hill Day

**POSTPONED**

[Learn More](#)



#### 12th Annual AACI CRI Meeting

**NEW VIRTUAL MEETING! DATES UPDATED**

**July 7-8, 2020**

[Register Today](#)

#### 2020 AACI/CCAF Annual Meeting

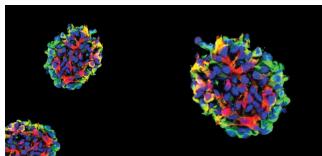
**October 11-13, 2020**

**Kansas City**

[Save the Date](#)



## MEMBER MEETING ANNOUNCEMENTS



### Cancer Stem Cell Conference

**RESCHEDULED**

July 12-14, 2021

Cleveland, OH

[Learn More](#)



Medical Arts Building  
3708 Fifth Avenue, Suite 503  
Pittsburgh, PA 15213  
412-647-6111

FOLLOW US



Copyright 2020 | Association of American Cancer Institutes