

Some email communications may be filtered to your Spam or Junk folder, even if you have subscribed to them. Please mark aaciupdate@aaci-cancer.ccsend.com as a Safe Sender to ensure that AACI emails are delivered to your inbox.

News From the Association of American Cancer Institutes | January 2021

[Click here](#) to read the full newsletter on our website.



[Awards & Honors](#) | [Grants & Gifts](#) | [Leadership Highlights](#) | [Research Highlights](#) | [Other News & COVID-19](#)

AACI HEADLINES

[Odunsi Named Director of the University of Chicago Medicine Comprehensive Cancer Center](#)



Adekunle "Kunle" Odunsi, MD, PhD, FRCOG, FACOG, an expert in immunotherapy and vaccine therapy for cancer, has been appointed director of the University of Chicago Medicine Comprehensive Cancer Center, effective March 1. Dr. Odunsi will also serve as BSD Dean for Oncology and professor of obstetrics and gynecology at the University of Chicago. He joins UChicago from Roswell Park Comprehensive Cancer Center, where he served as deputy director, executive director of the Center for Immunotherapy, and chair of the Department of Gynecologic Oncology. [Read More](#)

[PCLI Welcomes New Steering Committee Members](#)



Three new members have been selected to join AACI's **Physician Clinical Leadership Initiative (PCLI)** Steering Committee: **Carrie B. Lee, MD, MPH**, UNC Lineberger Comprehensive Cancer Center, University of North Carolina at Chapel Hill; **Karen L. Reckamp, MD, MS**, Cedars-Sinai Cancer; and **Julie Ann Sosa, MD, MA, FACS, MAMSE, FSSO**, UCSF Helen Diller Family Comprehensive Cancer Center. The new members' terms began January 1. [Read More](#)

[Call for Abstracts for the 13th Annual AACI CRI Meeting](#)

The AACI CRI Steering Committee is currently soliciting **abstracts** for the 13th Annual AACI CRI Meeting. This year's meeting theme will focus on adapting cancer clinical research for 2021 and beyond. The purpose of the abstracts is to inform meeting attendees about clinical trials office challenges and solutions implemented at AACI cancer centers. The online submission tool will open in February. In the meantime, you may



FY 2021 Budget a Mixed Bag for Cancer Research

Approved by the House and Senate on Monday, December 21, 2020, the final Fiscal Year 2021 budget deal includes a \$1.25 billion increase in funding for the National Institutes of Health (NIH) and a \$119.5 million increase to the National Cancer Institute (NCI). While the additional funding does not meet levels requested by AACI, the association is grateful for the significant additional support approved by legislators on both sides of the aisle. The bill also addresses three of AACI's public policy priorities: the [CLINICAL TREATMENT Act](#), the [Removing Barriers to Colorectal Screening Act](#), and a ban on surprise medical bills. [Read More](#)

Submit Your Cancer Center News for February

Thank you to the communications professionals who consistently provide AACI with news from their cancer centers. The February 2021 issue of *AACI Update* will be published on **Monday, February 1**. The deadline to submit your cancer center news is **Wednesday, January 27**. Please send your cancer center news to aaciupdate@aaci-cancer.org. [Read More](#)

NEWS FROM THE CENTERS

AWARDS & HONORS

Mitchell Elected to Fellowship in Royal College of Physicians of London

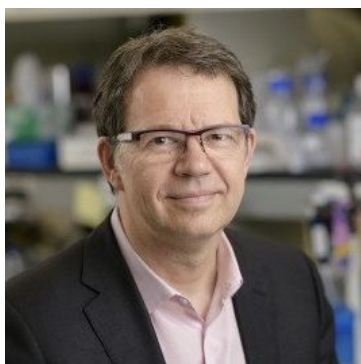
[Sidney Kimmel Cancer Center at Jefferson Health](#)



Edith P. Mitchell, MD, FACP, FCPP, FRCP, associate director for diversity affairs at the Sidney Kimmel Cancer Center at Jefferson Health, has been recognized as a fellow of the Royal College of Physicians of London (RCP). The RCP was founded in 1518 by a royal charter from King Henry VIII. [Read More](#)

Sadelain Receives Fondation ARC Award

[Memorial Sloan Kettering Cancer Center](#)



Michel Sadelain, MD, PhD, director of the Center for Cell Engineering at Memorial Sloan Kettering Cancer Center, was named a recipient of the 49th Fondation ARC Léopold Griffuel Award for Translational and Clinical Research. [Read More](#)

McDonnell Elected to National Academy of Inventors

Duke Cancer Institute, Duke University Medical Center



Donald McDonnell, PhD, has been elected as a fellow to the National Academy of Inventors. Using a combination of genetics, biochemistry, and chemical biology, Dr. McDonnell explores fundamental mechanistic aspects of estrogen receptor signaling in breast cancer. [Read More](#)

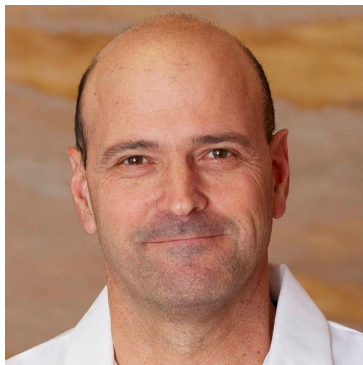
Three Roswell Park Experts Acknowledged as Influential Researchers

Roswell Park Comprehensive Cancer Center

Roswell Park Comprehensive Cancer Center's **Igor Puzanov, MD, MSCI, FACP**, **Andrew Hyland, PhD**, and **Maciej Goniewicz, PhD, PharmD**, have all recently been recognized as global scientific pioneers on the 2020 Clarivate Plc Highly Cited Researchers list. [Read More](#)

Nir Named to New Endowed Professorship

University of New Mexico Comprehensive Cancer Center



Itzhak Nir, MD, has been appointed the first Elsie P. Barry/Cowboys for Cancer Research Endowed Professor in Hepato-Pancreatico-Biliary and Oncology Surgery at UNM Comprehensive Cancer Center. Dr. Nir served as surgical director in transplantation surgery at Hadassah University Hospital in Jerusalem and as a surgical oncology fellow at Memorial Sloan Kettering Cancer Center. [Read More](#)

Wolchok Named ESMO Award Winner

Memorial Sloan Kettering Cancer Center



Jedd Wolchok, MD, PhD, director of the Parker Institute for Cancer Immunotherapy at Memorial Sloan Kettering Cancer Center, is the recipient of the European Society for Medical Oncology (ESMO) Award for Immuno-Oncology 2020. [Read More](#)

Facilities Manager Recognized for Leadership

University of New Mexico Comprehensive Cancer Center

Stewart Livsie, manager of maintenance and construction at UNM Comprehensive Cancer Center, was recently named by the International Facility Management Association as one of its top 40 facilities managers under 40 years old for 2020. His leadership helped ensure that the center remained open during the pandemic. [Read More](#)



GRANTS & GIFTS

UPMC Hillman Rated Exceptional by NCI

[UPMC Hillman Cancer Center](#)

\$25 Million Gift Received for Cancer Immunology and Metabolism Center of Excellence

[Rutgers Cancer Institute of New Jersey](#)

\$10 Million Gift Supports New Myeloma Research Center

[The Ohio State University Comprehensive Cancer Center - James Cancer Hospital and Solove Research Institute](#)

Democratizing DNA-Based Health Risk Scores

[Fred Hutchinson Cancer Research Center](#)

Initiative Seeks to Extract Cancer Phenotypes from Electronic Health Records

[Vanderbilt-Ingram Cancer Center](#)

Grant Bolsters Deep Tissue Imaging Research

[Vanderbilt-Ingram Cancer Center](#)

Ultrasound Technology Research Leads to \$2 Million NCI Grant

[Cancer Center at Illinois](#)

Cancer Pilot Projects Funded

[Cancer Center at Brown University](#)

LEADERSHIP TRANSITIONS

Interim Executive Director Announced

[Winship Cancer Institute of Emory University](#)



Adam Marcus, PhD, has been appointed interim executive director of Winship Cancer Institute of Emory University. Dr. Marcus assumes the role from Walter J. Curran, Jr., MD, while Emory University conducts a national search for Winship's next executive director. [Read More](#)

Wakelee Appointed Deputy Director

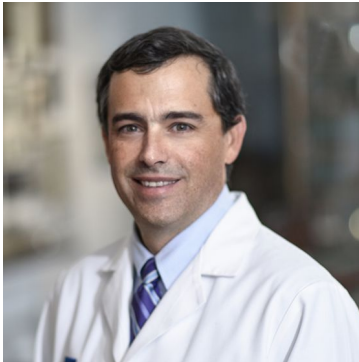
[Stanford Cancer Institute](#)



Heather Wakelee, MD, has been appointed deputy director of the Stanford Cancer Institute, effective January 2021. She has also been named as the new division chief of oncology in Stanford University School of Medicine's Department of Medicine. [Read More](#)

Camp Named Chief of Surgical Oncology

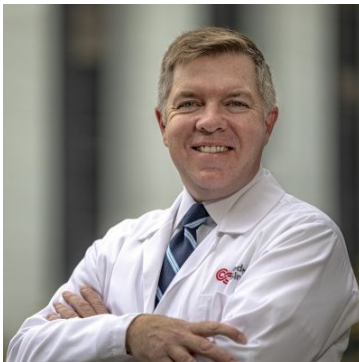
Dan L Duncan Comprehensive Cancer Center at Baylor College of Medicine



E. Ramsay Camp, MD, FACS, has joined the Dan L Duncan Comprehensive Cancer Center at Baylor College of Medicine as professor and chief of surgical oncology in the Michael E. DeBakey Department of Surgery's Division of Surgical Oncology. [Read More](#)

Hematologist/Stem Cell Biologist to Direct Hematology and Cellular Therapy

Cedars-Sinai Cancer



John P. Chute, MD, has been selected to direct the Division of Hematology and Cellular Therapy in the Department of Medicine at Cedars-Sinai Cancer. The physician-scientist also serves as director of the Center for Myelodysplastic Diseases Research and associate director of the Board of Governors Regenerative Medicine Institute in the Department of Biomedical Sciences. [Read More](#)

Multiple Myeloma Expert Joins Sylvester Leadership

Sylvester Comprehensive Cancer Center, University of Miami Health System



Hematologic oncologist **C. Ola Landgren, MD, PhD**, is the inaugural leader of a new research program, experimental therapeutics, at Sylvester Comprehensive Cancer Center, University of Miami Health System. Dr. Landgren was chief of myeloma service for the past six years at Memorial Sloan Kettering Cancer Center. [Read More](#)

Tereffe Named Chief Medical Executive

The University of Texas MD Anderson Cancer Center

The University of Texas MD Anderson Cancer Center has named **Welela Tereffe, MD**, as chief medical executive. She assumed his new position



and joined the institution's executive leadership team on January. [Read More](#)

New Division Chief of Blood and Marrow Transplantation Named Stanford Cancer Institute



David Miklos, MD, PhD, has been appointed the new division chief of Blood and Marrow Transplantation in Stanford University School of Medicine's Department of Medicine, effective January 2021. Dr. Miklos will be only the third chief in the more than 30-year history of the program, succeeding **Robert Negrin, MD**, after his 20 years in that role. [Read More](#)

Halene Appointed Chief of Hematology Yale Cancer Center, Yale School of Medicine



Stephanie Halene, MD, PhD, has been appointed chief of hematology at Yale Cancer Center, Smilow Cancer Hospital and the Yale School of Medicine Department of Internal Medicine. She received her medical degree and doctorate degree from Eberhard Karls University of Tübingen in Tübingen, Germany. [Read More](#)

Smith Appointed Chief, Section of Hematology/Oncology The University of Chicago Medicine Comprehensive Cancer Center



The University of Chicago Department of Medicine has announced that **Sonali Smith, MD**, an expert in lymphoma therapeutics, has been appointed as chief of the Section of Hematology/Oncology. Dr. Smith has been serving in an interim capacity since April 2019.. [Read More](#)

RESEARCH HIGHLIGHTS

Biomarker of Aggressive Childhood Cancer Discovered Sidney Kimmel Comprehensive Cancer Center at Johns Hopkins University

Clinical Trial Shows Microbubbles May Improve Effectiveness of Radiation Therapy for Liver Cancer

Sidney Kimmel Cancer Center at Jefferson Health

Key Driver of the Spread of Cancer to the Brain Discovered

VCU Massey Cancer Center

FDA Approval Granted for Prostate Cancer Imaging Technique

UCSF Helen Diller Family Comprehensive Cancer Center

New Combination Therapy Could Help Fight Difficult-to-Treat Cancers With Common Mutations

UCLA Jonsson Comprehensive Cancer Center

Research Identifies Safe and Effective Method of Delivering Medicines to the Lungs

Rutgers Cancer Institute of New Jersey

Sequencing Study Highlights Previously Unknown Myeloma Resistance Mechanisms

Roswell Park Comprehensive Cancer Center

Scientists Discover Promising Key to Preventing Cancer Relapse After Immunotherapy

The Tisch Cancer Institute at Mount Sinai

Pod E-Cigarettes Less Harmful Than Regular Cigarettes, Study Finds

Cancer Center at Brown University

Study Shows Regional Variation in Prostate Cancer Genomic Testing

Yale Cancer Center, Yale School of Medicine

Drugs Create Balancing Act for Patients With Non-Small Cell Lung Cancer

Sidney Kimmel Comprehensive Cancer Center at Johns Hopkins University

More Cancer Patients Could Benefit From Rehabilitation, Researcher Says

WVU Cancer Institute

Study: Potential Cancer Therapy May Boost Immune Response

Cedars-Sinai Cancer

Genomics, Mathematics Help Personalize Radiation Therapy for Lung Cancer

Cleveland Clinic Cancer Center

Homegrown Immunotherapy Tried in Lung Cancer

Duke Cancer Institute, Duke University Medical Center

Immune Cell That Drives Breast Cancer Growth Could Be Effective Target in Immunotherapies to Treat the Disease

VCU Massey Cancer Center

Novel Antibody-Drug Conjugate Shows Promising Early Results in Rare Blood Cancer

The University of Texas MD Anderson Cancer Center

Big Data Powers Design of 'Smart' Cell Therapies

UCSF Helen Diller Family Comprehensive Cancer Center

Prognostic, Predictive Markers Have Growing Importance in CLL Management

Fox Chase Cancer Center, Temple Health

Study Links Persistent Cough to E-Cigarette Use Among College Students

UK Markey Cancer Center

OTHER NEWS & COVID-19

Changes Needed to Address Financial Hardship From Cancer

University of Colorado Cancer Center



Cathy Bradley, PhD, deputy director of the University of Colorado Cancer Center, is the lead author of a paper that suggests that it is time to add routine screening for financial hardships after a cancer diagnosis as a quality measure in clinical practice. [Read More](#)

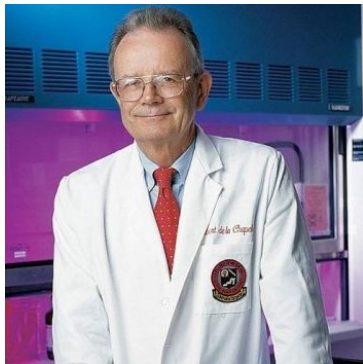
New Cancer Drugs Lead to Life-Threatening Financial Choices

Fred Hutchinson Cancer Research Center

A raft of studies by health outcomes researchers at Fred Hutchinson Cancer Research Center illustrate the difficult choices cancer patients are forced to make regarding an expanding class of targeted drugs called tyrosine kinase inhibitors. [Read More](#)

Ohio State Announces Passing of Albert de la Chapelle

The Ohio State University Comprehensive Cancer Center – James Cancer Hospital and Solove Research Institute



OSUCCC - James has announced the passing of **Albert de la Chapelle, PhD, MD**, a distinguished university professor in the Department of Cancer Biology and Genetics at Ohio State who played a key role in developing and leading the university's human cancer genetics program to prominence. [Read More](#)

Researchers Discover Men Fighting Both Cancer and COVID-19 at Higher Risk Than Women

The University of Kansas Cancer Center

Men with cancer and COVID-19 may be at significantly higher risk for severe symptoms and even death as compared to females fighting both, a University of Kansas Cancer Center research team led by **Anup Kasi, MD, MPH**, has found. [Read More](#)



Study Provides Evidence for a 7-Day Quarantine for University Students Exposed to COVID-19

UK Markey Cancer Center



A new University of Kentucky study provides direct evidence for a testing strategy that could be used to support a shortened period of quarantine for university students who are exposed to COVID-19 but are asymptomatic. **Jill Kolesar, PharmD**, is principal investigator of the study. [Read More](#)

Virologist Part of Historic FDA Panel That Endorsed COVID-19 Vaccine

UPMC Hillman Cancer Center



Patrick Moore, MD, MPH, distinguished professor of microbiology and molecular genetics at the University of Pittsburgh School of Medicine, was a part of the small committee of scientists tasked by the U.S Food and Drug Administration with reviewing the data provided by the pharmaceutical company Pfizer, which has developed a COVID-19 vaccine. [Read More](#)

Prostate Cancer Regulator Plays Role in COVID-19, Providing a Promising Treatment Lead

University of Michigan Rogel Cancer Center

By taking a lesson from prostate cancer, researchers now have a promising lead on a treatment for COVID-19. Two proteins, ACE2 and TMPRSS2, help the coronavirus gain entry and replicate within cells. TMPRSS2 is well-known to **Arul Chinnaiyan, MD, PhD**. His lab discovered that TMPRSS2 fuses with the ETS gene to drive more than half of all prostate cancers. [Read More](#)

Newly Diagnosed Cancer Patients, African Americans More at Risk for COVID-19

Case Comprehensive Cancer Center

Cancer patients, especially newly diagnosed and African-American patients, are significantly at risk for COVID-19 infection, hospitalization, and mortality, according to a new study published by researchers from Case Western Reserve University School of Medicine and the Case Comprehensive Cancer Center. [Read More](#)

Similar Factors Cause Health Disparities in Cancer, COVID-19

University of Michigan Rogel Cancer Center

Income level, employment, housing location, medical insurance, education, tobacco and alcohol use, diet and obesity, access to medical care. These are some of the factors causing worse cancer outcomes in people who are Black. The same factors are also causing worse outcomes from COVID-19 in this population. [Read More](#)

JOB OPPORTUNITIES

Neuro-Oncology Research Director

Cedars-Sinai Cancer

Associate Director of Translational Science/Associate Director of Clinical Trials - 2 positions

Cedars-Sinai Cancer

Chief of Surgical Oncology

Sidney Kimmel Cancer Center at Jefferson Health

Affiliate Research Consortium (ARC) Coordinator

University of Florida Health Cancer Center

Assistant Professor of Oncology

Livestrong Cancer Institutes, The University of Texas at Austin, Dell Medical School

Biostatistician

Medical College of Wisconsin Cancer Center

AACI MEETINGS AND EVENTS



13th Annual AACI CRI Meeting

SAVE THE DATE

July 13-15, 2021



2021 AACI/CCAF Annual Meeting

SAVE THE DATE

October 17-19, 2021

MEMBER MEETING ANNOUNCEMENTS

Cancer Disparities Symposium



Medical Arts Building
3708 Fifth Avenue, Suite 503
Pittsburgh, PA 15213
412-647-6111

FOLLOW US



Copyright 2021 | Association of American Cancer Institutes
