

Some email communications may be filtered to your Spam or Junk folder, even if you have subscribed to them. Please mark [aaciupdate@aaci-cancer.ccsend.com](mailto:aaciupdate@aaci-cancer.ccsend.com) as a Safe Sender to ensure that AACI emails are delivered to your inbox.

## News From the Association of American Cancer Institutes | July 2021

[Click here](#) to read the full newsletter on our website.



[Awards & Honors](#) | [Grants & Gifts](#) | [Leadership Highlights](#) | [Research Highlights](#) | [Other News & COVID-19](#)

### AACI HEADLINES

#### [Winship Names Ramalingam New Executive Director](#)



**Suresh S. Ramalingam, MD**, has been named executive director of Winship Cancer Institute of Emory University. A thoracic oncologist and physician scientist, Dr. Ramalingam has served as Winship's deputy director since 2016. He will preside over the largest expansion in Winship's history, including construction of a 17-story cancer facility, and he will lead the institute as it seeks renewal of its National Cancer Institute designation. [Read More](#)

#### [AACI Supporter Message: Patient Resource Navigator](#)

**PATIENT RESOURCE NAVIGATOR**

*Uniquely guide each cancer patient*

- Ensure Educational Health Equity
- Increase Patient Retention
- Offer Better Adherence & Outcomes

**Patient Resource Navigator** provides the tools to guide patients through their care continuum. This leading-edge platform offers one-to-one patient education guides and apps, created with specific content for each patient's diagnosis and treatment plan. System-provided metrics assist in demonstrating patient-centered care, meeting accreditation standards and developing marketplace differentiation. [Read More](#)

#### [Sidney and Caroline Kimmel to Receive Champion for Cures Award](#)

**Sidney and Caroline Kimmel** have been selected by the AACI Board of Directors to receive the 2021 AACI **Champion for Cures Award**, which recognizes transformational philanthropy that advances our shared vision of a future without cancer. **Karen Knudsen, MBA, PhD**, former SKCC director, AACI past president, and current CEO of the American Cancer Society, will virtually present the award to the Kimmels during the **2021 AACI/CCAF Annual Meeting** in October. [Read More](#)



## CRI Meeting Spotlight: Community Outreach and Engagement



There is still time to register for the **13th Annual AACI CRI Meeting, July 13-15**. The virtual meeting will provide an innovative and quality educational experience that aligns with AACI's strategic goal of stimulating cancer center interactions to maximize resources by creating opportunities for peer-to-peer networking and collaboration. Highlights include a session titled "Community Outreach and Engagement: Knowing Your Catchment Area." [Read More](#)

## Register Today for the Next PCLI Webinar



AACI's **Physician Clinical Leadership Initiative (PCLI)** will host **The Role of the Clinical Pharmacist in an Academic Hematology/Oncology Practice** at 2:00 pm eastern time on **Tuesday, August 24**. This webinar will cover the clinical pharmacist (CP) training and supervision requirements along with roles and responsibilities. [Read More](#)



## AACI Supports Efforts to 'Get HPV Vaccination Back on Track'

AACI cancer centers are encouraged to endorse a **statement** recently issued by the Comprehensive Cancer Center at St. Jude Children's Research Hospital, calling for the resumption of the human papillomavirus (HPV) vaccine among adolescents in the United States. The COVID-19 pandemic has profoundly interrupted delivery of key preventive services, resulting in many U.S. adolescents missing routine HPV vaccine doses. [Read More](#)

## Virtual Hill Day Participants Present Unified Voice in Support of Cancer Research

On **Wednesday, June 9**, AACI co-hosted the 2021 Virtual Hill Day with the **American Association for Cancer Research (AACR)**. Ninety-three cancer center directors, researchers, oncologists, survivors, and other advocates, representing 26 states, attended meetings with legislators and staff to present a unified voice in support of stable funding increases for the National Institutes of Health (NIH) and the National Cancer Institute (NCI). [Read More](#)

## NEWS FROM THE CENTERS

### AWARDS & HONORS

## Lovly Receives ECOG-ACRIN Young Investigator Award



**Christine Lovly, MD, PhD**, is the recipient of the 2021 ECOG-ACRIN Young Investigator Award. She is co-leader of the Translational Research and Interventional Oncology Program at Vanderbilt-Ingram Cancer Center. [Read More](#)

## Diagnostic Radiologist Earns High Honors From Professional Society

Roswell Park Comprehensive Cancer Center

---



A veteran diagnostic radiologist and nuclear physician, Roswell Park Comprehensive Cancer Center's **Alan Klitzke, MD, FACNM**, has been named a fellow of the American College of Radiology (ACR). Recognition as a fellow is the highest level of ACR membership, with only 10 percent of members awarded this distinction. [Read More](#)

## Sheppard Receives Professional Achievement Award

VCU Massey Cancer Center

---

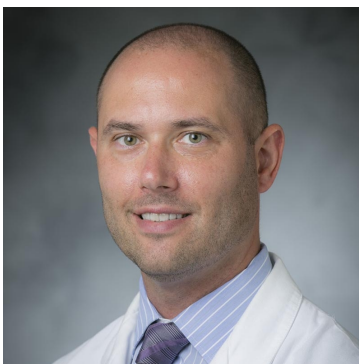


**Vanessa B. Sheppard, PhD**, was recently conferred the 2021 Women in Science, Dentistry and Medicine Professional Achievement Award from the VCU School of Medicine. She is associate director for community outreach, engagement and health disparities at VCU Massey Cancer Center. [Read More](#)

## Fecci Inducted Into ASCI

Duke Cancer Institute, Duke University Medical Center

---



Duke Cancer Institute (DCI) neurosurgeon-scientist **Peter Fecci, MD, PhD**, has been inducted into the American Society for Clinical Investigation (ASCI). At DCI he serves as director of the Duke Center for Brain and Spine Metastasis and associate deputy director of the Preston Robert Tisch Brain Tumor Center. [Read More](#)

## Fox Chase Fellow Recognized With Young Investigator Award

Fox Chase Cancer Center, Temple Health

---



**Miron, MD**, a medical oncology fellow at Fox Chase Cancer Center, with the 2021 New Discoveries Young Investigator Award. [Read More](#)

## Pal Named Komen Scholar

[Vanderbilt-Ingram Cancer Center](#)

---



**Tuya Pal, MD**, associate director for cancer health disparities at Vanderbilt-Ingram Cancer Center and Ingram Professor of Cancer Research, has been named a Komen Scholar. Dr. Pal specializes in genomics and health disparities across populations, including a focus on the outcomes of early onset breast cancer in Black women. [Read More](#)

## GRANTS & GIFTS

### \$10.2 Million Grant Will Help Develop New Lung Cancer Therapies

[Moffitt Cancer Center](#)

---

### SPORE Grant Secured for Head and Neck Cancer

[University of Colorado Cancer Center](#)

---

### Study to Reveal Health Equity Impacts of Flavored Tobacco Sale Restrictions

[UK Markey Cancer Center](#)

---

### Institute on Aging Receives Grant to Research Link Between Blood Sugar, Alzheimer's Disease

[UAMS Winthrop P. Rockefeller Cancer Institute](#)

---

## LEADERSHIP TRANSITIONS

### Aplin Named New Deputy Director

[Sidney Kimmel Cancer Center at Jefferson Health](#)

---



**Andrew E. Aplin, PhD**, has been named deputy director for scientific strategy of the Sidney Kimmel Cancer Center (SKCC) at Jefferson Health. Dr. Aplin, who is the associate director for basic research at SKCC and the Kalbach-Newton Professor in Cancer Research, assumed the role on June 1. [Read More](#)

## Hackett to Lead Operations

Albert Einstein Cancer Center, Albert Einstein College of Medicine

---



**Lauren Hackett, MPA**, has been appointed the deputy director of administration of Albert Einstein Cancer Center and associate vice president of cancer medicine at Montefiore Medicine. Currently the chief operating officer at the Allen Institute, Hackett will assume her new roles in August. [Read More](#)

## Sparano Recruited as Deputy Director

The Tisch Cancer Institute at Mount Sinai

---



Mount Sinai Health System has recruited an internationally recognized expert in the management of breast cancer and HIV-associated malignancies, **Joseph A. Sparano, MD, FACP**, as chief of Hematology and Medical Oncology and deputy director of The Tisch Cancer Institute. [Read More](#)

## Physician-Researcher to Direct Thoracic Medical Oncology

Cedars-Sinai Cancer

---



Thoracic medical oncologist **Sukhmani K. Padda, MD**, recently was selected to direct Thoracic Medical Oncology at Cedars-Sinai Cancer. She joins Cedars-Sinai from Stanford University. [Read More](#)

## Senior Vice President of External Affairs Named

Dana-Farber Cancer Institute, Harvard Medical School

---



**Caroline Powers** has been named senior vice president for external affairs at Dana-Farber Cancer Institute. She joins Dana-Farber from the American Cancer Society Cancer Action Network (ACS CAN), where she served as senior director of federal relations. [Read More](#)

## New Assistant Directors Will Expand Community Outreach and Engagement

University of Michigan Rogel Cancer Center

---

The University of Michigan Rogel Cancer Center has named two new assistant directors to help facilitate and enhance its community outreach and engagement efforts. **Elena Stoffel, MD, MPH**, will be assistant director of cancer disparities outreach, and **Lawrence An, MD**, will be assistant director for cancer screening and prevention. [Read More](#)

## Cancer Biologist to Lead New Cancer Dormancy and Tumor Microenvironment Institute

**Albert Einstein Cancer Center, Albert Einstein College of Medicine**

---



Albert Einstein Cancer Center (AECC), Albert Einstein College of Medicine, and Montefiore Health System have announced that **Julio Aguirre-Ghiso, PhD**, has been named founding director of the Cancer Dormancy and Tumor Microenvironment Institute, director of the Gruss-Lipper Biophotonics Center, and co-leader of the AECC Tumor Microenvironment and Metastasis Program. [Read More](#)

## Garvin is New Director of Research Development-Clinical Research

**Duke Cancer Institute, Duke University Medical Center**

---



**Shanta Laurie Garvin, MHSA, MPA, CRA**, has joined Duke Cancer Institute as director of Research Development-Clinical Research. In her new role she will lead and manage activities to enhance processes, prepare for continued growth, assure staff development, and expand communication with investigators, among other duties. [Read More](#)

## Inaugural Director of Center for Immuno-Oncology Named

**Yale Cancer Center, Yale School of Medicine**

---



**Marcus Bosenberg, MD, PhD**, has been named the inaugural director of the Yale Center for Immuno-Oncology. He is contact principal investigator of the Yale SPORE (Specialized Program of Research Excellence) in skin cancer, and director of the Center for Precision Cancer Modeling. [Read More](#)

## Jenkins to Help Lead Clinical Trials Expansion

**UAMS Winthrop P. Rockefeller Cancer Institute**

---

**Amy Jo Jenkins, MS, CCRP**, recently joined the Winthrop P. Rockefeller Cancer Institute's new Office of Clinical Trials Administration and will lead the early phase clinical trials at the University of Arkansas for Medical Sciences (UAMS). She is immediate past president of the board of directors for the Society of Clinical Research Associates. [Read More](#)

## Tumor Environment and Metastasis Research Program Co-Leader Named

**Robert H. Lurie Comprehensive Cancer Center of Northwestern University**

---



**Luisa Iruela-Arispe, PhD**, a vascular biologist, has been named co-leader of the Tumor Environment and Metastasis Program at the Robert H. Lurie Comprehensive Cancer Center. The goal of the program is to elucidate how interactions between tumor cells, immune cells, and components of the host stromal microenvironment impact tumor development and progression. [Read More](#)

## Cook Joins CU as Associate Director of Population Sciences

[University of Colorado Cancer Center](#)

---



Bringing more than two decades of experience in the fields of population health and cancer prevention and control, **Linda Cook, PhD**, will join the University of Colorado Cancer Center in July as associate director of population sciences. She will join the leadership team overseeing the CU Cancer Center's Cancer Prevention & Control Program. [Read More](#)

## First Associate Director for Diversity, Equity, Inclusion and Justice Named

[University of Michigan Rogel Cancer Center](#)

---



The University of Michigan Rogel Cancer Center has named **Erika Newman, MD**, its first associate director for diversity, equity, inclusion and justice. She will lead the center's efforts to diversify the next generation of health care professionals and researchers, and to champion an anti-racist and just culture within the cancer center. [Read More](#)

### RESEARCH HIGHLIGHTS

#### Safe Approach Demonstrated for Dramatically Reducing Use of Opioids Following Surgery

[Roswell Park Comprehensive Cancer Center](#)

---

#### Identifying Potential Treatment for Triple-Negative Breast Cancer

[Rutgers Cancer Institute of New Jersey](#)

---

#### Molecular Clues Could Signal Eye Cancer Survival Odds

[Stanford Cancer Institute](#)

---

#### Newly Approved Sotorasib Prolongs Survival in KRAS G12C-Mutated Lung Cancer

[The University of Texas MD Anderson Cancer Center](#)

---

#### Targeted Therapy for 'Undruggable' Lung Cancer Stems From Decades of UCSF Research

[UCSF Helen Diller Family Comprehensive Cancer Center](#)

---

## **Vulnerability in Mutant KRAS Pancreatic Tumors Discovered and Targeted**

**VCU Massey Cancer Center**

---

## **Inherited Risk of Early-Onset Cancer Higher Among Latinos, African Americans, Asian/Pacific Islanders**

**USC Norris Comprehensive Cancer Center**

---

## **Study Shows Novel Test Can Detect New and Recurrent Bladder Cancer**

**Yale Cancer Center, Yale School of Medicine**

---

## **Astronomy Meets Pathology to Identify Predictive Biomarkers for Cancer Immunotherapy**

**Sidney Kimmel Comprehensive Cancer Center at Johns Hopkins University**

---

## **New Drug Target Identified for Treating Aggressive Prostate Cancer**

**Case Comprehensive Cancer Center**

---

## **New Insights on Sarcomatoid Kidney Cancer: Clear Benefit From Checkpoint Inhibitors**

**Roswell Park Comprehensive Cancer Center**

---

## **Artificial Intelligence Model Developed to Hasten Clinical Trials**

**University of Florida Health Cancer Center**

---

## **Dual Immunotherapy Regimen Delays Cancer Progression in Advanced Melanoma**

**Sidney Kimmel Comprehensive Cancer Center at Johns Hopkins University**

---

## **Study of Cancer Care-at-Home Model Demonstrates Lower Costs, Better Outcomes**

**Huntsman Cancer Institute, University of Utah**

---

## **Mantis Shrimp-Inspired Camera Provides Second Opinion During Cancer Surgery**

**Cancer Center at Illinois**

---

## **Study Shows Methods to Increase Cancer Screening Awareness in Disparate Populations**

**UK Markey Cancer Center**

---

## **Novel Function Uncovered for Tumor Suppressor in Regulating Cancer Progression Through Cellular Metabolism**

**Sidney Kimmel Cancer Center at Jefferson Health**

---

## **Robotic Surgery Approach Offers New Breast Cancer Surgery Option**

**The Ohio State University Comprehensive Cancer Center - James Cancer Hospital and Solove Research Institute**

---

## **Combination Targeted Therapy Provides Durable Remission for Chronic Lymphocytic Leukemia**

**The University of Texas MD Anderson Cancer Center**

---

## **New Technique Developed to Study Microcancers and Screen Cancer-Fighting Drugs**

**Cancer Center at Illinois**

---

## **New Tools Developed to Advance Genomics Research**

**University of Virginia Cancer Center**

---



## New Findings Expand Hopes for Stem Cell Cancer Prevention

[Stanford Cancer Institute](#)

---

## Educational Intervention Can Help Vapers Use Their E-Cigarettes to Quit Smoking

[Moffitt Cancer Center](#)

---

## Living Therapeutics Initiative Will Accelerate Treatment Development, Delivery

[UCSF Helen Diller Family Comprehensive Cancer Center](#)

---

## African Americans With Oropharyngeal Squamous Cell Carcinomas Have Poor Treatment Outcomes Independent of Access to Care

[Case Comprehensive Cancer Center](#)

---

### OTHER NEWS & COVID-19

## Facebook Live Series Provides Timely, Useful Information

[The University of Kansas Cancer Center](#)

---



If it's 10:00 am central time Wednesday, a smiling **Roy Jensen, MD**, is most likely greeting his cyberguests for another episode of *Bench to Bedside*. Dr. Jensen, director of The University of Kansas Cancer Center and immediate past president of AACI, hosts the Facebook Live series that uses a talk-show format to cover a broad range of topics related to cancer. [Read More](#)

## Ground Broken on First Freestanding Cancer Hospital in New Jersey

[Rutgers Cancer Institute of New Jersey](#)

---

RWJBarnabas Health and Rutgers Cancer Institute of New Jersey, in partnership with the New Brunswick Development Corporation, have broken ground on the state's first freestanding cancer hospital. The 12-story facility will be named the Jack and Sheryl Morris Cancer Center. [Read More](#)

## Cancer Care Closer to Home

[Association of American Cancer Institutes](#)

---

NJ Spotlight News interviewed AACI Past President **Stanton L. Gerson, MD**, about the significance of providing services to cancer patients near where they live. Jersey City Medical Center has opened a new infusion facility in partnership with **Rutgers Cancer Institute of New Jersey**, an AACI member. [Read More](#)

## Proton Therapy Opens in Utah

[Huntsman Cancer Institute, University of Utah](#)

---

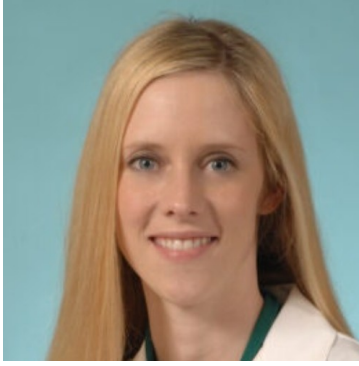
The \$31 million Senator Orrin G. Hatch Proton Therapy Center at Huntsman Cancer Institute has opened. It is one of only 37 such centers nationwide. According to the National Cancer Institute, nearly half of all cancer patients receive some type of radiation therapy. [Read More](#)

## Siteman Advances Proton Therapy Care

[Siteman Cancer Center](#)

---

Siteman Cancer Center at Barnes-Jewish Hospital and Washington University School of Medicine in St. Louis is advancing proton therapy care for patients by adding the latest, most innovative technology to its S. Lee Kling Proton Therapy Center. **Stephanie M. Perkins, MD**, directs the center. [Read More](#)



## JOB OPPORTUNITIES

### **Regulatory Program Assistant II - Vaccine Trials Unit**

**Fred Hutchinson Cancer Research Center**

---

### **Laboratory Director, Biospecimen Repository Core Facility**

**The University of Kansas Cancer Center**

---

### **Multiple Positions**

**Georgetown Lombardi Comprehensive Cancer Center**

---

### **Assistant Vice President, Research Administration**

**Sylvester Comprehensive Cancer Center, University of Miami Health System**

---

### **Program Co-Leader, Cancer Prevention & Control**

**VCU Massey Cancer Center**

---

### **Program Co-Leader, Developmental Therapeutics**

**VCU Massey Cancer Center**

---

### **Program Leader, Cancer Biology**

**VCU Massey Cancer Center**

---

### **Study Coordinator III, Experimental Therapeutics Incubator**

**University of Florida Health Cancer Center**

---

### **Associate/Full Professor - Cancer Biology Program**

**University of Hawai'i Cancer Center, University of Hawai'i at Mānoa**

---

### **Clinical Research Manager**

**OHSU Cancer Research Center**

---

### **Director of Marketing**

**Sylvester Comprehensive Cancer Center, University of Miami Health System**

---

### **Leader, Cancer Prevention in the Pacific**

**University of Hawai'i Cancer Center, University of Hawai'i at Mānoa**

---

### **Associate/Executive Director of Research Administration and Chief Administrative Officer**

**Hollings Cancer Center, Medical University of South Carolina**

---

### **Clinical Research Coordinator II - Translational Research Concierge**

**Cedars-Sinai Cancer**

---

### **Deputy Director**

**VCU Massey Cancer Center**

---

## Program Manager - Convergent Science Virtual Cancer Center

Cedars-Sinai Cancer

---

## Regulatory Coordinator III - Translational Research Concierge

Cedars-Sinai Cancer

---

## Research Program Administrator - Shared Resources

Cedars-Sinai Cancer

---

## Research Program Administrator - Translational Research Concierge

Cedars-Sinai Cancer

---

## Senior Director, Clinical Trials Office

The University of Kansas Cancer Center

---

## Vice President, Cancer Services

WVU Cancer Institute

---

### MEMBER MEETING ANNOUNCEMENTS



## Artificial Intelligence in Oncology Symposium: Precision Medicine and Cancer Disparities

**VIRTUAL EVENT**

Case Comprehensive Cancer Center

November 8-9, 2021

---

### AACI MEETINGS AND EVENTS



## 13th Annual AACI CRI Meeting

**VIRTUAL EVENT | REGISTER TODAY**

July 13-15, 2021

---



## 2021 AACI/CCAF Annual Meeting

**VIRTUAL EVENT | REGISTER TODAY**

October 19-21, 2021

---



Medical Arts Building  
3708 Fifth Avenue, Suite 503  
Pittsburgh, PA 15213  
412-647-6111

FOLLOW US



Copyright 2021 | Association of American Cancer Institutes