

Some email communications may be filtered to your Spam or Junk folder, even if you have subscribed to them. Please mark aaciupdate@aaci-cancer.ccsend.com as a Safe Sender to ensure that AACI emails are delivered to your inbox.

News From the Association of American Cancer Institutes | February 2022

[Click here](#) to read the full newsletter on our website.



[Awards & Honors](#) | [Grants & Gifts](#) | [Leadership Highlights](#) | [Research Highlights](#) | [Other News & COVID-19](#)
[Job Opportunities](#) | [Meeting Announcements](#)

AACI HEADLINES

[Cancer Clinician and Researcher to Serve as Director of GW Cancer Center](#)



The George Washington University (GW) is pleased to announce that **Julie E. Bauman, MD, MPH**, will join its academic medical enterprise to serve as the director of GW Cancer Center in March 2022. In this role, Bauman will build on the momentum of the last five years to enhance the clinical, research, and academic activities at the cancer center and establish it as the leading provider of cancer care and research in the Washington, DC region. She will also serve as professor of medicine in the GW School of Medicine and Health Sciences. [Read More](#)

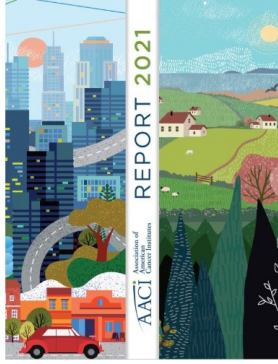
[Understanding Catchment Area Coverage to Address Cancer Disparities](#)



As part of the presidential initiative of **Karen E. Knudsen, MBA, PhD**, AACI surveyed its members in 2020 to understand catchment area coverage. Results of the survey were published in a manuscript, "[Assessing the Coverage of U.S. Cancer Center Primary Catchment Areas](#)," in *Cancer Epidemiology, Biomarkers & Prevention*, a journal of the American Association for Cancer Research. SKCC Associate Director for Community Integration **Amy Leader, PhD, MPH**, and Associate Director for Data Science, **Christopher McNair, PhD**, led the data analysis. [Read More](#)

[2021 AACI Report Now Available Online](#)

In 2021 AACI continued to take a strong position on the impact of systemic racism and other forms of discrimination in public health. The [2021 AACI Report](#) details the association's efforts to promote diversity,



equity, and inclusion at North America's leading cancer centers and in our communities, including the introduction of AACI's Cancer Health Equity Award and AACI President Dr. Caryn Lerman's presidential initiative focusing on diversifying the cancer leadership pipeline. [Read More](#)

[CRI Abstract Submissions Now Open](#)

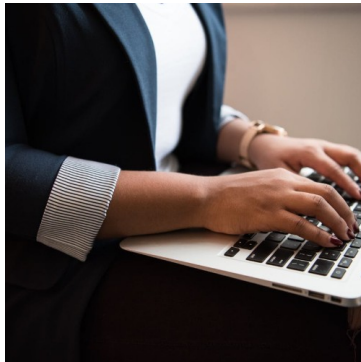


The AACI CRI Steering Committee is currently soliciting abstracts for the **14th Annual AACI CRI Meeting**. The purpose of the abstracts is to inform meeting attendees about clinical trials office challenges and solutions implemented at AACI cancer centers. The online [abstract submission tool](#) is now live. [Read More](#)

[Champion for Cures Nominations Due February 28](#)

AACI cancer center directors are invited to [submit nominations](#) for the 2022 **Champion for Cures Award** by **Monday, February 28**. The Champion for Cures Award will be presented during the 2022 AACI/CCAF Annual Meeting, October 2-4, at the InterContinental at the Plaza, Kansas City. [Read More](#)

[Encourage Your Legislators to Pass the FY2022 Budget](#)



As of today, the United States government has not passed a Fiscal Year (FY) 2022 budget. The federal government is currently operating with funding through a Continuing Resolution at spending levels for FY2021 until at least February 18. AACI encourages you to ask your legislators to complete the FY2022 budget and to fund the National Cancer Institute at an appropriate level. [Read More](#)

[Save the Date: 2022 AACI/AACR Virtual Hill Day](#)



AACI will jointly host its annual Hill Day with the American Association for Cancer Research (AACR) on **Wednesday, June 15**. The event will be held virtually for the third year. All faculty and staff of AACI cancer centers are invited to spend the day advocating for cancer research funding. [Read More](#)

[Market Differentiator: Patient Resource Navigator](#)



Of more than 85,000 patients surveyed:

Improves outcomes: 95% state the guides assist them in following their doctor's treatment plan

Increases market share: 90% report the guides will influence their recommendation of cancer center

Ensures educational equity: 94% found the guides comprehensive & easy to read

For more information, contact [Amy Galey](#). [Learn More](#)

NEWS FROM THE CENTERS

AWARDS & HONORS

[Olopade Recognized for Transformative Breast Cancer Research](#)

[The University of Chicago Medicine Comprehensive Cancer Center](#)



University of Chicago Medicine breast cancer expert **Olufunmilayo Olopade, MD**, has been named the recipient of this year's William L. McGuire Award and Lecture, one of the highest honors in breast cancer research, by the San Antonio Breast Cancer Symposium. [Read More](#)

[Malik Honored by American Thoracic Society](#)

[University of Illinois Cancer Center](#)



University of Illinois Cancer Center member **Asrar Malik, PhD**, was awarded the 2021 Solbert Permutt Trailblazer Award in Pulmonary Physiology and Medicine by the American Thoracic Society. He was nominated for his commitment to mentorship and pioneering work in endothelial and immune cells. [Read More](#)

[Physicians Receive ACS Awards](#)

[UMMC Cancer Center and Research Center](#)

Two University of Mississippi Medical Center physicians have been honored by the American Cancer Society for partnering with the nonprofit in preventing and detecting cancer. **Pierre de Delva, MD**, is the ACS South Region 2021 Cancer Control Partner of the Year. **William Robinson, MD**, is the 2021 Get Screened Champion of the Year. [Read More](#)

GRANTS & GIFTS

[\\$7.6 Million Gift Launches New Lung Cancer Research Initiative](#)

[University of Michigan Rogel Cancer Center](#)

[\\$3.15 Million Awarded to Advance Drug Development Platform for Hepatocellular Carcinoma](#)

[The Tisch Cancer Institute at Mount Sinai](#)

LEADERSHIP TRANSITIONS

[Dolan Named Deputy Director](#)

[The University of Chicago Medicine Comprehensive Cancer Center](#)



The University of Chicago Medicine Comprehensive Cancer Center (UCCCC) has appointed **M. Eileen Dolan, PhD**, as its deputy director. Dr. Dolan has spent the past eight years working as UCCCC's associate director for cancer research training and education coordination. Previously, she was the long-time co-leader of the center's Clinical and Experimental Therapeutics Program. [*Read More*](#)

[Kamal is First Chief Patient Officer for ACS](#)

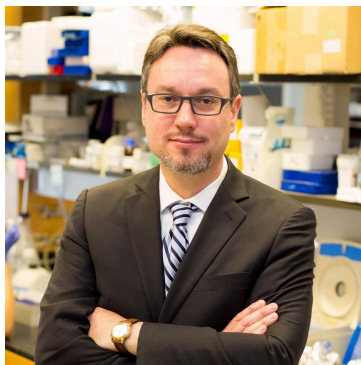
[Duke Cancer Institute, Duke University Medical Center](#)



The American Cancer Society (ACS) has hired **Arif Kamal MD, MBA, MHS, FACP, FAAHPM, FASCO**, as its first chief patient officer to lead its patient support vision and strategic plans to improve the lives of cancer patients and their families. [*Read More*](#)

[Stegh Named Brain Tumor Center Research Director](#)

[Siteman Cancer Center](#)



Alexander H. Stegh, PhD, a leading brain cancer scientist, has been named research director of the Brain Tumor Center at Siteman Cancer Center, which brings together the collective expertise of Washington University subspecialists to provide multidisciplinary care for brain tumor patients. [*Read More*](#)

[Flores Named Associate Center Director of Basic Science](#)

[Moffitt Cancer Center](#)

Elsa R. Flores, PhD, has been named Moffitt Cancer Center's associate center director of basic science. In her new role, Dr. Flores will oversee the Basic Science Division, which includes the Cancer Physiology, Drug Discovery, Immunology, Molecular Oncology, and Tumor Biology departments. [*Read More*](#)



[Lucas Named Chief Community Impact Officer](#)

[Wilmot Cancer Institute, UR Medicine](#)



Candice Lucas, EdD, MBA, has been named Wilmot Cancer Institute's first chief community impact officer. The position is located within the Community Outreach and Engagement Office with a goal of ensuring the community's diverse voices are embedded in Wilmot programs, research, and clinical practices. [Read More](#)

[Sampson Joins UNM Cancer Center as Clinical Research Administrator](#)

[University of New Mexico Comprehensive Cancer Center](#)



Cheryl Sampson, MBA, has joined the Clinical Research Office at the UNM Comprehensive Cancer Center. She brings more than 20 years of experience in clinical research program administration and has assumed increasing responsibilities over her career. [Read More](#)

[Two New Leaders Named to Enhance Patient Care](#)

[University of Michigan Rogel Cancer Center](#)

The University of Michigan Health Rogel Cancer Center has named **David C. Smith, MD**, chief medical officer and associate director for cancer clinical services, and **Shruti Jolly, MD**, associate director for the Michigan Medicine statewide cancer network. [Read More](#)

[New Program Leadership](#)

[University of Colorado Cancer Center](#)

The University of Colorado Cancer Center is pleased to announce several leadership transitions. **Patricia Ernst, PhD**, will join **Tin Tin Su, PhD**, as co-leader of the Molecular and Cellular Oncology Program, a position most recently held by **Craig Jordan, PhD**. **Stacy Fischer, MD**, will join **Jamie Studts, PhD**, and **Rajesh Agarwal, PhD**, to co-lead the Cancer Prevention and Control Program. [Read More](#)

[Jenkins, Kovak Appointed to New Leadership Positions](#)

[UAMS Winthrop P. Rockefeller Cancer Institute](#)

Amy Jo Jenkins, MS, CCRP, has been named associate director of administration for the UAMS Winthrop P. Rockefeller Cancer Institute. Succeeding Jenkins, **Matthew Kovak, MS, CCRP**, has been promoted to

[Farma Elected to Leadership Position in the Society of University Surgeons](#)

[Fox Chase Cancer Center, Temple Health](#)



Jeffrey M. Farma, MD, FACS, chief of the Division of General Surgery and co-director of the Melanoma and Skin Cancer Program at Fox Chase Cancer Center, has been elected a member-at-large for the Society of University Surgeons. [Read More](#)

[Inaugural Director of Center for Blood Cancers Appointed](#)

[Laura and Isaac Perlmutter Cancer Center at NYU Langone](#)



Faith E. Davies, MD, has been appointed the inaugural director of the Center for Blood Cancers at NYU Langone Health's Perlmutter Cancer Center. Dr. Davies currently serves as professor in the Department of Medicine at NYU Grossman School of Medicine and director of the Clinical Myeloma Program at Perlmutter. [Read More](#)

[New Chair of Hematology, Oncology and Palliative Care Named](#)

[VCU Massey Cancer Center](#)



On March 1, **Renato G. Martins, MD, MPH**, will become the new chair of hematology, oncology and palliative care at VCU Massey Cancer Center and the Department of Internal Medicine at the VCU School of Medicine. [Read More](#)

[Uy Named Leukemia Committee Co-chair of Clinical Trials Group](#)

[Siteman Cancer Center](#)



Geoffrey L. Uy, MD, a Washington University physician at Siteman Cancer Center, has been named co-chair of the Leukemia Committee of the Alliance for Clinical Trials in Oncology. [Read More](#)

[Clinical Trials Office Medical Director Appointed](#)

[Cedars-Sinai Cancer](#)

Bobbie J. Rimel, MD, has been appointed medical director for the Cancer Clinical Trials Office (CCTO) at Cedars-Sinai Cancer. Dr. Rimel's research has focused on clinical trial accrual, recruitment and informed consent. As CCTO medical director she will provide guidance and leadership to ensure the quality of services. [*Read More*](#)

[Surgeon-Scientist Tapped as Chair of Department of Neurosurgery](#)

[Duke Cancer Institute, Duke University Medical Center](#)

Gerald Arthur Grant, MD, an internationally known surgeon-scientist, has been named the new chair of the Department of Neurosurgery at Duke University School of Medicine, effective April 1. Dr. Grant returns to Duke from Stanford University. [*Read More*](#)

RESEARCH HIGHLIGHTS

[Addressing High Lung Cancer Rates Among Female Asian Non-Smokers](#)

[UCSF Helen Diller Comprehensive Cancer Center](#)

[Study: Receiving CAR T Therapy Sooner Improves Lymphoma Survival](#)

[The University of Kansas Cancer Center](#)

[Can Prozac Fight Brain Cancer?](#)

[Stanford Cancer Institute](#)

[MAPK4 Emerges as Novel Therapeutic Target for Triple-Negative Breast Cancer](#)

[Dan L Duncan Comprehensive Cancer Center](#)

[Signaling Mechanisms in Pancreatic Cancer Cells That Could Provide Treatment Targets Identified](#)

[UCLA Jonsson Comprehensive Cancer Center](#)

[Research Identifies a Key Pathway Fueling Cancer Metastasis](#)

[Roswell Park Comprehensive Cancer Center](#)

[Colorectal Cancer Screening Lagging Among Rural Women](#)

[University of Virginia Cancer Center](#)

[Genetic and Lifestyle Calculator Reveals Which Younger Adults Are Most at Risk of Colorectal Cancer](#)

[Laura and Isaac Perlmutter Cancer Center at NYU Langone](#)

[Targeted Two-Drug Therapy Effective to Treat Advanced Cervical Cancer](#)

[The Ohio State University Comprehensive Cancer Center - James Cancer Hospital and Solove Research Institute](#)

[Blood Test Helps Predict Who May Benefit From Lung Cancer Screening](#)

[The University of Texas MD Anderson Cancer Center](#)

[Cancer-Immu Data Portal Launched for Predicting Response to](#)

[Immune Checkpoint Blockade Immunotherapy](#)

[Vanderbilt-Ingram Cancer Center](#)

[Genetic Score Developed to Improve Pediatric Cancer Treatments](#)

[University of Florida Health Cancer Center](#)

[Study Shows How Ovarian Cancer Starts in High-Risk Women](#)

[Cedars-Sinai Cancer](#)

[Two Antibodies Synergize in Triple Whammy to Pediatric Cancers, Study Finds](#)

[Stanford Cancer Institute](#)

[New Color-Coded Test Quickly Reveals if Medical Nanoparticles Deliver Their Payload](#)

[Sidney Kimmel Comprehensive Cancer Center at Johns Hopkins University](#)

[New Hope for Patients With Relapsed Large B-cell Lymphoma](#)

[University of Colorado Cancer Center](#)

[Study Details Chromosome-Level Changes That Allow Melanomas to Develop Drug Resistance](#)

[UCLA Jonsson Comprehensive Cancer Center](#)

[Novel Compound Doubles Mean Survival in Pre-Clinical Study](#)

[University of Illinois Cancer Center](#)

[Researchers Pilot Device for Earlier Ovarian Cancer Detection](#)

[The University of Arizona Cancer Center](#)

[Sensitivity to Chemotherapy May Guide Treatment of Patients With Stomach Cancer](#)

[Roswell Park Comprehensive Cancer Center](#)

[VA Data Analyzed to Study Prostate Cancer Disparities](#)

[Moffitt Cancer Center](#)

[Sorting Cancers by Immune Archetypes May Offer New Approach for Precision Immunotherapies](#)

[UCSF Helen Diller Family Comprehensive Cancer Center](#)

[Study Shows How Changing Gut Microbiota Can Affect Lupus Disease Activity in Mice](#)

[The Ohio State University Comprehensive Cancer Center - James Cancer Hospital and Solove Research Institute](#)

OTHER NEWS & COVID-19

[New Initiative Aims to Create Shared Data Hub for Cancer Centers](#)

[VCU Massey Cancer Center](#)

Massey Cancer Center is working with analytics company SAS to power vital research into higher cancer and mortality rates among low-income and vulnerable populations. SAS and Massey will create the Massey Research Analytics Hub, a secure, cloud-based platform with easy-to-use visualizations of quantitative and qualitative data collected from many different sources and systems. [*Read More*](#)

[Land Purchase Approved for New Outpatient Center](#)

[UK Markey Cancer Center](#)

The University of Kentucky Board of Trustees has approved a purchase agreement for \$6.9 million to acquire residential parcels across from UK Albert B. Chandler Hospital for the construction of a new outpatient cancer treatment center and advanced ambulatory complex. [*Read More*](#)

[Survey Finds Support for Cancer Warnings on Alcohol](#)

[University of Virginia Cancer Center](#)

Less than half of Americans understand that alcohol consumption increases cancer risk, and a majority of people surveyed say they would support warning labels and drinking guidelines to increase awareness. [*Read More*](#)

[Agreement Announced to Establish Life Sciences Genomic Resource](#)

[Vanderbilt-Ingram Cancer Center](#)

Nashville Biosciences, a wholly-owned subsidiary of Vanderbilt University Medical Center, has announced an agreement with Illumina, a leading genomic technology company, to realize the full potential of VUMC's DNA databank, BioVU. [*Read More*](#)

[Children With Cancer and Other Special Needs Deserve Support During Online Learning](#)

[Sidney Kimmel Comprehensive Cancer Center at Johns Hopkins University](#)



When thousands of schools transitioned to online learning in 2020 due to the COVID-19 pandemic, many children with cancer and other health and education needs, faced significant learning challenges, according to an opinion paper co-authored by **Kathy Ruble, PhD, MSN, RN, CRNP**, director of the pediatric oncology survivorship clinic at Johns Hopkins Kimmel Cancer Center. [*Read More*](#)

[Fully Vaccinated Cancer Patients Who Had Breakthrough COVID-19 Show 13 Percent Mortality Rate](#)

[Vanderbilt-Ingram Cancer Center](#)

The first study to evaluate the clinical characteristics and outcomes of fully vaccinated patients with cancer who had breakthrough COVID-19 infections indicates they remained at high risk for hospitalization and death. Fully vaccinated patients who experienced breakthrough infections had a hospitalization rate of 65 percent, an ICU or mechanical ventilation rate of 19 percent, and a 13 percent death rate. [*Read More*](#)

JOB OPPORTUNITIES

[Associate Director for Translational Research](#)

[The University of Chicago Medicine Comprehensive Cancer Center](#)

[Senior Program Manager, Cancer Prevention and Control](#)

[Livestrong Cancer Institutes, The University of Texas at Austin, Dell Medical School](#)

[Cancer Clinical Research Coordinator 2 Thoracic Oncology](#)

[Stanford Cancer Institute](#)

[Clinical Research Coordinator 1](#)

[Fred Hutchinson Cancer Research Center](#)

[MCA Clinical Trials Director](#)

[The University of Kansas Cancer Center](#)

[Associate Director, SCCC Clinical Research Services](#)

[Sylvester Comprehensive Cancer Center, University of Miami Health System](#)

[Senior Manager, Research Support](#)

[Sylvester Comprehensive Cancer Center, University of Miami Health System](#)

[Assistant Director Regulatory Affairs](#)

[Laura and Isaac Perlmutter Cancer Center at NYU Langone](#)

[Multiple Positions - University of Arizona](#)

[The University of Arizona Cancer Center](#)

[Regulatory Clinical Research Coordinator](#)

[UC Davis Comprehensive Cancer Center](#)

[Senior Clinical Research Coordinator](#)

[UC Davis Comprehensive Cancer Center](#)

[Administrator - Division of Hematology](#)

[Winship Cancer Institute of Emory University](#)

[Clinical Site Program Manager \(In House Monitor\)](#)

[The University of Kansas Cancer Center](#)

[Clinical Trial Coordinator](#)

[UCLA Jonsson Comprehensive Cancer Center](#)

[Director, Cancer Research Conduct & Data Management](#)

[The Tisch Cancer Institute at Mount Sinai](#)

[Director, Fred Hutch Innovation Lab](#)

[Fred Hutchinson Cancer Research Center](#)

[Budget Analyst](#)

[The University of Kansas Cancer Center](#)

[Director of Regulatory Affairs](#)

[The University of Kansas Cancer Center](#)

[Multiple Openings - The University of Kansas](#)

[The University of Kansas Cancer Center](#)

[Science Writer and Editor, CoVPN](#)

[Fred Hutchinson Cancer Research Center](#)

[Assistant Director, Clinical Research Administration](#)

[University of Florida Health Cancer Center](#)

[Clinical Research Manager - Solid Tumors Unit](#)

[University of Florida Health Cancer Center](#)

MEMBER MEETING ANNOUNCEMENTS

[Equity by Design in Clinical Research: Cancer Trials](#)

[WEEKLY WEBINAR SERIES | REGISTER TODAY](#)

[Dana-Farber Cancer Institute, Harvard Medical School](#)

[March 8 - April 14, 2022](#)

[Annual Midwest Tumor Microenvironment Meeting](#)

[REGISTER TODAY](#)

[University of Kansas Medical Center](#)

[May 23-25, 2022](#)

AACI MEETINGS AND EVENTS

[2022 AACI/AACR Hill Day](#)

[SAVE THE DATE | VIRTUAL MEETING](#)

[June 15, 2022](#)

[14th Annual AACI CRI Meeting](#)

[SAVE THE DATE](#)

[July 12- 14, 2022](#)

[Loews Chicago O'Hare Hotel](#)

[Rosemont, IL](#)

[2022 AACI/CCAF Annual Meeting](#)

[SAVE THE DATE](#)

[October 2-4, 2022](#)

[InterContinental at the Plaza](#)

[Kansas City, MO](#)



Medical Arts Building
3708 Fifth Avenue, Suite 503
Pittsburgh, PA 15213
412-647-6111

Copyright 2022 | Association of American Cancer Institutes

FOLLOW US



Copyright 2021 | Association of American Cancer Institutes

Sent by aaaciupdate@aacr-cancer.org powered by



Try email marketing for free today!