



AACI Association of
American
Cancer Institutes

Better Together

REPORT 2024

AACI Leadership

TABLE OF CONTENTS

- 1 A Message From AACI
- 2 Member Benefits
- 3 Member Services & Education
- 6 Programs & Initiatives
- 8 Inclusive Excellence
- 10 Meetings
- 16 Awards
- 17 Communications & Publications
- 18 Public Policy
- 21 Supporters
- 25 Board of Directors
- 26 2024 Committees
- 28 2024 Members

OFFICERS

President

Robert A. Winn, MD

VCU Massey
Comprehensive Cancer Center

Immediate Past President

Caryn Lerman, PhD

USC Norris Comprehensive Cancer Center

Vice President/President-elect

Joann B. Sweasy, PhD

Fred & Pamela Buffett Cancer Center

Treasurer

David M. Gosky, MA, MBA

The Ohio State University
Comprehensive Cancer Center -
The James

Executive Director

Jennifer W. Pegher, MA, MBA

Association of American Cancer Institutes

BOARD OF DIRECTORS

Edward Chu, MD, MMS

Montefiore Einstein
Comprehensive Cancer Center

Marcia Cruz-Correa, MD, PhD

University of Puerto Rico
Comprehensive Cancer Center

Raymond N. DuBois, MD, PhD

Hollings Cancer Center
Medical University of South Carolina

Steven D. Leach, MD

Dartmouth Cancer Center
Dartmouth College

Ruben A. Mesa, MD

Atrium Health Wake Forest Baptist
Comprehensive Cancer Center

Kunle Odunsi, MD, PhD

The University of Chicago Medicine
Comprehensive Cancer Center

Yolanda Sanchez, PhD

University of New Mexico
Comprehensive Cancer Center

Robert H. Vonderheide, MD, DPhil

Abramson Cancer Center of the
University of Pennsylvania

NEW BOARD MEMBERS

B. Mark Evers, MD, FACS

UK Markey Cancer Center

Kelvin Lee, MD

Indiana University Melvin and Bren Simon
Comprehensive Cancer Center

Thomas A. Sellers, PhD, MPH

OHSU Knight Cancer Institute

The Association of American Cancer Institutes (AACI) represents over 100 premier academic and freestanding cancer centers in the United States and Canada. AACI is accelerating progress against cancer by enhancing the impact of academic cancer centers and promoting cancer health equity.

Photo credits: Page 2, Randy Belice (top), Kamil Krzaczyński (bottom); pages 6, 12-16, 22-23, Randy Belice; pages 10-11, Kamil Krzaczyński; page 18, 20 (Illinois and Wittman), 21, Tyrone Bowie.

Report design: Tara Taylor

A Message From AACI



Dr. Robert A. Winn
AACI President



Jennifer W. Pegher
AACI Executive Director

In a thriving ecosystem, each element plays an essential role in the group's overall success. In 2024, AACI helped advance the goals of the oncology ecosystem through collaborations with cancer centers and other stakeholders from government and industry.

In the first full year of his AACI presidency, Dr. Robert A. Winn, director of VCU Massey Comprehensive Cancer Center, focused on building and enhancing relationships. Throughout 2024, Dr. Winn and members of the Inclusive Excellence steering committee met with leadership from Historically Black Colleges and Universities and other Minority-Serving Institutions, developed benchmarks for global oncology programs and partnerships, and advocated for patient navigation services.

AACI leveraged the Inclusive Excellence Initiative to strengthen existing partnerships and foster new connections, facilitating meetings between cancer center directors and National Cancer Institute (NCI) leadership and initiating conversations with organizations dedicated to patient navigation; cancer center operations; and diversity, equity, and inclusion (DEI).

In conjunction with the 2024 AACI/CCAF Annual Meeting in Chicago, AACI partnered with the American Cancer Society and the Cancer Center DEI Network to host the third DEI Summit. The event drew over 200 participants, more than doubling the number of 2023 attendees. The 16th Annual Clinical Research Innovation (CRI) Meeting also set new records, with 600 registrants and 153 abstract submissions.

Keeping pace with the rapidly changing oncology landscape, AACI rebranded its CAR T Initiative the Cellular Therapy Initiative to reflect advances in cellular therapies.

AACI continues to provide educational and networking opportunities to members through events like the Leadership Diversity and Development Workshop and the New Cancer Center Directors Meeting, as well as listservs, webinars, and member surveys. To support these activities and other projects, AACI is growing, with two new employees joining the team in 2024.

The year ahead promises even more opportunities for connection and growth. In January, AACI will host the Catchment Area Data Excellence (CADEx) Conference in Coronado, CA, expanding on the first-of-its-kind catchment area data conference hosted by VCU Massey in 2023. We are also excited to introduce a refreshed website with new features for members, including a comprehensive library of educational resources.

As a new U.S. president prepares to take office in 2025, we are deeply grateful to President Biden and his administration for their ongoing commitment to “ending cancer as we know it.” AACI looks forward to building on the progress of the Cancer Moonshot with the incoming administration and the 119th Congress, and sustaining relationships with the NCI, National Institutes of Health, and other government agencies.

We also look forward to continued collaboration with AACI's cancer center members and corporate and nonprofit partners. Thank you for all you do for patients, their families, and your communities. All of you play an important role in strengthening the oncology ecosystem. Over 100 cancer centers strong, AACI is here to connect you and ensure that we all work better together.

Better Together



Members of the AACI Board of Directors

AACI is committed to accelerating progress against cancer, promoting cancer health equity, and developing innovative programming to support the diverse interests of its members.

The benefits of AACI membership are institutional – that means they're available to all cancer center employees. The membership benefits below illustrate the many ways AACI is enhancing the impact of academic cancer centers.

Thank you for all you do for patients, their families, and your communities. AACI is here to help you work **better together**.

AACI MEMBER BENEFITS

Member Services, Communication & Education

Navigate the oncology ecosystem

Surveys – Six in 2024

Job Listings - Exclusive to AACI member centers

Meeting Announcements

AACI Commentary - Monthly editorial series, authored by oncology leaders and experts

AACI Update - Monthly newsletter, distributed to over 5,000 contacts

Webinars - Eight in 2024 on a diverse range of subjects

Listservs - Over 1,500 unique users in eight focus areas

Programs & Initiatives

Improve cancer center operations

Clinical Research Innovation
Physician Clinical Leadership Initiative
Cellular Therapy Initiative
Inclusive Excellence Initiative

Ongoing projects include cancer center and department benchmarking, enhancing catchment area data monitoring, standardizing education, expanding clinical trial access, and examining cancer service lines.

Meetings

Connect with colleagues

Leadership Diversity and Development Workshop

Nearly 100 attendees from 85 cancer centers in 2024

17th Annual AACI Clinical Research Innovation (CRI) Meeting

Over 600 attendees in 2024;
153 abstracts submitted

New Cancer Center Directors Meeting

Held in conjunction with the AACI/CCAF Annual Meeting

AACI/CCAF Annual Meeting

Attended by over 500 cancer center directors and administrators, industry partners, and government agency officials in 2024

Diversity, Equity, and Inclusion (DEI) Summit

Hosted in partnership with the American Cancer Society and the Cancer Center DEI Network

Public Policy

Support cancer-focused legislation

AACI/AACR Hill Day

Washington, DC

Participants include cancer center directors, researchers, oncologists, and cancer survivors.

Semiannual meetings, monthly calls, and visits with legislators

Public Policy Resource Library
Legislation Tracker



Camilla Frost-Brewer, director, Office of Diversity, Equity, and Inclusion, The University of Chicago Medicine Comprehensive Cancer Center

Member Services & Education

Surveys

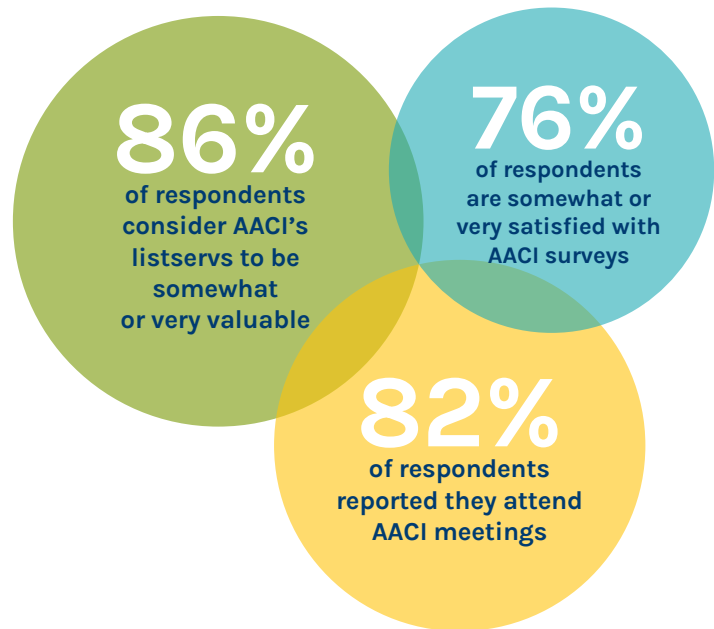
AACI surveys are designed to gather critical insights, facilitate knowledge sharing, and enhance the collective impact of member cancer centers. Key benefits of the surveys include:

- **Benchmarking and Best Practices:** Access data to help compare your center's performance with that of peer institutions and identify best practices.
- **Data-Driven Decision Making:** Use the survey findings to inform strategic planning and improve operational efficiency.
- **Community and Collaboration:** Foster stronger collaborations and share knowledge with other AACI member centers.
- **Immediate Access:** Responding centers have access to anonymized data prior to publication.

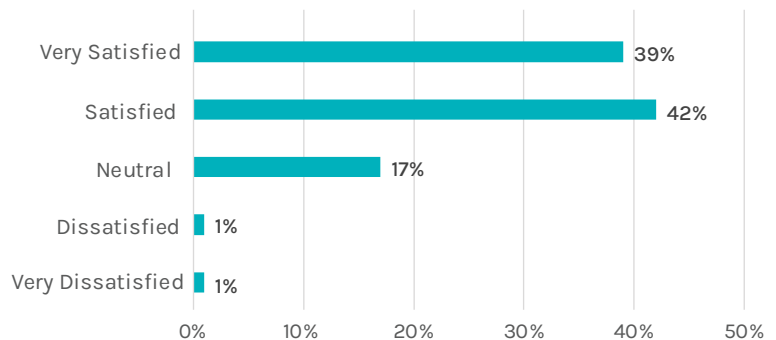
Membership Satisfaction Survey

The association conducted a member satisfaction survey in 2024 that was completed by 188 respondents from 84 cancer centers. The year also saw a compensation survey and an academic time survey, the latter circulated by AACI's Physician Clinical Leadership Initiative, with the Clinical Research Innovation program revamping its benchmarking questionnaire.

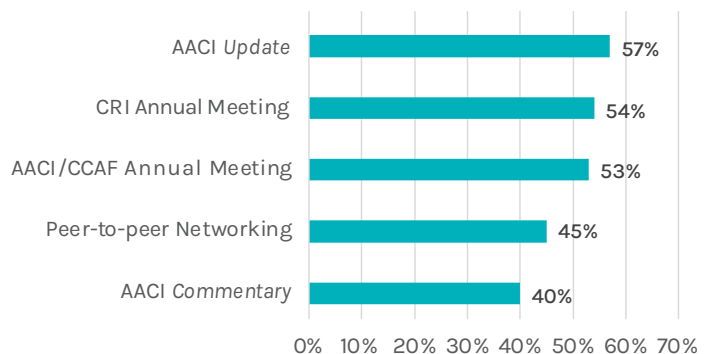
*188 respondents
from 84 cancer centers
participated in the
AACI Member
Satisfaction Survey*



Satisfaction With Membership Benefits



Most Utilized Benefits



Member Services & Education

Webinars

AACI expanded its webinar offerings in 2024 with the introduction of a webinar series suggested by the Catchment Area Research Data Science (CARDS) listserv community. CARDS webinars are dedicated to discussions around cancer center data collection, analysis, and utilization. The CARDS listserv and webinars are aimed at individuals working in community outreach, biostatistics, and cancer informatics at AACI cancer centers. The free webinars are held quarterly and are open to all AACI members.

In 2024 AACI hosted the following webinars:

CARDS Webinars

Exploring U.S. Neighborhood-Level Cancer Risk Factor Datasets

Moderators: **Todd Burus**, UK Markey Cancer Center; **Dr. Sandi Pruitt**, Peter O'Donnell School of Public Health and Simmons Comprehensive Cancer Center, UT Southwestern Medical Center

Panelists: **Dr. Yan Wang**, PLACES, Epidemiology and Surveillance Branch; **Hua Lu**, PLACES, Epidemiology and Surveillance Branch; **Ben McKenzie**, Geospatial Research, Analysis, and Services Program (GRASP), CDC/ATSDR; **Lauren Frelander**, GRASP, CDC/ATSDR; **Dr. Debby Oh**, UCSF Helen Diller Family Comprehensive Cancer Center, UCSF Health Atlas

Leveraging Spatial Methods to Improve Service to the Catchment Area

Moderators: **Dr. Peter DelNero**, UAMS Winthrop P. Rockefeller Cancer Institute; **Dr. Christopher McNair**, Sidney Kimmel Comprehensive Cancer Center at Jefferson

Panelists: **Tesla DuBois**, Fox Chase Cancer Center, Temple Health; **Dr. Michael R. Desjardins**, Johns Hopkins Bloomberg School of Public Health; **Dr. Changzhen Wang**, University of Alabama



“Not Your Typical Wellness Talk” webinar presenters, clockwise from upper left: Drs. Quan Ly, Steven Wengel, and Sarah Richards

Communicating Catchment Area Data Using R

Moderators: **Todd Burus**, UK Markey Cancer Center; **Dr. Christopher McNair**, Sidney Kimmel Comprehensive Cancer Center at Jefferson

Presenters: **Daniel Antonio**, Robert H. Lurie Comprehensive Cancer Center of Northwestern University; **Sam Pepper**, The University of Kansas Cancer Center; **Phil Bowsher**, Posit

Unveiling Insights: Using Data to Guide Catchment Area Strategy

Moderator: **Todd Burus**, UK Markey Cancer Center

Presenters: **Dr. Este Geraghty**, and **Caitlin Marin**, Esri; **Dr. Christopher McNair**, Sidney Kimmel Comprehensive Cancer Center at Jefferson; **Dr. Nathanael Stanley**, Moffitt Cancer Center

Physician Clinical Leadership Initiative Webinars

Understanding Cancer Care Delivery in Diverse Environments

Panelists: **Dr. Julia White**, The University of Kansas Cancer Center; **Dr. Kathie-Ann Joseph**, NYU Grossman School of Medicine/NYU Langone Health; **Dr. Gary Doolittle**, Masonic Cancer Alliance at the University of Kansas School of Medicine

On the Frontlines of Cancer Care: Exploring Urgent Care Models in Oncology – Supported by Advarra

Moderator: **Dr. Theresa L. Werner**, Huntsman Cancer Institute at the University of Utah

Presenters: **Dr. William Dunson**, Huntsman Cancer Institute at the University of Utah; **Kinsey Wimmer**, University of Colorado Cancer Center; **Dr. Elizabeth Jewell**, Memorial Sloan Kettering Cancer Center; **Dr. David Brauer**, Masonic Cancer Center, University of Minnesota

Not Your Typical Wellness Talk

Presenters: **Dr. Quan Ly**, Fred & Pamela Buffett Cancer Center; **Dr. Sarah Richards**, University of Nebraska Medical Center and Nebraska Medicine; **Dr. Steven Wengel**, University of Nebraska Medical Center

Other Webinars

Reimagining Community Engagement and Equity in Cancer: A Virtual Conversation With Two Presidents

A conversation between Association of Cancer Care Centers President **Dr. Nadine J. Barrett** and AACI President **Dr. Robert A. Winn**.

AACI/SIRUM Webinar | Leveraging Surplus Medicine for Good

Presenter: **Dr. George Wang**, SIRUM

Listservs

AACI listservs allow cancer center members to network with their peers and ask questions about specific topics or roles. Roundtable meetings, webinars, and other projects have been developed from robust listserv discussions.

Listservs are for AACI cancer center members only, and subscribers must have a cancer center email address to join.

Clinical Research Innovation (CRI)

The CRI listserv is AACI's largest and most active listserv, with more than 1,200 members from 90 AACI cancer centers. It is a valuable resource for all clinical trials office (CTO) staff to discuss best practices for clinical research.

CTO Medical Directors

This role-based listserv provides a forum for clinical trials office (CTO) medical directors to discuss the challenges they experience and creates opportunities for members to mentor other medical directors. Only CTO medical directors or those with a similar job title may join (typically one from each center), but exceptions can be made at AACI's discretion.

CTO Administrative Directors

This role-based listserv allows CTO administrative directors to share best practices and benefit from mentorship. Up to three CTO administrative directors from each cancer center may join. Additional cancer center subscriptions may be requested.

Community Outreach and Engagement (COE)

Members frequently share webinars, seminars, and in-person events that support various aspects of COE within their cancer centers' catchment areas.

Catchment Area Research Data Science (CARDS)

This listserv provides a forum for members to ask questions, make announcements, and seek collaboration on topics related to catchment area research and data science.

Associate Directors for Clinical Research (ADCR)

Like the CTO medical and administrative director listservs, this listserv offers a platform for ADCRs to network, mentor, and openly discuss their roles. Only ADCRs may join this listserv (typically one from each center).

PRM/DSM Committees

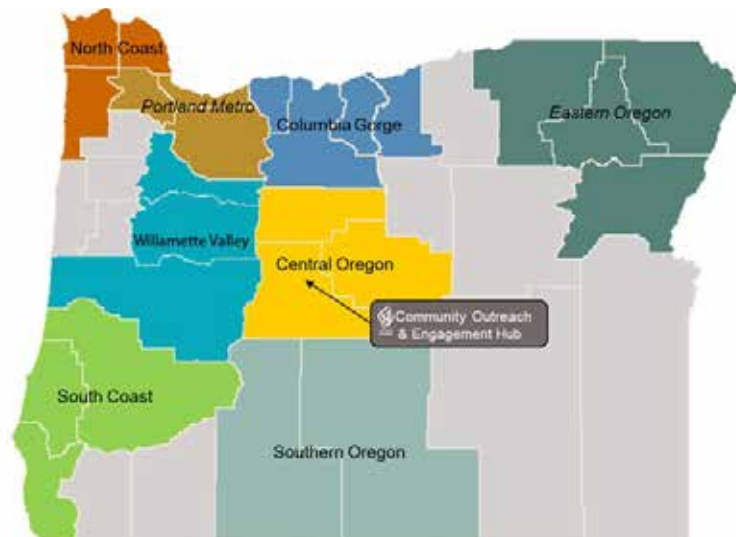
Discussions focus on Protocol Review and Monitoring (PRM) and Data and Safety Monitoring (DSM) topics such as structure, benchmarking, responsibilities, and more related to the role of these committees within cancer center research departments.

Roundtable meetings, webinars, and other projects have been developed from robust AACI listserv discussions.

Clinical Trials Reporting Program (CTRP) Administrators

This listserv fosters community and facilitates discussions among CTRP administrators or similarly titled positions at various institutions. Members share experiences and identify common challenges for potential action.

Community Outreach, Research and Engagement at Oregon Health & Science University



Participants in AACI's COE listserv discussed a variety of topics in 2024, including the impact of community advisory boards, cancer screening efforts, and tools like this map for tracking outreach and engagement activities.

Programs & Initiatives

IMPROVING CANCER CENTER OPERATIONS



Clinical Research Innovation Steering Committee

Pictured left to right: AACI Executive Director Jennifer W. Pegher, Dina Aziz, Matthew Kovak, Dr. Margaret Kasner, Dr. Rachna Schroff, Angela Fritsche, CRI Steering Committee Chair Dr. Thomas J. George, Frances Brogan, Angela Campbell, Dr. Eneida Nemecek, Dr. Wendy Law, Dr. Muhammad Furqan, Dr. Arcadia Cruz Photo credit: Randy Belice

Cancer clinical trials play a crucial role in prevention, early detection, treatment, and, ultimately, cancer cures.

AACI's wide range of programs and initiatives advances the objectives of cancer centers by promoting broad recognition of the cancer center network, educating policymakers, and fostering partnerships between and among cancer centers and like-minded organizations to improve the overall quality of cancer care.

CLINICAL RESEARCH INNOVATION

Cancer clinical trials play a crucial role in prevention, early detection, treatment, and, ultimately, cancer cures. Recognizing that clinical trials in the U.S. face administrative and staffing barriers, regulatory constraints, increasing costs, and lagging patient accrual, AACI established the Clinical Research Initiative (CRI) in 2009, later renaming the program Clinical Research Innovation.

CURRENT PROJECTS

CTO Benchmarking Working Group

The clinical trials office (CTO) benchmarking survey manuscript, "North American Cancer Center Clinical Research and Benchmarking in the Postpandemic Era," was published in *JCO Oncology Practice* in July. The survey working group revised the 2023 survey and redistributed it to AACI membership in September to track the growth of CTOs and identify areas of concern.

CRI Education and Operations Subcommittee

The subcommittee published a checklist for onboarding, training, and offboarding new principal investigators to clinical research or the institution. It is working on standardizing quality assurance metrics and discussing acuity tools and effort tracking resources.

AACI Corporate Roundtable Stipends and Reimbursement Task Force

Selected task force members and AACI staff have joined the Equitable Access to Clinical Trials (EACT) project to help eliminate financial barriers for patients.

Clinical Trials Management System (CTMS) Task Force

CTMS task force members met with Advarra leadership at the 16th Annual AACI CRI Meeting to discuss ongoing concerns regarding OnCore's transition to cloud storage.

AACI Financial Disclosure and Conflict Management Task Force

This newly formed task force is comprised of regulatory leaders and clinical research managers tasked with identifying common regulatory burdens, streamlining data collection tools and timepoints, and harmonizing workflows for collecting financial disclosures.

CTO Medical Directors Forum, CTO Administrative Directors Forum, and Associate Directors of Clinical Research Forum

The CTO administrative and medical directors continue to hold roundtables every other month and hold joint discussions quarterly. The Associate Directors of Clinical Research Forum meets quarterly.

Protocol Review and Monitoring (PRM) and Data and Safety Monitoring (DSM) committees

Led by members from Stony Brook Cancer Center, Memorial Sloan Kettering Cancer Center, University of Florida Health Cancer Center, and The Ohio State University Comprehensive Cancer Center, the committees meet every other month to share best practices and operational challenges.

Physician Clinical Leadership Initiative (PCLI)

PCLI's 12th annual meeting, held during the 2024 AACI/CCAF Annual Meeting, featured a panel discussion on artificial intelligence and big data. It was moderated by **Dr. Christopher Lieu** with panelists **Dr. Warren Kibbe** and **Travis Zack**.

PCLI Steering Committee members **Dr. Paula Fracasso**, **Stephanie Lim**, **Lee Wilke**, and **Nicole Simone** are finalizing a manuscript on the results of the Cancer Service Line (CSL) survey. A quarterly CSL Roundtable was created to continue conversations and encourage networking among CSL leaders. Two working groups are drafting formal definitions for CSL roles and responsibilities and metrics. Committee members **Dr. Karen L. Reckamp**, **Carrie Lee**, **Paula Fracasso**, **Nicole Simone**, and **Julie Ann Sosa** revised the 2018 AACI Protected Time Survey with the goal of submitting a manuscript based on the results for publication. The survey was shared with AACI's membership in August.

Cellular Therapy Initiative (CTI)

Recognizing the evolution of immunotherapies over the past several years, the AACI CAR T Steering Committee voted in 2024 to change the name of the CAR T Initiative to the Cellular Therapy Initiative. Along with the new name, the steering committee is expanding to include experts in other cellular-based therapies. It has also designed a series of narrated educational slide decks to help increase patient referrals for CAR T therapy in the community, along with a webinar series promoting cellular therapy best practices and strategies for overcoming barriers and connecting with similar organizations.



Dr. Karen L. Reckamp
PCLI Steering Committee Chair



Dr. Peter Riedell
CTI Steering Committee Chair

Inclusive Excellence



Dr. Robert A. Winn's AACI presidential initiative develops and promotes inclusive excellence by examining methods for AACI members to foster partnerships with other institutions and organizations regionally, nationally, and globally.

A wide range of Inclusive Excellence Initiative outreach efforts were organized in five primary areas:

Community Cancer Centers, Historically Black Colleges/Universities, and Minority-Serving Institutions

In June, AACI and the Association of Cancer Care Centers (ACCC) co-hosted a webinar, "Reimagining Community Engagement and Equity in Cancer." Dr. Winn and ACCC President **Dr. Nadine Barrett** discussed what it takes for the cancer community to effect real change, the science behind outreach engagement, and how individuals can contribute to the conversation in their communities.

In September, AACI met with **Dr. Carla Williams**, interim director, Howard University Cancer Center. More HBCU/MSI visits are planned for 2025.

Global Oncology

The Global Oncology Working Group, chaired by **Dr. Patrick Loehrer**, held meetings in February, March, May, June, and September. Meeting participants included the National Cancer Institute (NCI) Center for Global Health and representatives from the U.S., Kenya, and Mexico. Six focus groups are planned: global oncology program leaders; low- and middle-income countries (LMIC) leaders and partners; trainees; organizations and societies; and cancer center directors.

Patient Navigation

Dr. Winn met with the Office of the First Lady in December 2023 and January 2024 to discuss plans for deep integration of patient navigation in cancer care. In November, AACI participated in a White House Cancer Moonshot event, with Dr. Winn moderating a panel discussion—"Paving the Way for Navigation at Scale"—that convened leading experts, including former AACI board member **Dr. Ruben A. Mesa**.

The 2024 AACI/CCAF Annual Meeting featured a panel discussion on the future of patient navigation. In addition, AACI and the American Cancer Society are planning a webinar on updates to patient navigation Medicare billing codes.

Enhanced Partnerships

Dr. Winn hosted small group meetings with NCI Director **Dr. W. Kimryn Rathmell** and cancer center directors. The meetings are strategically organized around cancer center characteristics — freestanding, small to midsize matrix, large matrix, basic science, and emerging centers. In addition, AACI partnered with the Cancer Center DEI Network and the American Cancer Society to conduct a Diversity, Equity, and Inclusion (DEI) Summit, in conjunction with the AACI/CCAF annual meeting.

Collaborations

Intentional conversations and connections were realized this year with the organizations highlighted above, as well as with the Academy of Oncology Nurse & Patient Navigators, the Association of Cancer Center Administrators, the American Association for Cancer Research, and Black in Cancer.



AACI President Dr. Robert A. Winn with, from top to bottom: Drs. Harold Freeman, Nadine Barrett, and Carla Williams.



L-R: Dr. Ruben A. Mesa, Danielle Brown, Blake Hoegger, Dr. Robert A Winn



Dr. Robert A. Winn and AACI Executive Director Jennifer W. Pegher meet with Rep. Abigail Spanberger (D-VA).



Dr. Vetta Sanders Thompson participates in a breakout session at the DEI Summit.

With 72 AACI member centers represented, the DEI Summit drew over 200 cancer center leaders, researchers, and administrators.

Diversity, Equity, and Inclusion (DEI) Summit

In conjunction with the AACI/CCAF annual meeting in October, AACI partnered with the American Cancer Society and the Cancer Center DEI Network to host the Diversity, Equity, and Inclusion (DEI) Summit. With 72 AACI cancer centers represented, the summit drew over 200 cancer center leaders, researchers, and administrators to discuss how their cancer centers are navigating policy changes related to DEI and leveraging institutional commitment to DEI initiatives, while identifying opportunities for collaboration.

Specific sessions included a discussion on the value of integrating three components of the National Cancer Institute's (NCI) Cancer Center Support Grant: the Plan to Enhance Diversity; Community Outreach and Engagement; and Cancer Research Training and Education Coordination. A "fireside chat" examining the critical role of cancer center leadership in advancing equity featured three cancer center directors: **Dr. Candace S. Johnson**, Roswell Park Comprehensive Cancer Center; AACI Vice President/President-elect **Dr. Joann B. Sweasy**, Fred & Pamela Buffett Cancer Center; and **Dr. Naoto Tada Ueno**, University of Hawai'i Cancer Center, University of Hawai'i at Mānoa.

Leadership Diversity and Development Workshop

With an eye toward elevating the next generation of oncology leaders, AACI was honored to host nearly 100 colleagues from 85 cancer centers at the 2024 AACI Leadership Diversity and Development Workshop. Attendees reflected the diverse pool of talented emerging leaders who are accelerating progress against cancer at AACI's member institutions – 71 percent of attendees identified as female, 31 percent were Black or African American, and 18 percent were Hispanic.

Keynote talks were delivered by **Dr. Karen Winkfield**, executive director, Meharry-Vanderbilt Alliance, and **Dr. Ted A. James**, surgical oncologist and cancer center medical director, Dana-Farber Cancer Institute and Beth Israel Deaconess Medical Center.

A panel discussion on navigating the pathway to cancer center leadership featured **Dr. Elisa Rodriguez**, vice president and associate director of diversity, equity and inclusion, Roswell Park Comprehensive Cancer Center; **Dr. Yolanda Sanchez**, director and CEO, University of New Mexico Comprehensive Cancer Center; AACI Vice President/President-elect **Dr. Joann B. Sweasy**, director, Fred & Pamela Buffett Cancer Center; and AACI President **Dr. Robert A. Winn**, director, VCU Massey Comprehensive Cancer Center. The discussion was moderated by AACI Executive Director **Jennifer W. Pegher**.

AACI extends its deep appreciation to **Merck**, **Bristol Myers Squibb**, and **J&J Innovative Medicine**, for their generous support of the workshop and commitment to training future cancer center leaders.



Dr. Patricia A. Robinson speaks at the Diversity, Equity, and Inclusion (DEI) Summit.



Patient advocate Anne Marie Mercurio delivers a keynote address at the 16th Annual AACI CRI Meeting.



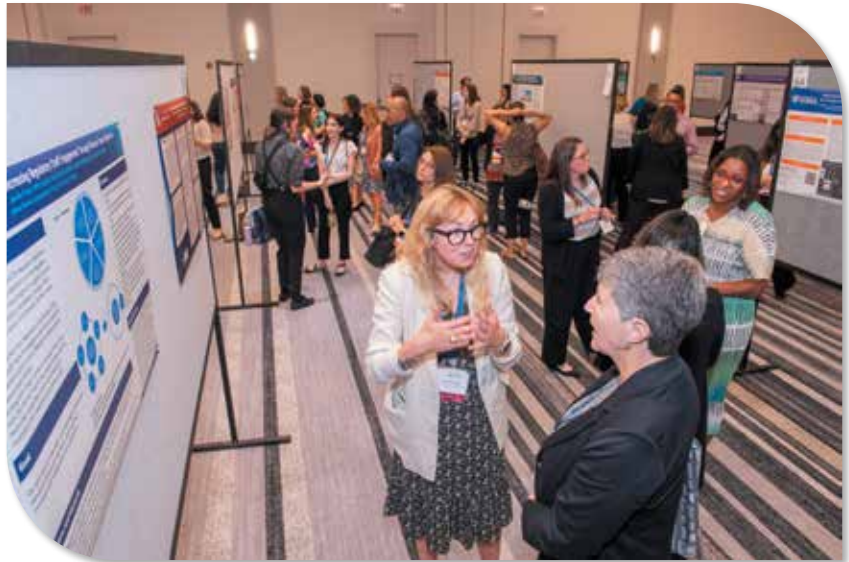
Dr. Muhammad Furqan moderates a panel discussion at the 16th Annual AACI CRI Meeting.

16th Annual Clinical Research Innovation (CRI) Meeting

AACI convened its 16th Annual Clinical Research Innovation (CRI) Meeting in June. With a focus on clinical trial office operations, the signature event drew over 600 attendees with 153 abstracts submitted for presentation.

In a keynote address, patient advocate **Anne Marie Mercurio** emphasized the importance of building patient partnerships: “When you listen [to patient advocates] early in the process, maybe there are things that those of us who have walked the path can show you.”

Reprising her 2023 AACI/CCAF Annual Meeting Distinguished Scientist keynote talk for an audience of clinical research professionals, **Dr. Patricia LoRusso**, of Yale Cancer Center, Yale School of Medicine, shared the inspiring story of her path to clinical research. Her presentation highlighted the impact of family and mentor relationships on her professional success and personal growth.



Abstract and Poster Presentations

AACI received a record-breaking 153 abstracts for presentation at the 16th Annual CRI Meeting, each highlighting important research in the field of cancer clinical trials. The winning abstracts were presented by **Alec Shultz**, Holden Comprehensive Cancer Center, University of Iowa; **Whitney Cunningham**, UK Markey Cancer Center; and **Katelyn Gauger**, Medical College of Wisconsin Cancer Center.

FIRST PLACE:

The Significance of Financial Audits in Sustaining Clinical Trial Operations Amidst Shifting Industry Trends

A. Shultz, S. Al-Tabar, J. Gallagher, A. Pratt
Holden Comprehensive Cancer Center
University of Iowa

SECOND PLACE:

From Surviving to Thriving: How Culture and Training Transformed the Markey Cancer Center Clinical Research Office

W. Cunningham, T. Roberts, M. Gosky
UK Markey Cancer Center

THIRD PLACE:

Enhanced Interdisciplinary Communication Between Inpatient Clinical Staff and the Research Team

K. Gauger, K. Hartman, A. Grossman, T. Rudnitzki, K. Schroeder, J. Narewski, A. Baus, L. Ferguson, P. Eppele, S. Abedin
Medical College of Wisconsin Cancer Center



Alec Shultz,
Holden Comprehensive
Cancer Center



Whitney Cunningham,
UK Markey Cancer Center



Katelyn Gauger,
Medical College of Wisconsin
Cancer Center



Meetings

CONNECTING WITH COLLEAGUES

2024 AACI/CCAF Annual Meeting

More than 500 cancer center directors and administrators, industry partners, and representatives of government agencies gathered in Chicago for the 2024 AACI/CCAF Annual Meeting.

Following meetings of the AACI Board of Directors and Corporate Roundtable, the conference launched with a compelling keynote by **Dr. Lawrence Einhorn**, Indiana University School of Medicine, who discussed his use of innovative therapies to dramatically improve the cure rate of testicular cancer, as well as recent progress in oncology, including the development of personalized, targeted therapies. Dr. Einhorn stressed the importance of the oncology workforce, noting, "It has to do with people more than drugs It's the optimism and the brilliant minds that go into the field that are moving the field forward."

The keynote was followed by sessions on the applications of artificial intelligence and big data in cancer care and research and bioengineering in cancer, including advancements in areas such as imaging, cancer detection and therapy, bioinformatics, and nanotechnology.

Day 2 of the program opened with a session that delved into the impact of cancer on patients' mental health, moderated by **Loriana Hernández-Aldama**, a cancer survivor, award-winning journalist, and steering committee member for Inclusive Excellence, Dr. Robert A. Winn's AACI presidential initiative.

A look at the history and future of oncology patient navigation was moderated by Patient Advocate Foundation Chief Executive Officer



L-R: Dr. John D. Carpten, Kevin Williams, Dr. Brian D. Gonzalez, Dr. Robert A Winn

Dr. Alan Balch and featured **Dr. Harold P. Freeman**, who established the first patient navigation model for patients with cancer, and **Dr. Shanthi Sivendran** of the American Cancer Society. Dr. Freeman characterized patient navigation as a tool for health equity, adding, "People shouldn't die of cancer because they're poor ... or because they're Black."

Loriana Hernández-Aldama moderates a panel discussion on mental health and cancer at the 2024 AACI/CCAF Annual Meeting.





Attendees at the 2024 New Cancer Center Directors Meeting

Innovation and technology at AACI basic science centers were topics of discussion with directors from four National Cancer Institute (NCI)-Designated Basic Laboratory Cancer Centers: **Dr. Andrew Mesecar**, Purdue University Institute for Cancer Research; **Dr. Reuben Shaw**, Salk Institute Cancer Center; **Dr. David Tuveson**, Cold Spring Harbor Laboratory Cancer Center; and **Dr. Matthew Vander Heiden**, Koch Institute for Integrative Cancer Research at MIT.

On the meeting's final day, **Dr. Krzysztof Ptak** provided an update on the NCI's Office of Cancer Centers, focusing on the Plan to Enhance Diversity component of the Cancer Center Support Grant and the NCI-Designated Cancer Centers Directors' Retreat. Topics discussed at the retreat included transdisciplinary innovation and establishing national networks to accomplish shared goals.

Dr. W. Kimryn Rathmell closed the meeting with the NCI Director's Report, in which she outlined the framework of the National Cancer Plan, provided updates on recent progress in cancer research, and called for cancer centers to better communicate the value of their work.

New Cancer Center Directors Meeting

A dozen new cancer center leaders attended AACI's New Cancer Center Directors Meeting, held in October preceding the AACI/CCAF annual meeting. The program featured 16 speakers in a series of panel discussions. To prepare recently minted directors for their leadership roles, experienced directors offered their perspectives on challenges—and opportunities—encountered by all centers.



Dr. Krzysztof Ptak

Awards



Dr. Steven D. Leach (back row, third from right), director of Dartmouth Cancer Center, with colleagues from Friends of Dartmouth Cancer Center and the Prouty



Dr. Paula D. Bos

AACI presented three awards at its 2024 AACI/CCAF Annual Meeting, recognizing outstanding cancer research achievement and transformational support for the work of member cancer centers.

The AACI awards program was established in 2002 with the Distinguished Scientist Award. The Champion for Cures Award was introduced in 2018, followed by the Cancer Health Equity Award in 2021. A Public Service Award has been presented to Members of Congress in alternating years since 2003.

AACI Distinguished Scientist Award

Dr. Paula D. Bos, an associate professor of pathology and the co-leader of the Cancer Biology Program at VCU Massey Comprehensive Cancer Center, received AACI's Distinguished Scientist Award. A major focus of Dr. Bos's research is the identification of tumor-promoting mechanisms by regulatory Treg cells, a subset of CD4 lymphocytes prominently found in tumors and associated with poor prognoses.

AACI Cancer Health Equity Award

The Cancer Health Equity Award was presented posthumously to **Dr. Edith P. Mitchell**, with her daughter, Dale Edith Hobbs, accepting the award on her behalf.

Prior to her passing in January 2024, Dr. Mitchell served as enterprise vice president for cancer disparities at Sidney Kimmel Comprehensive Cancer Center (SKCCC) at Jefferson, director of the Center to Eliminate Cancer Disparities and associate director for diversity affairs at SKCCC, and clinical professor of medicine and medical oncology at Thomas Jefferson University's Sidney Kimmel Medical College.

AACI Champion for Cures Award Friends of Dartmouth Cancer Center and the Prouty

received AACI's Champion for Cures Award. Since its founding in 1977, Friends of Dartmouth Cancer Center (the Friends) has raised more than \$65 million to support cancer research and patient and family support services. The group's signature fundraiser is the Prouty, a family-friendly event combining cycling, walking, rowing, golf, and other sports. The Friends raises roughly \$8 million each year through small gifts from more than 12,000 individual donors.



Dr. Edith P. Mitchell's daughter, Dale Edith Hobbs, with Dr. Andrew E. Chapman, director, Sidney Kimmel Comprehensive Cancer Center at Jefferson

Communications & Publications

To enhance its online presence and better promote its work on behalf of member centers, AACI engaged Green Dot Communications to develop a comprehensive social media plan. With the firm's help, AACI launched an Instagram account and has exceeded past social media performance with more consistent posting and diversified content.



Becky Greiss and Jim Goodwin, Siteman Cancer Center, with AACI Communications Director Chris Zurawsky (center) at the 2024 NACCCDO-PAMN Conference in Salt Lake City

Along with our newsletter, we also offer AACI *Commentary*, a monthly editorial platform for cancer center leadership. Commentaries in 2024 highlighted barriers to clinical trial participation, cellular therapeutics, global oncology, pediatric cancer, and oncology patient navigation.

Suggestions from our members for potential 2025 *Commentary* topics and authors are always welcome.

AACI was proud to sponsor the 2024 NACCCDO-PAMN Conference in Salt Lake City, hosted by Huntsman Cancer Institute at the University of Utah.

The meeting brings together development, marketing, communications, and public relations professionals from National Cancer Institute-Designated Cancer Centers.





AACI Government Relations Steering Committee members Peter Mackler (left) and Alex Currie

AACI/AACR Hill Day

AACI's 2024 Hill Day, co-hosted with the American Association for Cancer Research, drew 100 participants representing 27 states, including cancer center directors, researchers, oncologists, and cancer survivors. The group presented a unified voice supporting stable funding increases for the National Institutes of Health (NIH) and the National Cancer Institute (NCI).

An evening reception in the Gold Room in the Rayburn House office building included remarks by

AACI Cancer Research Ally Award recipient Senator **Dick Durbin (D-IL)**, who shared the moving story of how cancer has impacted his life, including losing his father to lung cancer. Representative **Kat Cammack (R-FL)** also delivered remarks. Representative **Rob Wittman (R-VA)** received a Cancer Research Ally Award at an in-person meeting the next day.

Three recipients of AACI's Hill Day Scholarship were among the patient advocates in attendance. Overall, AACI and AACR hosted 10 survivor advocates in Washington. They helped highlight the far-reaching impact of cancer and underscored the importance of continued funding for the NIH and the NCI.



University of Illinois Cancer Center Director Dr. Jan Kitajewski (left) presents the Cancer Research Ally award to Sen. Dick Durbin (D-IL).

In these challenging times for federal funding, AACI's primary goal is to encourage Congress to pass a budget each year that provides robust, predictable funding for cancer research.

Despite proposals in 2024 by the House Energy and Commerce Committee to consolidate NIH institutes and centers, and the shifting landscape following the general election in November, the NCI has fared reasonably well in an era where the NIH faces more scrutiny. Nevertheless, it remains imperative that we continue to emphasize the importance of our work to lawmakers.

The specific federal budget "asks" for Fiscal Year 2025 were \$51.3 billion for the NIH—an increase of \$4.2 billion—and at least \$7.934 billion for the NCI. With NCI's grant success rate lagging that of other institutes, it will be critical to fight for this large increase.

AACI's increasingly active and effective public policy advocacy included numerous visits to the nation's capital in 2024 to meet with congressional leaders and other government officials.

The spring Government Relations Forum featured a presentation on patient navigation by **Anabella Aspiras**, assistant director for engagement, Cancer Moonshot.

In June, AACI participated in a congressional briefing to address the critical issue of insurance coverage for oral anticancer medications.

Later in the year, AACI President **Dr. Robert A. Winn** was a featured panelist for a congressional briefing, hosted by One Voice Against Cancer, highlighting the importance of studying cancer disparities. Dr. Winn also moderated a panel discussion on patient navigation as part of a White House Cancer Moonshot event. Panelists included AACI board member **Dr. Ruben A. Mesa**.

AACI Executive Director **Jennifer W. Pegher** and **Dr. Matthew Vander Heiden**, director of the Koch Institute for Integrative Cancer Research at MIT, attended a leadership roundtable with NIH Director **Dr. Monica Bertagnolli**. Hosted by United for Medical Research, the high-level discussion considered short- and long-term opportunities and challenges for the NIH. Pegher also met with Representative **Robert Aderholt (R-AL)**, chair of the LHHS Appropriations Subcommittee.

AACI is always eager to hear your advocacy ideas, and we encourage you to visit our Public Policy Resource Library to review legislative efforts that benefit cancer centers.

AACI Government Relations Steering Committee



Chair, Matthew Swaback
Sidney Kimmel Comprehensive Cancer Center at Jefferson



Vice Chair, Catherine Liao
*Duke Cancer Institute
Duke University Medical Center*



L-R: Jennifer W. Pegher, Dr. Monica Bertagnolli, and Dr. Matthew Vander Heiden



Public Policy

SUPPORTING CANCER-FOCUSED LEGISLATION

In these challenging times for federal funding, AACI's primary goal is to encourage Congress to pass a budget each year that provides robust, predictable funding for cancer research.



Rep. Robert Aderholt (R-AL) and Jennifer W. Pegher



The Illinois contingent, L-R: Drs. Timothy Fan, Jan Kitajewski, Shikha Jain, Mary Eileen Dolan, and Jasmin Tiro



Rep. Rob Wittman (R-VA), Dr. Robert A. Winn, and Jennifer W. Pegher





Clockwise from upper left, L-R: Dr. Hannah Hazard-Jenkins, Sen. Shelley Moore Capito (R-WV), Dr. Ashkan Emadi, Jennifer W. Pegher, and Dr. Robert A. Winn; Dr. Winn, Jill Homer Stewart, Renee Gaudette, and Rep. Rosa DeLauro (D-CT); Christine Thomas, CiCi Rojas, Rep. Jerry Moran (R-KS) and Dr. Roy A. Jensen; Rep. Blake Moore (R-UT) and Dr. Cornelia Ulrich

Supporters



AACI CRI Steering Committee member Angela Fritsche with Genentech's Dan Otap

The 2024 AACI/CCAF Annual Meeting and the 16th Annual Clinical Research Innovation (CRI) Meeting provided opportunities for supporters to interact with AACI members and representatives from cancer research-related organizations.

Supporters and exhibitors promoted their products and services to hundreds of meeting attendees, including cancer center directors, executive administrators, and leaders of clinics, laboratories, and specialized research facilities. AACI received support in 2024 for its events and programs from:

- Actalent
- Adminformatics
- Advarra
- American Society of Clinical Oncology
- Bristol Myers Squibb
- Caris Life Sciences
- Cognizant
- Deep 6 AI
- ECG Management Consultants
- Flatiron
- Florence
- Genentech
- Gilead
- Huron
- IgniteData
- InfoReady
- Inspirata
- J&J Innovative Medicine
- LeanTaaS
- Lilly
- Medidata
- Merck
- Mint Medical
- nCartes
- Novartis
- Pfizer
- Prevent Cancer Foundation
- RealTime Software Solutions
- Slope
- STAT Informatic Solutions
- The Ohio State University Comprehensive Cancer – The James

- Triomics
- UVA Cancer Center
- Varian Medical Systems
- VCU Massey Comprehensive Cancer Center
- Veeva Systems
- Verily Life Sciences
- WCG
- Yunu, Inc.

Exhibitors at the 16th Annual CRI Meeting

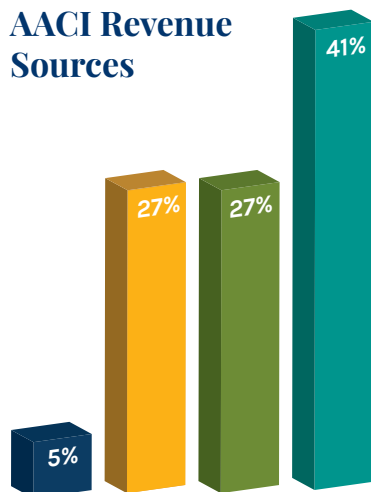
- Actalent
- Advarra
- CancerLinQ, A ConcertAI Initiative
- Florence
- Huron
- IgniteData
- RealTime Software Solutions
- Slope
- Veeva Systems
- WCG
- Yunu, Inc.

Exhibitors at the 2024 AACI/CCAF Annual Meeting

- Advarra
- Caris Life Sciences
- Deep 6 AI
- Florence
- Huron
- IgniteData
- InfoReady
- Inspirata
- LeanTaaS
- RealTime Software Solutions
- Merck
- Mint Medical
- nCartes
- STAT Informatic Solutions
- VCU Massey Comprehensive Cancer Center
- Verily
- Yunu, Inc.

AACI appreciates the valuable assistance these companies provide in fulfilling the association's mission of enhancing the impact of leading academic cancer centers.

AACI Revenue Sources



- 5%** Grants (CME & Non CME)
- 27%** Meeting Registrations
- 27%** Corporate Roundtable, Sustaining Members, Exhibitors, Other Support
- 41%** Membership Dues



Supporters



A Member of the Roche Group



A GILEAD Company



Corporate Roundtable

The AACI Corporate Roundtable provides a forum for AACI cancer centers to address topics of mutual interest with industry colleagues. Through the Corporate Roundtable, cancer centers interact directly with industry decision makers. This interaction leads to support for both new and ongoing AACI programs and initiatives. Roundtable members met in June during the 16th Annual Clinical Research Innovation (CRI) Meeting and again in October at the 2024 AACI/CCAF Annual Meeting. Discussions focused on topics such as clinical trial access and diversity; operational efficiencies; and partnerships to increase clinical trial access.

AACI extends its gratitude for the commitment and support of its 2024 Corporate Roundtable members shown at left.

Tech Gold

Introduced in 2024, the AACI Tech Gold membership provides a forum for AACI cancer centers and technology companies to exchange ideas and imagine new possibilities for enhancing oncology through technology. By building important relationships with AACI cancer centers, Tech Gold members have the potential to accelerate progress against cancer, benefiting patients and their families. Thank you to the 2024 Tech Gold members, **Caris Life Sciences**, **Cognizant**, and **Yunu, Inc.**



Sustaining Members

Sustaining membership in AACI includes nonprofit organizations that represent and support the educational and professional development of clinical oncology health professionals and researchers. These like-minded cancer organizations and patient advocacy groups share a common goal of decreasing the national cancer burden. Sustaining members participate in AACI-sponsored meetings, workshops, and forums and meet annually with AACI leadership.

AACI is grateful for the support of its 2024 Sustaining Members, **American Association for Cancer Research**, **American Cancer Society**, **American Society of Clinical Oncology**, **Hematology/Oncology Pharmacy Association**, and **Society for Immunotherapy of Cancer**.



American Association for Cancer Research



Hematology/Oncology Pharmacy Association



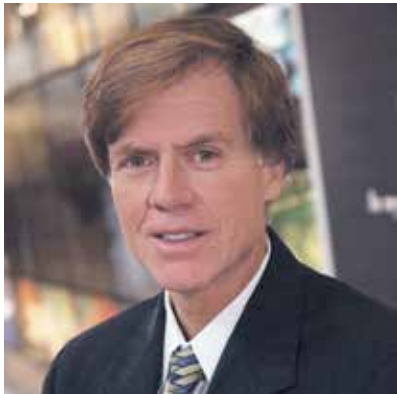
Society for Immunotherapy of Cancer

AACI Board of Directors

New Board Members

Drs. B. Mark Evers, Kelvin Lee, and Thomas A. Sellers were elected to the AACI Board of Directors in 2024 for two-year terms.

Dr. Evers is director of the UK Markey Cancer Center, physician-in-chief of the Oncology Service Line, and associate vice president for oncology research and strategic development. Under his leadership, UK Markey achieved NCI designation in 2013 and Comprehensive status with its recent renewal in 2023. Dr. Evers served on AACI's Annual Meeting Program Committee in 2018.



Dr. B. Mark Evers

Dr. Lee became the third director of the Indiana University (IU) Melvin and Bren Simon Comprehensive Cancer Center in 2021, succeeding Dr. Patrick J. Loehrer. Dr. Lee is the HH Gregg Professor of Oncology, associate dean for cancer research in the IU School of Medicine, and the system oncology medical director for IU Health. Dr. Lee served on the AACI Annual Meeting Program Committee in 2023 and chaired the 2024 program committee.



Dr. Kelvin Lee

Dr. Sellers has served in a variety of leadership roles at the University of Minnesota, Mayo Clinic, and Moffitt Cancer Center, and is now director of the OHSU Knight Cancer Institute. He served on the AACI Board of Directors from 2014-2017 and on AACI's Annual Meeting Program Committee in 2017 and 2018.



Dr. Thomas A. Sellers

Outgoing Board Members

AACI extends its appreciation to **Drs. Marcia Cruz-Correa, Ruben A. Mesa, and Robert H. Vonderheide** for their service on AACI's Board of Directors. Dr. Cruz-Correa stepped down in 2024 as director of the University of Puerto Rico Comprehensive Cancer Center; Dr. Mesa is president and executive director of Atrium Health Wake Forest Baptist Comprehensive Cancer Center; and Dr. Vonderheide is director of Abramson Cancer Center of the University of Pennsylvania.



Dr. Marcia Cruz-Correa



Dr. Ruben A. Mesa



Dr. Robert H. Vonderheide



2024 Committees

ANNUAL MEETING PROGRAM COMMITTEE

Chair: Kelvin Lee, MD
Indiana University
Melvin and Bren Simon Comprehensive Cancer Center

John Carpten, PhD
City of Hope Comprehensive Cancer Center

Jenny Chang, MD
Houston Methodist
Dr. Mary and Ron Neal Cancer Center

Nicholas Fisher, MBA
Siteman Cancer Center

Loriana Hernández-Aldama
ArmorUp for LIFE®

Andrew Mesecar, PhD
Purdue University Institute for Cancer Research

Jennifer W. Pegher, MA, MBA
Association of American Cancer Institutes

Yolanda Sanchez, PhD
University of New Mexico
Comprehensive Cancer Center

Julie C. Schaum, MS
Vanderbilt-Ingram Cancer Center

Barry P. Sleckman, MD, PhD
O'Neal Comprehensive Cancer Center at the
University of Alabama at Birmingham

Alex Zafirovski, MBA, RT(T) ARRT
Robert H. Lurie Comprehensive Cancer Center of
Northwestern University

CATCHMENT AREA DATA EXCELLENCE (CADEX) PLANNING COMMITTEE

Chair: Dinesh Pal Mudaranthakam, PhD, MBA, MS
The University of Kansas Cancer Center

Todd Burus, MAS
UK Markey Cancer Center

Peter DelNero, PhD, MPH
UAMS Winthrop P. Rockefeller Cancer Institute

Lauren E. Hackett, MPA
Montefiore Einstein Comprehensive Cancer Center

Christopher McNair, PhD
Sidney Kimmel Comprehensive Cancer Center at
Jefferson

Debby Oh, MSc, PhD
UCSF Helen Diller Comprehensive Cancer Center

Tracy Omega, PhD, MA, MPAS, MS
Huntsman Cancer Institute at the University of Utah

Sandi L. Pruitt, PhD
Simmons Comprehensive Cancer Center
UT Southwestern Medical Center

Shayla J. Scarlett, MBA, MPA, DipACLM
GW Cancer Center

Katherine Y. Tossas, PhD, MS
VCU Massey Comprehensive Cancer Center

Susan T. Vadaparampil, PhD, MPH
Moffitt Cancer Center

CELLULAR THERAPY INITIATIVE

Chair: Peter Riedell, MD
The University of Chicago Medicine
Comprehensive Cancer Center

Lihua Elizabeth Budde, MD, PhD
City of Hope Comprehensive Cancer Center

Matthew H. Carabasi, MD
Sidney Kimmel
Comprehensive Cancer Center at Jefferson

Natalie Grover, MD
UNC Lineberger Comprehensive Cancer Center
University of North Carolina at Chapel Hill

Yen-Michael S. Hsu, MD, PhD, CABP
UPMC Hillman Cancer Center

Frederick L. Locke, MD
Moffitt Cancer Center

Premal Lulla, MD
Dan L Duncan Comprehensive Cancer Center at
Baylor College of Medicine

Joseph McGuirk, DO, FACP
The University of Kansas Cancer Center

Kunle Odunsi, MD, PhD
The University of Chicago Medicine
Comprehensive Cancer Center

Sapna Parshottam, BSc, MSc
The University of Texas MD Anderson Cancer Center

Miguel-Angel Perales, MD
Memorial Sloan Kettering Cancer Center

David L. Porter, MD
Abramson Cancer Center of the University of Pennsylvania

Craig Sauter, MD
Cleveland Clinic Cancer Center

Joseph Uberti, MD, PhD
Karmanos Cancer Institute, Wayne State University

CLINICAL RESEARCH INNOVATION (CRI) STEERING COMMITTEE

Chair: Thomas J. George, Jr., MD, FACP, FASCO
University of Florida Health Cancer Center

Dina Aziz, MSHS
The University of Texas MD Anderson Cancer Center

Frances Brogan, MSN, RN, OCN, CCRP
Herbert Irving Comprehensive Cancer Center
Columbia University Irving Medical Center

Angela Campbell, MS
The Ohio State University Comprehensive Cancer Center
- The James

Arcadia Cruz, PhD
UC San Diego Moores Cancer Center

Angela Fritsche, MPA
Mayo Clinic Comprehensive Cancer Center

Muhammad Furqan, MBBS
Holden Comprehensive Cancer Center
University of Iowa

Margaret Kasner, MD, MSCE
Sidney Kimmel Comprehensive Cancer Center at
Jefferson

Matthew R. Kovak, MS, CCRP
UAMS Winthrop P. Rockefeller Cancer Institute

Wendy Law, PhD
Fred Hutch Cancer Center

Eneida Nemecek, MD, MS, MBA
OHSU Knight Cancer Institute

Jennifer W. Pegher, MBA
Association of American Cancer Institutes

Susanna Sellmann, MRT, BSc, CCRP
Princess Margaret Cancer Centre
University Health Network

Rachna Shroff, MD, MS, FASCO
The University of Arizona Cancer Center

CRI EDUCATION AND OPERATIONS SUBCOMMITTEE

Leader: Wendy Bloomer, PhD, CCRP
Duke Cancer Institute, Duke University Medical Center

Jonathan Aguilar
The University of Texas MD Anderson Cancer Center

Vanessa Cajahuaringa, CCRP
Cedars-Sinai Cancer

Erin Cebula, MPH, CCRP
Wilmot Cancer Institute, UR Medicine

Doreen DeGray
Wilmot Cancer Institute, UR Medicine

Jillian De Jong
The University of Kansas Cancer Center

Katie Hogan
University of Colorado Cancer Center

Mary Horak, CCRP
UPMC Hillman Cancer Center

Christine Jerome, MS, CCRP
Sidney Kimmel Comprehensive Cancer Center at
Jefferson

Fyalon Kerr, CCRP
Indiana University Melvin and Bren Simon
Comprehensive Cancer Center

Rachel Kingsford, MS, CCRP
Huntsman Cancer Institute at the University of Utah

Stacey Lewis, RN, BSN, OCN, BBA
Atrium Health Wake Forest Baptist
Comprehensive Cancer Center

Erin E. Lynch, MS, CCRP
Medical College of Wisconsin Cancer Center

Holly McClellan
Vanderbilt-Ingram Cancer Center

Mimi McKay, MPH, BSN, RN, CCRP
Holden Comprehensive Cancer Center, University of Iowa

Aja Macias
Stanford Cancer Institute

Efa Pasieka
Princess Margaret Cancer Centre
University Health Network

Cary Passaglia, MSRC, CCRP
Robert H. Lurie Comprehensive Cancer Center of
Northwestern University

Yolanda Pitts, Med
Simmons Comprehensive Cancer Center
UT Southwestern Medical Center

Jacqueline Stern
Vanderbilt-Ingram Cancer Center

Claire Sulkowski, CCRP
Dana-Farber Cancer Institute, Harvard Medical School

Ginnette Watkins-Kelly, DNP, RN, OCN, NEA-BC
Rutgers Cancer Institute

Shantel Williams
The Tisch Cancer Institute at Mount Sinai

CRI CLINICAL TRIALS OFFICE (CTO) BENCHMARKING WORKING GROUP

Chair: Thomas J. George, Jr., MD, FACP, FASCO
University of Florida Health Cancer Center

Dina Aziz, MSHS
The University of Texas MD Anderson Cancer Center

Frances Brogan, MSN, RN, OCN, CCRP
Herbert Irving Comprehensive Cancer Center
Columbia University Irving Medical Center

Angela Campbell, MS
The Ohio State University Comprehensive Cancer Center
- The James

Angela Fritsche, MPA
Mayo Clinic Comprehensive Cancer Center

Muhammad Furqan, MBBS
Holden Comprehensive Cancer Center, University of Iowa

Margaret Kasner, MD, MSCE
Sidney Kimmel Comprehensive Cancer Center at
Jefferson

Matthew R. Kovak, MS, CCRP
UAMS Winthrop P. Rockefeller Cancer Institute

Carrie Lee, MD, MPH
UNC Lineberger Comprehensive Cancer Center
University of North Carolina at Chapel Hill

Ji-Hyun Lee, PhD
University of Florida Health Cancer Center

Henry Leong, PhD
University of Florida Health Cancer Center

Tara Lin, MD
The University of Kansas Cancer Center

Christopher Loertscher, MA
USC Norris Comprehensive Cancer Center

CRI FINANCIAL DISCLOSURE AND CONFLICT MANAGEMENT TASK FORCE

Chair: Therica Miller, MBA, CCRP
The Tisch Cancer Institute at Mount Sinai

Zeno Ashai, MBBS MPH
USC Norris Comprehensive Cancer Center

Carrie Hansen
The University of Chicago Medicine
Comprehensive Cancer Center

Reina Hibbert, CCRP
Fred Hutch Cancer Center

Alison Ivey, MBA, MS, RN, BSN, OCN, CCRP
University of Florida Health Cancer Center

Kelly Kyle
Simmons Comprehensive Cancer Center
UT Southwestern Medical Center

Erika McCarthy
Memorial Sloan Kettering Cancer Center

Heather McCauley
The University of Chicago Medicine
Comprehensive Cancer Center

Kim Nguyen
Winship Cancer Institute of Emory University

Sara Nordman
Holden Comprehensive Cancer Center, University of Iowa

Erica Orcholski, MPA, CCRP
Masonic Cancer Center, University of Minnesota

Lina Segó, CCRP
Indiana University Melvin and Bren Simon
Comprehensive Cancer Center

Daisy Sosa
USC Norris Comprehensive Cancer Center

Amanda Spratt
The University of Chicago Medicine
Comprehensive Cancer Center

Cindy Wynne-Jones
Simmons Comprehensive Cancer Center
UT Southwestern Medical Center

CORPORATE ROUNDTABLE STIPENDS AND REIMBURSEMENT TASK FORCE

Frances Brogan, MSN, RN, OCN, CCRP
Herbert Irving Comprehensive Cancer Center
Columbia University Irving Medical Center

Amishi Dhadwal, BS
The Tisch Cancer Institute at Mount Sinai

Angela Fritsche, MPA
Mayo Clinic Comprehensive Cancer Center

Thomas J. George, Jr., MD, FACP, FASCO
University of Florida Health Cancer Center

Tiffany Go
Fred Hutch Cancer Center

Ronni Hayes, MBA, CPC
UAMS Winthrop P. Rockefeller Cancer Institute

Ankeeta Saran Joshi, CCRP
Laura and Isaac Perlmutter Cancer Center at
NYU Langone Health

Jay Lebsack
Moffitt Cancer Center

Amy Overby
Winship Cancer Institute of Emory University

Kira Pavlik, MPH, CCRP
Yale Cancer Center
Yale School of Medicine

Bhuvana Ramachandran
Stanford Cancer Institute

Andrea Skafel, MSc, CCRP
UCSF Helen Diller Family Comprehensive Cancer Center

Robert Wesolowski, MD
The Ohio State Comprehensive Cancer Center -
The James

Evan Yu, MD
Fred Hutch Cancer Center

Daniella Hensley
Johnson & Johnson

John Kimmet
Eagle Pharmaceuticals

Laurie Kopacz
Bristol Myers Squibb

Lindsey Maxwell
Johnson & Johnson

Natalie Monegro, MBA, MPH
AbbVie

Megan Mongell
AbbVie

Nye Pelton
Lilly

Daniel Otap
Genentech

Sarah Sherman
Gilead

FINANCE AND INVESTMENT

Chair: David M. Gosky, MA, MBA
The Ohio State University Comprehensive Cancer Center
- The James

Patrick O'Brien, MBA
Fox Chase Cancer Center, Temple Health

Julia C. Schaum, MS
Vanderbilt-Ingram Cancer Center

Joanna Weiss, CPA
Moffitt Cancer Center

GOVERNMENT RELATIONS

Chair: Matthew Swaback, MHA
Sidney Kimmel Comprehensive Cancer Center at
Jefferson

Alexander R. Currie
Vanderbilt-Ingram Cancer Center

John DeMuro
City of Hope Comprehensive Cancer Center

James Kennedy
Roswell Park Comprehensive Cancer Center

Alex M. Krigstein
University of Florida Health Cancer Center

Catherine Liao
Duke Cancer Institute, Duke University Medical Center

Peter J. Mackler
City of Hope Comprehensive Cancer Center

Jill Homer Stewart
The Jackson Laboratory Cancer Center

INCLUSIVE EXCELLENCE STEERING COMMITTEE

Chair: Robert A. Winn, MD
VCU Massey Comprehensive Cancer Center

Wafik S. El-Deiry, MD, PhD, FACP
Legorreta Cancer Center at Brown University

Rudene Haynes, JD
Hunton Andrews Kurth LLP

Loriana Hernández-Aldama
ArmorUp for LIFE™

Robert S. Mannel, MD
Stephenson Cancer Center, University of Oklahoma

Stephen D. Nimer, MD
Sylvester Comprehensive Cancer Center
University of Miami

Ze'ev Ronai, PhD
Cedars-Sinai Cancer

Joann B. Sweasy, PhD
Fred & Pamela Buffett Cancer Center

Cornelia Ulrich, MS, PhD
Huntsman Cancer Institute at the University of Utah

NOMINATING COMMITTEE

Chair: Dario C. Altieri, MD
Ellen and Ronald Caplan Cancer Center of The Wistar Institute

Caryn Lerman, PhD
USC Norris Comprehensive Cancer Center

Raphael E. Pollock, MS, MD, PhD, FACP
The Ohio State Comprehensive Cancer Center -
The James

PHYSICIAN CLINICAL LEADERSHIP INITIATIVE (PCLD) STEERING COMMITTEE

Chair: Karen L. Reckamp, MD, MS
Cedars-Sinai Cancer

Paula M. Fracasso, MD, PhD
VCU Massey Comprehensive Cancer Center

Carrie Lee, MD, MPH
UNC Lineberger Comprehensive Cancer Center
University of North Carolina at Chapel Hill

Christopher Lieu, MD
University of Colorado Cancer Center

Stephanie Lim, MD, MBA
University of Hawai'i Cancer Center
University of Hawai'i at Mānoa

Quan Ly, MD, FACS
Fred & Pamela Buffett Cancer Center

Nicole Simone, MD
Sidney Kimmel Comprehensive Cancer Center at Jefferson

Julie Ann Sosa, MD, MA, FACS, MAMSE, FSSO
UCSF Helen Diller Family Comprehensive Cancer Center

Julie Vose, MD, MBA, FASCO
Fred & Pamela Buffett Cancer Center

Theresa L. Werner, MD
Huntsman Cancer Institute at the University of Utah

Julia White, MD, FACP, FASTRO
The University of Kansas Cancer Center

Lee Wilke, MD, FACS
University of Wisconsin Carbone Cancer Center

PCLD CANCER SERVICE LINE SURVEY WORKING GROUP

Paula Fracasso, MD, PhD, FACP
VCU Massey Comprehensive Cancer Center

Stephanie Lim, MD, MBA
University of Hawai'i Cancer Center
University of Hawai'i at Mānoa

Nicole Simone, MD
Sidney Kimmel Comprehensive Cancer Center at Jefferson

Lee Wilke, MD
University of Wisconsin Carbone Cancer Center

2024 Members

UNITED STATES

ALABAMA

O'Neal Comprehensive Cancer Center at the University of Alabama at Birmingham
Birmingham, Alabama

ARIZONA

Mayo Clinic Comprehensive Cancer Center, Arizona
Scottsdale, Arizona

The University of Arizona Cancer Center
Tucson, Arizona

ARKANSAS

UAMS Winthrop P. Rockefeller Cancer Institute
Little Rock, Arkansas

CALIFORNIA

Cedars-Sinai Cancer
Los Angeles, California

City of Hope Comprehensive Cancer Center
Duarte, California

Loma Linda University Cancer Center
Loma Linda, California

Salk Institute Cancer Center
La Jolla, California

Sanford Burnham Prebys Medical Discovery Institute
La Jolla, California

Stanford Cancer Institute
Palo Alto, California

UC Davis Comprehensive Cancer Center
Sacramento, California

UC San Diego Moores Cancer Center
La Jolla, California

UCI Chao Family Comprehensive Cancer Center
Orange, California

UCLA Jonsson Comprehensive Cancer Center
Los Angeles, California

UCSF Helen Diller Family Comprehensive Cancer Center
San Francisco, California

USC Norris Comprehensive Cancer Center
Los Angeles, California

COLORADO

University of Colorado Cancer Center
Aurora, Colorado

CONNECTICUT

Yale Cancer Center
Yale School of Medicine
New Haven, Connecticut

DISTRICT OF COLUMBIA

Georgetown Lombardi Comprehensive Cancer Center
Washington, District of Columbia

GW Cancer Center
Washington, District of Columbia

FLORIDA

Mayo Clinic Comprehensive Cancer Center, Florida
Jacksonville, Florida

Moffitt Cancer Center
Tampa, Florida

Sylvester Comprehensive Cancer Center University of Miami
Miami, Florida

University of Florida Health Cancer Center
Gainesville, Florida

GEORGIA

Georgia Cancer Center, Augusta University
Augusta, Georgia

Winship Cancer Institute of Emory University
Atlanta, Georgia

HAWAII

University of Hawai'i Cancer Center University of Hawai'i at Mānoa
Honolulu, Hawai'i

ILLINOIS

Cancer Center at Illinois
Urbana, Illinois

Cardinal Bernardin Cancer Center Loyola University of Chicago
Maywood, Illinois

Robert H. Lurie Comprehensive Cancer Center of Northwestern University
Chicago, Illinois

The University of Chicago Medicine Comprehensive Cancer Center
Chicago, Illinois

University of Illinois Cancer Center
Chicago, Illinois

INDIANA

Indiana University Melvin and Bren Simon Comprehensive Cancer Center
Indianapolis, Indiana

Purdue University Institute for Cancer Research
West Lafayette, Indiana

IOWA

Holden Comprehensive Cancer Center University of Iowa
Iowa City, Iowa

KANSAS

The University of Kansas Cancer Center
Kansas City, Kansas

KENTUCKY

UK Markey Cancer Center
Lexington, Kentucky

UofL James Graham Brown Cancer Center
Louisville, Kentucky

LOUISIANA

Louisiana Cancer Research Center
New Orleans, Louisiana

MAINE

The Jackson Laboratory Cancer Center
Bar Harbor, Maine

MARYLAND

Murtha Cancer Center at Walter Reed Bethesda
Bethesda, Maryland

Sidney Kimmel Comprehensive Cancer Center at Johns Hopkins University
Baltimore, Maryland

University of Maryland Marlene and Stewart Greenebaum Comprehensive Cancer Center
Baltimore, Maryland

MASSACHUSETTS

Boston University Cancer Center
Boston, Massachusetts

Dana-Farber Cancer Institute Harvard Medical School
Boston, Massachusetts

Koch Institute for Integrative Cancer Research at MIT
Cambridge, Massachusetts

MICHIGAN

Karmanos Cancer Institute Wayne State University
Detroit, Michigan

University of Michigan Rogel Cancer Center
Ann Arbor, Michigan

MINNESOTA

Masonic Cancer Center, University of Minnesota
Minneapolis, Minnesota

Mayo Clinic Comprehensive Cancer Center
Rochester, Minnesota

MISSISSIPPI

UMMC Cancer Center and Research Institute
Jackson, Mississippi

MISSOURI

Ellis Fischel Cancer Center MU Health Care University of Missouri
Columbia, Missouri

Siteman Cancer Center
St. Louis, Missouri

NEBRASKA

Fred & Pamela Buffett Cancer Center
Omaha, Nebraska

NEW HAMPSHIRE

Dartmouth Cancer Center
Lebanon, New Hampshire

NEW JERSEY

Rutgers Cancer Institute
New Brunswick, New Jersey

NEW MEXICO

University of New Mexico Comprehensive Cancer Center
Albuquerque, New Mexico

NEW YORK

Cold Spring Harbor Laboratory Cancer Center
Cold Spring Harbor, New York

**Herbert Irving Comprehensive Cancer Center
Columbia University Irving Medical Center**
New York, New York

**Laura and Isaac Perlmutter Cancer Center at
NYU Langone Health**
New York, New York

Memorial Sloan Kettering Cancer Center
New York, New York

**Montefiore Einstein
Comprehensive Cancer Center**
Bronx, New York

Northwell Health Cancer Institute
Lake Success, New York

Roswell Park Comprehensive Cancer Center
Buffalo, New York

**Sandra and Edward Meyer Cancer Center at
Weill Cornell Medicine**
New York, New York

Stony Brook Cancer Center
Stony Brook, New York

The Tisch Cancer Institute at Mount Sinai
New York, New York

**Upstate Cancer Center
SUNY Upstate Medical University**
Syracuse, New York

**Wilmot Cancer Institute
UR Medicine**
Rochester, New York

NORTH CAROLINA

**Atrium Health Wake Forest Baptist
Comprehensive Cancer Center**
Winston-Salem, North Carolina

**Duke Cancer Institute
Duke University Medical Center**
Durham, North Carolina

**UNC Lineberger Comprehensive Cancer Center
University of North Carolina at Chapel Hill**
Chapel Hill, North Carolina

OHIO

Case Comprehensive Cancer Center
Cleveland, Ohio

Cleveland Clinic Cancer Center
Cleveland, Ohio

**The Ohio State University
Comprehensive Cancer Center –
The James**
Columbus, Ohio

University of Cincinnati Cancer Center
Cincinnati, Ohio

OKLAHOMA

**Stephenson Cancer Center
University of Oklahoma**
Oklahoma City, Oklahoma

OREGON

OSU Knight Cancer Institute
Portland, Oregon

PENNSYLVANIA

**Abramson Cancer Center of the
University of Pennsylvania**
Philadelphia, Pennsylvania

**Ellen and Ronald Caplan Cancer Center of
The Wistar Institute**
Philadelphia, Pennsylvania

**Fox Chase Cancer Center
Temple Health**
Philadelphia, Pennsylvania

Penn State Cancer Institute
Hershey, Pennsylvania

**Sidney Kimmel Comprehensive Cancer Center at
Jefferson**
Philadelphia, Pennsylvania

UPMC Hillman Cancer Center
Pittsburgh, Pennsylvania

PUERTO RICO

**University of Puerto Rico
Comprehensive Cancer Center**
San Juan, Puerto Rico

RHODE ISLAND

Legorreta Cancer Center at Brown University
Providence, Rhode Island

SOUTH CAROLINA

**Hollings Cancer Center
Medical University of South Carolina**
Charleston, South Carolina

TENNESSEE

**Comprehensive Cancer Center
St. Jude Children's Research Hospital**
Memphis, Tennessee

Vanderbilt-Ingram Cancer Center
Nashville, Tennessee

TEXAS

**Dan L Duncan Comprehensive Cancer Center at
Baylor College of Medicine**
Houston, Texas

**Houston Methodist
Dr. Mary and Ron Neal Cancer Center**
Houston, Texas

**Livestrong Cancer Institutes
The University of Texas at Austin
Dell Medical School**
Austin, Texas

**Mays Cancer Center at
UT Health San Antonio MD Anderson**
San Antonio, Texas

**Simmons Comprehensive Cancer Center
UT Southwestern Medical Center**
Dallas, Texas

**The University of Texas
MD Anderson Cancer Center**
Houston, Texas

**University of Texas Medical Branch
Cancer Center**
Galveston, Texas

UTAH

**Huntsman Cancer Institute at the
University of Utah**
Salt Lake City, Utah

VERMONT

The University of Vermont Cancer Center
Burlington, Vermont

VIRGINIA

University of Virginia Cancer Center
Charlottesville, Virginia

VCU Massey Comprehensive Cancer Center
Richmond, Virginia

WASHINGTON

Fred Hutch Cancer Center
Seattle, Washington

WEST VIRGINIA

WVU Cancer Institute
Morgantown, West Virginia

WISCONSIN

Medical College of Wisconsin Cancer Center
Milwaukee, Wisconsin

University of Wisconsin Carbone Cancer Center
Madison, Wisconsin

CANADA

BRITISH COLUMBIA

BC Cancer
Vancouver, British Columbia

ONTARIO

**Princess Margaret Cancer Centre
University Health Network**
Toronto, Ontario



PO Box 7317
Pittsburgh, PA 15213

www.aaci-cancer.org

