

Introduction

The Harold C. Simmons Comprehensive Cancer Center's (Simmons) serves 8.1 million residents in Dallas-Fort Worth (DFW), a population larger than 38 US states. To increase cancer center members' community awareness, the Office of Community, Outreach, Engagement and Equity (COEE) created the **Simmons SCOPE dashboard** summarizing the region's diverse population and cancer inequities requiring collective action. While initially developed for internal use, the COEE Community Advisory Board identified value in sharing cancer data with the broader public.

Purpose

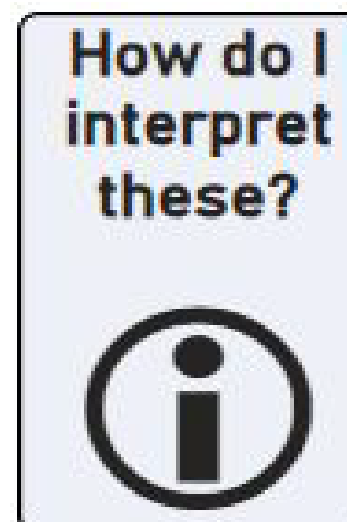
Provide accurate and accessible cancer data in a manner that is engaging for researchers and the general public.

Methods

Power BI was used to display data and visualizations to enable interactive exploration of health disparity and cancer information. Visualizations (see Figures) display disparities by geography, race and ethnicity, and sex. Data sources include the American Community Survey, Behavioral Risk Factor Surveillance System, and the Surveillance, Epidemiology and End Results cancer registries. All data are paired with descriptive summaries to help readers understand the rapidly changing catchment area.

Tabs providing navigation and interpret help are located throughout the dashboard.

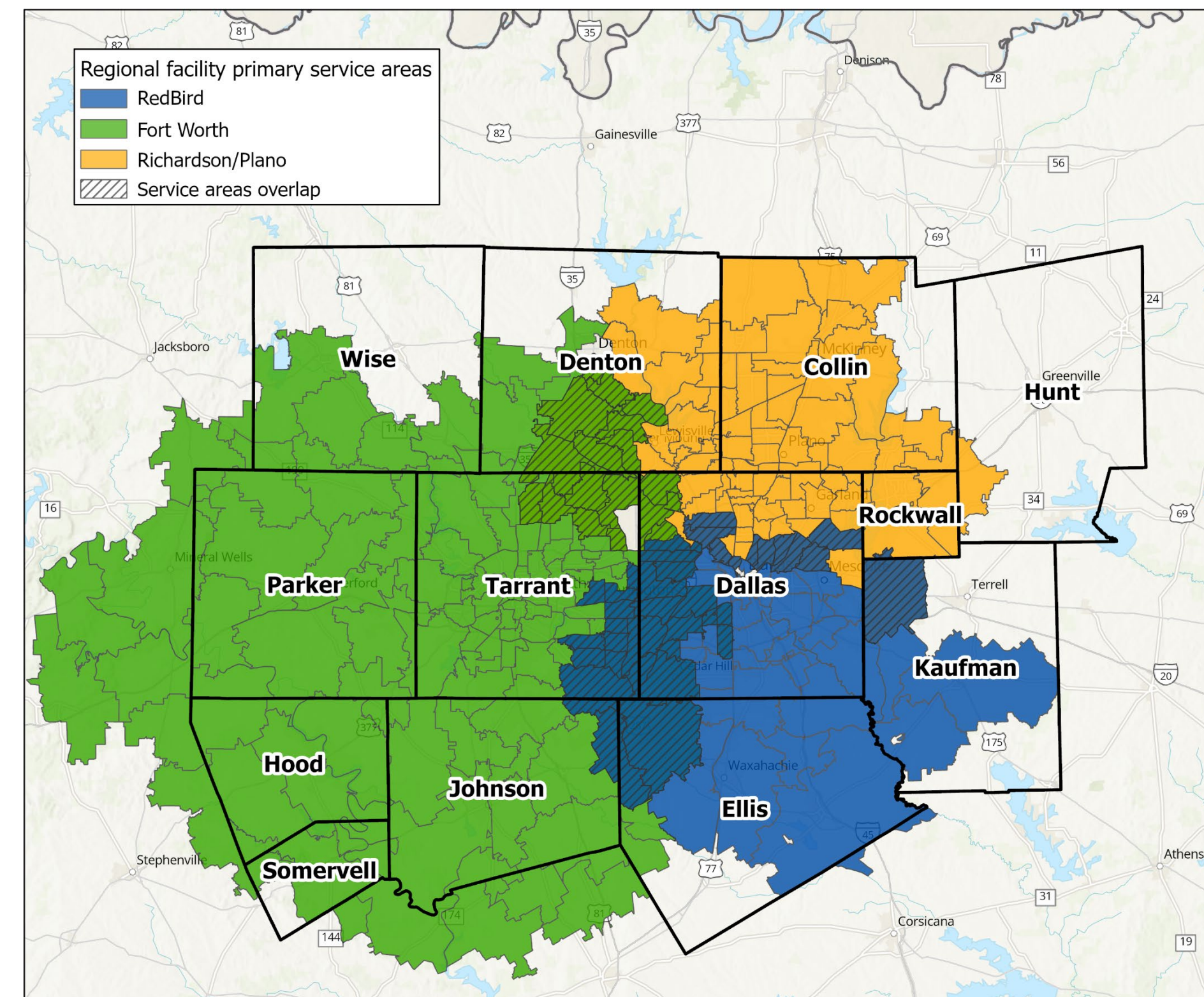
- [Click here to navigate dashboard pages](#)
- [Click here to view FAQs](#)
- [Click here to view glossary, technical notes and citations](#)



Dashboard Layout

The Simmons SCOPE dashboard features two types of data:

1) Sociodemographic features: Area maps, community & catchment area characteristics



2) Cancer risk factors and outcomes: Behavioral risk factors and age-adjusted incidence, mortality, and survival

Selections

Cancer type*

- Select all
- AYA (all cancers, age 15-39)
- Brain & other nervous system
- Colon and Rectum
- Esophagus
- Female breast
- HPV-related
- Kidney and Renal Pelvis
- Leukemia

Sex

- All sexes
- Female
- Male

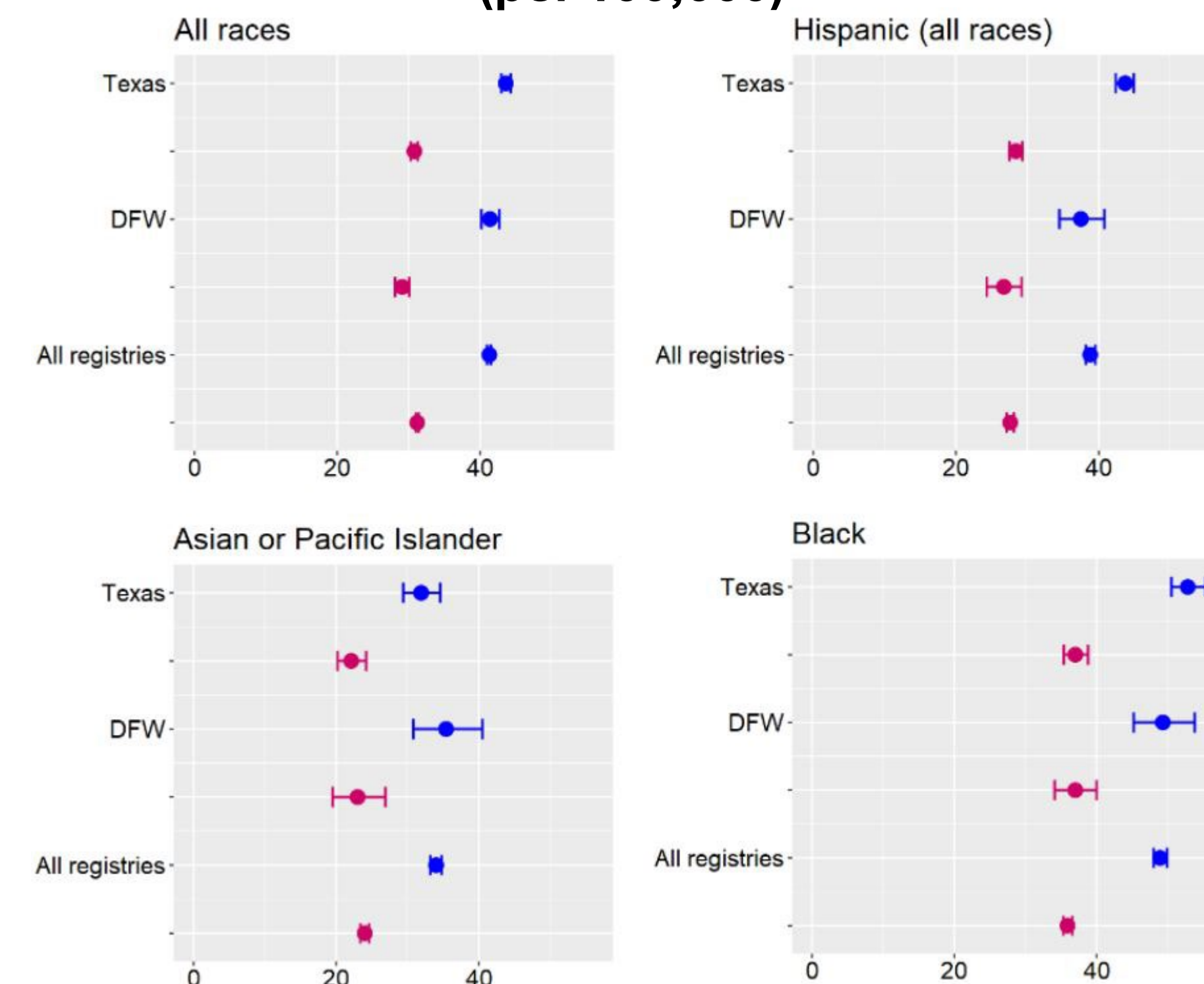
Area

- Select all
- All registries
- DFW
- Texas

Race**

- All races/ethnicities
- American Indian/Alaska Native
- Asian or Pacific Islander
- Black
- Hispanic (All Races)
- White

Colon and Rectum: Age-Adjusted Incidence Rate (per 100,000)



Results

Launched in June 2024, Simmons SCOPE is currently being disseminated on institutional websites, shared with the cancer center's Community Advisory Board, and by word of mouth. It has been viewed over 1,000 times and has already influenced cancer center strategic planning and outreach.

Challenges and Future Plans

- During implementation, technical challenges arose, especially around how to adapt the dashboard for public access and understanding. This showed the importance of defining the target audience before beginning development.
- Future plans include adding new topics, regular updates, and Spanish translation, and creating infographics and other educational materials to highlight specific topics.
- The SCOPE dashboard will ensure that DFW residents have a reliable resource to review information on the local cancer burden, community assets, and cancer disparities.

SCOPE out the dashboard!



Supporting Equity, Community Outreach, Prevention and Equity (SCOPE) for the Harold C Simmons Comprehensive Cancer Center

Funding: P30CA142543 (PI: Arteaga)