

15th Annual AACI CRI Meeting

JUNE 26-28 2023

Loews Chicago O'Hare Hotel



PO Box 7317
Pittsburgh, PA 15213

www.aaci-cancer.org

A hand is shown in silhouette, holding a glowing lightbulb. Inside the lightbulb is a glowing brain. The background is a network of white dots connected by thin white lines, creating a mesh-like structure. The lightbulb is the brightest part of the image, casting a warm glow.

**CANCER CLINICAL RESEARCH
FROM ABSTRACT TO REALITY**



AACI CRI 2023 Steering Committee

Chair: Tara L. Lin, MD

The University of Kansas Cancer Center

Chair-elect: Thomas J. George, Jr., MD, FACP

University of Florida Health Cancer Center

Frances Brogan, MSN, RN, OCN, CCRP

*Herbert Irving Comprehensive Cancer Center
Columbia University Irving Medical Center*

Arcadia Cruz, PhD

UC San Diego Moores Cancer Center

Angela Fritsche, MPA

Mayo Clinic Comprehensive Cancer Center

Margaret Kasner, MD, MSCE

Sidney Kimmel Cancer Center at Jefferson Health

Matthew Kovak, MS, CCRP

UAMS Winthrop P. Rockefeller Cancer Institute

Wendy Law, PhD

Fred Hutchinson Cancer Center

Christopher Loertscher, MA

USC Norris Comprehensive Cancer Center

Eneida Nemecek, MD, MS, MBA

OHSU Knight Cancer Institute

Jennifer W. Pegher, MA

Association of American Cancer Institutes

Anne Schnatterly, MBA, BSN, RN, CCRP

WVU Cancer Institute

Susanna Sellmann, MRT, BSc, CCRP

*Princess Margaret Cancer Centre
University Health Network*

Rachna Shroff, MD, MS

The University of Arizona Cancer Center

Meeting App and Social Media

The agenda, presentations, exhibitor information, and attendees list are available on the meeting app.

To access the app:

- Download "Cvent Events" from your mobile app store.
- Within the Cvent Events app, search for "15th Annual AACI Clinical Research Innovation Meeting" and download the meeting.
- Enter your name and email used during registration.
- You will receive a 6-digit verification code. Enter your code and log in.

The meeting app can also be accessed on your desktop at:

<https://cvent.me/80OeXR>

Twitter: @AACI_Cancer

Facebook: AACICancer

LinkedIn: <https://linkedin.com/company/aaci-cancer>

Hashtag: #CRI2023

Wireless Network: AACI CRI Wi-Fi

Password: 2023cri

AACI CRI Welcome

The Association of American Cancer Institutes (AACI) Clinical Research Innovation (CRI) program serves as a network for research leaders to develop and share best practices for the efficient operation of clinical trials offices (CTO) at AACI cancer centers.

The programming of the 15th Annual AACI CRI Meeting, "Taking Innovations in Cancer Clinical Research From Abstract to Reality," aims to stimulate cancer center interactions and maximize resources by creating opportunities for peer-to-peer networking and collaboration.

CRI Strategic Plan Goals and Projects

- Increase AACI cancer center member participation in CRI and integrate CRI into AACI programs and initiatives
- Collect and disseminate benchmarking data to develop and support cancer center clinical trials
- Encourage cancer centers to share emerging practices for improving community outreach and engagement in clinical trials
- Promote diversity, equity, and inclusion for training and career development
- Develop clinical research education, resources, and networks for professional development to continue fostering communication and mentoring opportunities
- Increase engagement with industry and other stakeholders to support CRI
- Develop financially sustainable models for facilitating efficient and rapid clinical trials office operations

AACI CRI Meeting Objectives

- Discuss ways to create and maintain a positive environment in the clinical trials office (CTO) to ensure staff retention and top performance
- Share strategies for developing a community network for cancer clinical trials by reassessing long-standing operational practices
- Learn from patient advocates' unique perspectives on recruitment challenges and solutions
- Share successful and innovative strategies to broaden the outreach and recruitment of diverse patients in clinical trials
- Understand potential disconnections between clinical care and research by examining relationships between departments and aligning reporting structures to share data as a collective effort
- Review the differences and common operational challenges between pragmatic trials and decentralized trials to understand how to overcome them
- Review tips for preparing a Cancer Center Support Grant (CCSG) application, with a focus on the Clinical Protocol and Data Management (CPDM) and Protocol Review and Monitoring System (PRMS) components
- Network with like-minded professionals to help build relationships and support efficiency in all AACI cancer center member CTOs

Who Attends This Meeting?

- Individuals from AACI member cancer centers, including:
 - CTO administrative directors, medical directors, managers, and supervisors
 - Deputy/associate directors of clinical research administration
 - Cancer center administrators
 - Research regulatory management and staff
 - Clinical research finance directors, managers, and supervisors
 - Biostatisticians and informatics specialists
- Employees of U.S. Department of Health and Human Services agencies and offices, including the National Cancer Institute and the U.S. Food and Drug Administration
- AACI sustaining members
- AACI Corporate Roundtable members
- Representatives from industry, including drug development companies, clinical research organizations, and consultants
- Employees of information technology companies that support cancer center clinical research management
- Representatives of like-minded organizations promoting patient access to clinical trials

MEETING PROGRAM

15th Annual AACI Clinical Research Innovation (CRI) Meeting *Taking Innovations in Cancer Clinical Research From Abstract to Reality*

Monday, June 26 – Wednesday, June 28

All sessions are in central time. Sessions are held in Cassatt unless otherwise noted.

Monday, June 26

11:00 AM Registration Opens Artist Foyer

11:00 AM Exhibits Open Artist Foyer

1:00 PM Welcome

Tara L. Lin, MD

The University of Kansas Cancer Center

1:30 PM Exploring Unique and Innovative Strategies for Clinical Trial Recruitment

This panel discussion will focus on unique approaches to trial recruitment, incorporating contemporary innovations like social media campaigns and mobile outreach. Experts from AACI cancer centers will share insights into various strategies to optimize trial recruitment with a particular focus on groups under-represented in clinical research.

Moderator: Thomas J. George, Jr., MD, FACP

University of Florida Health Cancer Center

Lisa Carter-Bawa, PhD, APRN, ANP-C, FAAN

Center for Discovery and Innovation at Hackensack Meridian Health

Kearston Ingraham, MPH

Duke Cancer Institute, Duke University Medical Center

Mel Mann, MBA, MEd

Patient Advocate

2:30 PM Networking Break Artist Foyer

3:00 PM Manage, Review, Monitor: Preparing the CPDM and PRMS Components of the CCSG

National Cancer Institute (NCI) officials will provide an overview of recent and proposed changes to NCI's Cancer Center Support Grant (CCSG), including new guidelines for reporting data for pragmatic trials. Panelists will also review the practical implications of preparing a CCSG competing renewal, with a focus on the Clinical Trials Reporting Program, revisions to the Funding Opportunity Announcement—including funding of investigator-initiated trials and catchment area considerations—new diversity and inclusion reporting requirements, and prospects for continued virtual site visits.

Moderator: Wendy Law, PhD

Fred Hutchinson Cancer Center

Min He, PhD

National Cancer Institute

Gisele Sarosy, MD

National Cancer Institute

4:00 PM Poster Session *Avedon*

**5:30 PM Welcome Reception *Artist Foyer*
Supported by Actalent and Florence**

Tuesday, June 27

7:00 AM General Breakfast *Guggenheim – Museum Wing*

**7:00 AM CTO Administrative Directors' Breakfast
*(invitation only) Prado Room***

**7:00 AM CTO Medical Directors' Breakfast
*(invitation only) Metropolitan Room***

8:00 AM Exhibits Open *Artist Foyer*

8:15 AM Welcome

Tara L. Lin, MD

The University of Kansas Cancer Center

**8:30 AM Keynote Presentation: The Power of Positivity:
Building a Stronger, More Resilient Clinical Cancer
Research Team**

Dr. Ted A. James will offer valuable insights and actionable tactics for promoting a positive workplace culture, raising morale and retention, and improving outcomes. Other discussion topics include the significance of positivity in clinical cancer research and how it can be leveraged to enhance the institution's mission and achieve greater professional satisfaction. Participants will leave with tangible strategies they can adopt to improve their performance and transform their work environment.

Moderator: Tara L. Lin, MD

The University of Kansas Cancer Center

Ted A. James, MD, MHCM, FACS

Beth Israel Deaconess Medical Center, Harvard Medical School

**9:30 AM Modernizing Clinical Trial Conduct: Operational
Readiness for Pragmatic and Decentralized Trials**

Managing pragmatic versus decentralized trials first requires a deep understanding of the differences between them. This session will aim to provide clear definitions of the two types of trials, along with a review of both their unique and shared challenges, including activation, staffing, and training.

Moderator: Angela Fritsche, MPA

Mayo Clinic Comprehensive Cancer Center

Mark Agulnik, MD

City of Hope Comprehensive Cancer Center

Shaan Beg, MD

Science 37

Ana Patricia Ortiz, MPH, PhD

University of Puerto Rico Comprehensive Cancer Center

Harpreet Singh, MD

U.S. Food and Drug Administration

10:30 AM Break

10:45 AM Breakout Sessions

Community Outreach and Engagement & Diversity, Equity, and Inclusion

Louvre 1

Co-moderator: Patricia Hurley, MSc

American Society of Clinical Oncology

Co-moderator: Grzegorz Nowakowski, MD

Mayo Clinic Comprehensive Cancer Center

Quality Assurance & Remote Monitoring and Auditing

Warhol B

Co-moderators: Adrian Granobles, CCRP, and Karima Yataghene, MD

Memorial Sloan Kettering Cancer Center

Regulatory

Pollock A

Co-moderators: J. Kaitlin Morrison, PhD, and Shaw Scott

UNC Lineberger Comprehensive Cancer Center

University of North Carolina at Chapel Hill

Resource Management and Finance

Warhol A

Co-moderators: Phillip Eggleton, BBA, and Ronni Geary, MBA, CPC

UAMS Winthrop P. Rockefeller Cancer Institute

Training, Career Development, and Staff Retention

Louvre 2

Moderator: Anna Kukulka, RN, BSN, MEd, CCRC

University of Florida Health Cancer Center

Trial Recruitment and Study Conduct (IITs)

Pollock B

Co-moderators: Lillian Neal, MSc, CCRP, and Katherine Vosburgh, BSN, RN, BMTCN

Hollings Cancer Center, Medical University of South Carolina

Trial Start-up, Activation, and Protocol Development

Louvre 3

Co-moderators: Amanda Spratt, CCRP, and Lauren Wall, MS

The University of Chicago Medicine Comprehensive Cancer Center

11:45 AM Lunch *Guggenheim – Museum Wing*

1:15 PM 2023 CRI Abstract Presentations

Abstracts from AACI cancer center members focus on oncology research that illuminates clinical research challenges and solutions, accelerating cancer drug development. The CRI steering committee has selected three abstracts for presentation at this year's meeting. The abstract presentations will be followed by a Q&A session.

Moderator: Tara L. Lin, MD

The University of Kansas Cancer Center

Jennifer Bollmer, PhD

Medical College of Wisconsin Cancer Center

Christy Spalink, DNP, MSN, RN

Laura and Isaac Perlmutter Cancer Center at NYU Langone

Christina Wiess, CCRP

Yale Cancer Center, Yale School of Medicine

2:15 PM Breakout Sessions

Community Outreach and Engagement & Diversity, Equity, and Inclusion

Louvre 1

Co-moderator: Jose Gomez, MSW

Cedars-Sinai Cancer

Co-moderator: Nedra Johnson, BSN, RN, CCRP

Medical College of Wisconsin Cancer Center

Quality Assurance & Remote Monitoring and Auditing

Warhol B

Co-moderators: Susan Puleio and Jacqueline Simpronio

Memorial Sloan Kettering Cancer Center

Regulatory

Pollock A

Moderator: Stacy Mercado, MS, CCRC, CHRC

Abramson Cancer Center of the University of Pennsylvania

Resource Management and Finance

Warhol A

Moderator: Joshua Plassmeyer, MS, CCRP

UPMC Hillman Cancer Center

Training, Career Development, and Staff Retention

Louvre 2

Moderator: Carrie Lee, MD, MPH

UNC Lineberger Comprehensive Cancer Center

University of North Carolina at Chapel Hill

Trial Recruitment and Study Conduct (IITs)

Pollock B

Co-moderators: Christina Crabtree-Ide, PhD, MPH, and Rachel Frascati, PhD

Roswell Park Comprehensive Cancer Center

Trial Start-up, Activation, and Protocol Development

Louvre 3

Co-moderators: Philip Arlen, PhD, Lindsey Mooney and Kelly Williams

Sylvester Comprehensive Cancer Center, University of Miami Health System

3:15 PM Networking and Dessert Break *Artist Foyer*

3:45 PM “We Are (Work) Family”: Building a Positive CTO Team Culture

Along with the daily tasks that keep a clinical trials office running smoothly, creating a positive environment for staff helps to ensure efficiency and top performance. In this session, panelists discuss defining the "work family," building values and culture, hiring practices, remote work vs. in-person policies, communication, and maintaining a positive culture at community sites.

Moderator: Matthew Kovak, MS, CCRP

UAMS Winthrop P. Rockefeller Cancer Institute

Zeno Ashai, MBBS, MPH

USC Norris Comprehensive Cancer Center

Kristin Herman, MBA

Sidney Kimmel Cancer Center at Jefferson Health

Michelle Liendo, MSHI, CCRP

VCU Massey Cancer Center

4:45 PM Vendor Presentation: Triomics

Activating Clinical Data for Research

Clinical data is the linchpin for advancing medical research. However, the lack of standardization and interoperability poses challenges to the automation and scaling of these processes. As a result, researchers are stuck with laborious manual procedures such as patient chart reviews and transferring data from EHR to EDCs.

Triomics is at the forefront of solving these challenges by harnessing the power of data standards such as FHIR, mCode, and AI systems, including sophisticated language models that can extract relevant information from complex medical data.

In this interactive session, we'll explore new developments in health care data interoperability, AI, and Triomics' innovative technology. This session is ideal for cancer center administrators, clinical trialists, health care researchers, and data scientists.

Sarim Khan and Sorena Nadaf

Triomics

8:00 PM Hospitality *Ice Bar, Lobby Level*

Wednesday, June 28

7:00 AM Breakfast *Guggenheim – Museum Wing*

8:00 AM Exhibits Open *Artist Foyer*

8:00 AM Welcome

Tara L. Lin, MD

The University of Kansas Cancer Center

8:15 AM It Takes a Community: Overcoming the Barriers to Decentralized Trials

Developing a community network for cancer clinical trials is a multi-step and often complex process. Challenges can include finding the right space, thinking outside the box on budgeting, and adapting sometimes long-standing administrative practices. Panelists for this session will discuss how to start from scratch when setting up a decentralized trial infrastructure.

Moderator: Arcadia Cruz, PhD

UC San Diego Moores Cancer Center

Amishi Dhadwal

The Tisch Cancer Institute at Mount Sinai

Jesse Nodora, DrPH

UC San Diego Moores Cancer Center

Grzegorz Nowakowski, MD

Mayo Clinic Comprehensive Cancer Center

9:15 AM Part 1: Bridging the Gap Between Clinical Care and Research Operations

Cancer centers routinely wrestle with disconnections between clinical care and research that can sometimes compromise optimal clinical trial operations. Panelists will look at ways to foster collaboration across the campus, including building relationships between the cancer center and investigational drug services, infusion center, radiology, ophthalmology, and other departments.

Moderator: Frances Brogan, MSN, RN, OCN, CCRP

Herbert Irving Comprehensive Cancer Center
Columbia University Irving Medical Center

Heidi Finnes, PharmD, BCOP, FHOPA

Mayo Clinic Comprehensive Cancer Center

Shahnaz Singh-Kandah, MSN

Herbert Irving Comprehensive Cancer Center
Columbia University Irving Medical Center

Christy Spalink, DNP, MSN, ACNP-BC, ACHPN, OCN, RN

Laura and Isaac Perlmutter Cancer Center at NYU Langone

10:15 AM Break

10:30 AM Part 2: Bridging the Gap Between Clinical Care and Research Operations

A collaborative work culture is key to forming strong bonds between clinical care and research operations. Aligning reporting structures and sharing data like catchment area parameters for use in the Cancer Center Support Grant application are among the aspects of collective effort that will be examined in this session.

Moderator: Anne Schnatterly, MBA, BSN, RN, CCRP

WVU Cancer Institute

Todd Burus, MAS

UK Markey Cancer Center

Christopher Loertscher, MA

USC Norris Comprehensive Cancer Center

Dhaval Mehta, MD

UPMC Hillman Cancer Center

11:30 AM Closing Remarks

11:45 AM Adjourn

AACI CRI Meeting 2023 Abstracts

FIRST PLACE:

Hybrid Decentralization of Early Phase Cancer Clinical Trials to Enhance Study Recruitment of Underrepresented Minorities

C. Wiess, A. Rodrigues, I. Palma, D. Wall, P. LoRusso

Yale Cancer Center, Yale School of Medicine

SECOND PLACE:

Strategies to Improve Clinical Research Staff Engagement, Retention, Career Development, and Performance at an NCI-Designated Cancer Center

C. Spalink, A. Joshi, A. Husni, P. Patel, A. Haegler, E. Waalkes, N. Chowdhury, B. Pothuri, J. Mehnert

Laura and Isaac Perlmutter Cancer Center at NYU Langone

THIRD PLACE:

Protocol Prioritization Scores: Are They Predictive?

J. Bollmer, J. Thomas, B. George, M. Larson, K. Schroeder, S. Zindars, R. Kurzrock

Medical College of Wisconsin Cancer Center

Abstracts are organized by category and completion status, then in alphabetical order by cancer center.

CATEGORIES:

Community Outreach and Engagement & Diversity, Equity, and Inclusion

Quality Assurance & Remote Monitoring and Auditing

Regulatory

Resource Management and Finance

Training, Career Development, and Staff Retention

Trial Recruitment and Study Conduct (IITs)

Trial Start-up, Activation, and Protocol Development

Community Outreach and Engagement & Diversity, Equity, and Inclusion

1. Partnering and Building Opportunities Within North Carolina: A Qualitative Analysis of the Lineberger Comprehensive Cancer Center Clinical and Research Internship for Black, Indigenous, and People of Color (BIPOC) Undergraduate Students

A. Daye, S. Godfrey, A. Walens, V. Carlisle, B. Austin, C. Lee, A. Leak Bryant

UNC Lineberger Comprehensive Cancer Center, University of North Carolina at Chapel Hill

2. A Multimodal Approach to Increasing Participation of Underrepresented Communities in Investigator-Initiated Cancer Clinical Trials

J. Gomez, G. Gresham, E. Hautamaki, M. Malikowski, K. Reckamp, B. Rimel

Cedars-Sinai Cancer

2023 Abstracts

- 3. A Multichannel Approach to Reducing the Health Equity Gap in the Black Community**
J. Gomez, A. Levi, A. Hendifar
Cedars-Sinai Cancer
- 4. Development of a Process to Share Plain Language Summaries of Clinical Research Results With Participants at Princess Margaret Cancer Centre**
K. Zeman, H. Cole, S. Sellmann
Princess Margaret Cancer Centre, University Health Network
- 5. Evaluating Clinical Trial Participation Across the Catchment Area: A Data-Driven Approach**
K. Sinclair, D. Forsyth, K. Hamade, C. McNair
Sidney Kimmel Cancer Center at Jefferson Health
- 6. Increasing Clinical Trial Accrual of Minority Patients by Expanding Clinical Operations at Satellite Sites**
A. Dhadwal, D. Catmaero, A. Lieberman-Cribbin, C. Rodriguez, J. Richter, S. Jagannath
The Tisch Cancer Institute at Mount Sinai
-  **7. Hybrid Decentralization of Early Phase Cancer Clinical Trials to Enhance Study Recruitment of Underrepresented Minorities**
C. Wiess, A. Rodrigues, I. Palma, D. Wall, P. LoRusso
Yale Cancer Center, Yale School of Medicine

Quality Assurance & Remote Monitoring and Auditing

- 8. Development of a Digital Audit Tracking Tool for FDA Audit Readiness**
K. MacLennan, B. Koch
Abramson Cancer Center of the University of Pennsylvania
- 9. Improving Quality: First and Third Patient Review**
A. Fritsche, K. Croghan, J. Zbacnik, A. Youssef, L. Winkowski, A. Holland, G. Nowakowski
Mayo Clinic Comprehensive Cancer Center
- 10. Improving Quality: Audit Readiness Team**
L. Winkowski, K. Croghan, K. Severson, H. Kogut, A. Jurens, A. Fritsche, G. Nowakowski, A. Mansfield
Mayo Clinic Comprehensive Cancer Center
- 11. Too Many Studies to Audit and Monitor? Let the Protocol Risk Assessment Tool System Help You Prioritize**
A. Granobles, K. Yataghene
Memorial Sloan Kettering Cancer Center

- 12. Getting Monitoring Deficiencies Resolved**
A. Granobles, K. Mantha-Thaler, K. Yataghene
Memorial Sloan Kettering Cancer Center
- 13. Saved by Automation! A Continuation of the Story of How Technology and Innovative Thinking Significantly Increased Productivity Surrounding CAPA Completion**
J. Simpronio, S. Puleio, M. Ayerov, H. Daggumati, K. Yataghene
Memorial Sloan Kettering Cancer Center
- 14. How to Conduct a Regulatory Review to Ensure a Quality FDA Inspection**
G. Grimaldi, M. Reynolds, P. Chadha, S. Kling, V. Michel, C. Luk, F. Yeh, D. De Blasi, K. Yataghene, C. Houston, A. Drilon, M. Gounder
Memorial Sloan Kettering Cancer Center
- 15. Innovative Approaches to Clinical Research Monitoring: The Power of Ingenuity at Memorial Sloan Kettering Cancer Center**
S. Sanchez-Molero Perez, A. Granobles, K. Mantha-Thaler, L. Bello-Matricaria, K. Yataghene
Memorial Sloan Kettering Cancer Center
- 16. The Impact of Having a “Quality” Quality Assurance System on Audit Findings from 2020-2022**
J. Brown, M. Martinez, N. Surana, P. Seo, E. Dawkins
Sylvester Comprehensive Cancer Center, University of Miami Health System
- 17. Creating a Robust Quality Assurance Program to Ensure Compliance in Research**
S. Achberger, K. McCaffrey, M. Kilbane
Cleveland Clinic Cancer Center
- 18. Reduced Research Patient Wait Times Using Automated Dispensing Cabinet (ADC) Technology for Oral Investigational Drug at an NCI-Designated Comprehensive Cancer Center**
E. Waalkes, C. Spalink, J. Scagliola, A. Joshi, B. Pothuri, J. Mehnert, D. Ayoubi
Laura and Isaac Perlmutter Cancer Center at NYU Langone
- 19. Keeping an Eye on RNI: Frequent Monitoring to Eliminate Preventable Reportable New Information**
E. O’Donovan, P. Patel, E. Yepes, A. Joshi, C. Spalink, A. Goutzinopoulos, B. Pothuri
Laura and Isaac Perlmutter Cancer Center at NYU Langone
- 20. Meeting a National Need: Implementing an NCTN Quality Assurance Program**
R. Selle, C. Gill, S. Zindars, K. Schroeder, B. George
Medical College of Wisconsin Cancer Center

2023 Abstracts

- 21. Path to Improved Trial Management and FDA Inspection Readiness**
G. Grimaldi, M. Reynolds, P. Chada, C. Luk, F. Yeh, K. Yataghene, C. Houston, A. Drilon, M. Gounder
Memorial Sloan Kettering Cancer Center
- 22. Implementation of an Audit Assessment Category Guidance System to Define Audit Deficiencies as Critical, Major, or Minor**
M. Storms, K. Bogaard
The University of Texas MD Anderson Cancer Center
- 23. A Formal Dose Escalation/Safety Lead-In Request and Approval Process**
M. Gawliu
UCSF Helen Diller Family Comprehensive Cancer Center
- 24. Taking Data Validation to the Next Level: Automating Data Validation Using CDASH-Standardized Global eCRFs**
S. Rachuri, M. O'Dwyer, K. Douglas, L. Logan, J. Tewell, S. Balu, C. Lee, J.K. Morrison, E. Crecelius
UNC Lineberger Comprehensive Cancer Center, University of North Carolina at Chapel Hill

Regulatory

- 25. Implementation of a Dashboard to Improve Protocol Oversight and Data and Safety Monitoring Committee (DSMC) Reviews**
C. Kolenut, K. Napolitano, X. Lekperic, C. Zamore, A. Bijwe, D. Caron, S. Hanley, J. Chaft, S. Slovin
Memorial Sloan Kettering Cancer Center
- 26. Creation of the Performance Monitoring Committee: Optimizing Review of the MSK Clinical Research Portfolio**
X. Lekperic, K. Napolitano, C. Kolenut, S. Hanley, A. Rodavitch, C. Houston, D. Rathkopf
Memorial Sloan Kettering Cancer Center
- 27. A Review and Recommendations for Implementing eRegulatory Investigator Site File Systems (eBinder, eISF)**
M. Blair, C. Trani, L. McHugh, K. Tang, V. Chan
Abramson Cancer Center of the University of Pennsylvania
- 28. Development and Implementation of a Research Study Regulatory Complexity Assessment Tool**
M. Blair, C. Trani, L. McHugh
Abramson Cancer Center of the University of Pennsylvania
- 29. Eliminating Unnecessary Review of Offsite Adverse Event (Expedited IND Safety) Reports: Departmental Collaboration Leading to Institutional Position**
M. Blair, S. Mercado, M. Hendricks, D.T. Vogl
Abramson Cancer Center of the University of Pennsylvania

- 30. Closing Time: Protocol Scoring & Remote Closeout for Portfolio Optimization**
M. Ismailzadah, C. Rivera, S. Mistretta, D. Agrinoni, T. Negri, R. Shelton, J. Jurcic, A. Lassman
Herbert Irving Comprehensive Cancer Center, Columbia University Irving Medical Center
- 31. Using HL7-FHIR to Automate Mandatory Reporting of Bone Marrow Transplant Data Decreases Staff Effort and Improves Data Quality**
C. Thomas, R. Panchal, J. Konecny, T. Casali, M. Buckley, E. Klein
Memorial Sloan Kettering Cancer Center
- 32. Regulatory Burden of IRB Submissions: Commercial vs. Internal IRBs**
E. Sibilsy Enselman, J. Humfleet, D. Bashllari
University of Michigan Rogel Cancer Center

Resource Management and Finance

- 33. Clinical Research Scorecard - Performance Metrics**
M. Hendricks
Abramson Cancer Center of the University of Pennsylvania
- 34. Creation of a Budget Workload Score for Analysis**
B. Search, H. Hampton, K. Kaufman, E. Lascu, B. Zakrzewski
Memorial Sloan Kettering Cancer Center
- 35. Automation of Clinical Research Administrative Fees for Internal Recovery**
B. Search, J. Chen, K. Kaufman, L. Lupkin, J. Yan
Memorial Sloan Kettering Cancer Center
- 36. Fostering Portfolio Stewardship Through a Trial Portfolio Balancing Framework**
J. Lebsack, H. Soliman
Moffitt Cancer Center
- 37. Development of an Enhanced Clinical Trial Workload Assessment Tool – The BC Clinical Trial Complexity Tool**
M. Sadiq, S. Sundquist, D. Kato, R. Xu, D. Curman, P. Pollock, K. Sit, K. Halvorsen, J. Clark, M. Abacan, C. Kollmannsberger, B. Eigl
BC Cancer
- 38. Will They Pay? Let's Find Out First!: Saving Time and Money in Industry-Trial Activation**
E. Lebleu, S. Ford, L. Hayes, J. Moehle, H. Soares
Huntsman Cancer Institute, University of Utah
- 39. Leveraging Automation to Increase Time Savings for Processing Research Non-Billables (RNBs)**
S. Siamwalla, R. Panchal, M. Buckley, J. Lengfellner
Memorial Sloan Kettering Cancer Center

2023 Abstracts

40. Development of a Clinical Research Coordinator Capacity Model

J. Johnson, M. Ugrenovic-Petrovic, E. Royster, B. Jones-Lombard, B. Mack, A. Patel, I. Krupitsky, K. Hulse, J. Lebsack

Moffitt Cancer Center

41. Improving PRMC Accrual Monitoring Procedures: Making it Count

S. Osipowicz, R. Dampman Weiss, J. Curry, J. Johnson, M. Kasner

Sidney Kimmel Cancer Center at Jefferson Health

42. Clinical Research – Following the Money, Phase 4

R. Geary, P. Eggleton, M. Kovak, M. Birrer, A. Smith, Z. Feng, N. Pruss

UAMS Winthrop P. Rockefeller Cancer Institute

43. Developing a Scoring Tool to Calculate Protocol Acuity for Clinical Research Nurse Workload

C. Jones¹, M. McAdoo¹, K. Mack¹, A. Hanlyn²

¹UAMS Winthrop P. Rockefeller Cancer Institute

²UAMS IT Research Systems

Training, Career Development, and Staff Retention

44. #ResearchOnResearch – A Research Training Initiative for Clinical Research Professionals

T. Waite

Abramson Cancer Center of the University of Pennsylvania

45. CROSS to CRES: The Evolution of a Clinical Research Operations Supplemental Series to an Accredited Clinical Research Education Series

T. Waite, C. Redlinger-Tabery, E. Dahlmeier

Abramson Cancer Center of the University of Pennsylvania

46. New Employee Orientation – Joining the 21st Century

F. Kerr, S. Asche, C. Bucks

Indiana University Melvin and Bren Simon Comprehensive Cancer Center

47. Strategies to Improve Clinical Research Staff Engagement, Retention, Career Development, and Performance at an NCI-Designated Cancer Center

C. Spalink, A. Joshi, A. Husni, P. Patel, A. Haegler, E. Waalkes, N. Chowdhury, B. Pothuri, J. Mehnert

Laura and Isaac Perlmutter Cancer Center at NYU Langone

48. The Dynamic Duo: Dyad Mentorship of Cancer Clinical Trials Office (CCTO) Leadership

A. Fritsche¹, G. Nowakowski¹, J. Moehle², T. Werner²

¹Mayo Clinic Comprehensive Cancer Center

²Huntsman Cancer Institute, University of Utah

49. Retaining Staff Through Surveys: 6-Month, Stay and Exit

J. Ludescher, G. Nowakowski, T. Halfdanarson, A. Fritsche, C. Griffin, R. Platou, M. Wrenn, K. Croghan

Mayo Clinic Comprehensive Cancer Center

50. A Cancer Clinical Trials Office (CCTO) Orientation Course Reduces Insufficiencies Among Study Coordinators

K. Croghan, G. Boe, J. Zbacnik, A. Youssef, A. Holland, G. Nowakowski, A. Fritsche

Mayo Clinic Comprehensive Cancer Center

51. Going From an In-Person to Remote Training Program: How to Ensure Engagement

V. Tomaselli, M. Nicola

Memorial Sloan Kettering Cancer Center

52. The Great Rebound: Successful Clinical Trials Office Staffing Recovery Strategies

K. Morrison, S. Ladd, J. Huamani-Bundy, C. Hilliard, L. Schreiner, N. Whitman, M. Roxas, S. Scott, B. Adams, E. Moore, J. Maccarone, E. Kelly, J. Mayfield, E. Riley, M. Laffan, C. Tew, P. Derebail, S. Rego, L. Kiefer, T. Conrad, B. Marini, G. Harrison, W. Sarratt, V. Bae-Jump, L. Carey, C. Lee

UNC Lineberger Comprehensive Cancer Center, University of North Carolina at Chapel Hill

53. Innovative and Inclusive Approach to Clinical Research Pharmacist Development

K. Pavlik, R. Sawant, L. Coleman, S. Brogan, T. Ferencz, P. Patel

Yale Cancer Center, Yale School of Medicine

54. Training for Excellence in Clinical Research: 5 Years of Growth

M. Guy, M. Kilbane, K. McCaffrey

Cleveland Clinic, Taussig Cancer Institute

55. Investing in the Future: Protocol Review Mentorship Program for Oncology Fellows at the Duke Cancer Institute

C. Riggan, A. Bender, A. Armstrong

Duke Cancer Institute, Duke University Medical Center

56. Narrowing the Gap – The Synergistic Effect of the Clinical Trials Nurse Liaison

L. Lujan, S. Sharry, J. Moehle, R. Doering, A. Emmett, J. Jones, C. Kotobalavu, M. Dolim, T. Werner, H. Soares

Huntsman Cancer Institute, University of Utah

57. Adding to the Career Ladder of Clinical Research Staff at IUSCCC

L. Haney, F. Kerr, J. Spittler, L. Rohn, J. Corman, L. Sego, C. Nelson, S. Bailey, M. Contreras, T. Lautenschlaeger

Indiana University Melvin and Bren Simon Comprehensive Cancer Center

58. Development and Implementation of Micro-Trainings as Part of Continued Education for Clinical Research

K. Croghan, G. Boe, J. Zbacnik, A. Youssef, A. Holland, G. Nowakowski, A. Fritsche

Mayo Clinic Comprehensive Cancer Center



2023 Abstracts

59. Managing Flexible Work Schedules Within a Disease-Specific Team

C. Dwight, S. Zindars, H. Heaviland

Medical College of Wisconsin Cancer Center

60. Peer Support for Second Victim Syndrome

S. Eberhardt, A. Pilarski, T. Klatt, S. Babe, H. Nestle, K. Schroeder, M. Lingongo

Medical College of Wisconsin Cancer Center

61. Integrating Technology to Support Data Management Abstraction of Adverse Events (AE) and Concomitant Medications (ConMed) From the Electronic Health Record (EHR) to Sponsor Electronic Data Capture (EDC) Systems Using Design Thinking Methodology to Increase Efficiency and Help Reduce Staff Turnover

L. Yuravlivker, N. Bouvier, M. Buckley, S. Jeevarathnam, S. Lazan, M. McKellop, R. Panchal, J. Lengfellner, S. Terzulli, P. Sabbatini

Memorial Sloan Kettering Cancer Center

62. Meeting the Demands of a Growing Team: How Making a Multifaceted Onboarding Program Helped Protocol Activation Move Forward in a Remote Environment

K. Gary, M. Kehoe, J. Larkin, J. Anopa, T. Schulte, E. Valentino, A. Rodavitch

Memorial Sloan Kettering Cancer Center

63. Implementation of Small Group Trainings to Expedite Initial Onboarding for Clinical Research Staff and Increase Connection Between New Employees – One-Year Review

D. Kreitner, M. Wanchoo, D. Castro, R. Lewis, C. Burgin

OHSU Knight Cancer Institute

64. Moving From a Single Educator to an Office of Research Education and Professional Development at an NCI-Designated Comprehensive Cancer Center in Under Five Years

G. Watkins-Keller

Rutgers Cancer Institute of New Jersey

65. Righting the Ship: Addressing Staff Turnover

K. Herman, C. Gifford-Hollingsworth, T. Newhall, S. Osipowicz, C. Jerome, C. Hubert, J. Frazier, M. Kasner, M. Brose, P. O'Connor, M. Huesser, A. Khariton, K. Kelly

Sidney Kimmel Cancer Center at Jefferson Health

66. Training Program: From No Experience to Clinical Research Coordinator

S. Annis, J. de Jong, J. Smith

The University of Kansas Cancer Center

67. Addressing the Clinical Research Staffing Shortage: Clinical Development IMPACT Internship

S. Rego, N. Babadi, L. Kiefer, A. Camp, M. Roxas, J.K. Morrison

UNC Lineberger Comprehensive Cancer Center, University of North Carolina at Chapel Hill

68. The Importance of a Dedicated Clinical Trainer in the Hybrid Environment

C. Tait, S. Ladd, J. K. Morrison, D. Wallack

UNC Lineberger Comprehensive Cancer Center, University of North Carolina at Chapel Hill

69. Research Certification Prep Study Groups: Encouraging Professional Certification for CRO Staff

J. Thomas, A. Anderson, T. George, E. Monari, A. Ivey

University of Florida Health Cancer Center

70. The Utilization of Microsoft Teams for Clinical Research Operations Team Management

M. Russell, D. Kitterman

University of Illinois Cancer Center

Trial Recruitment and Study Conduct (IITs)

71. Early Termination for Multicenter IUSCCC Sites With No Accruals

A. Bauchle, M. Contreras, K. Miller, T. Lautenschlaeger

Indiana University Melvin and Bren Simon Comprehensive Cancer Center

72. Measuring the Impact of Multiple Strategies to Increase Enrollment in Molecular Targeted Trials

L. Wall, K. Paydary, W.M. Stadler, K. Kipping-Johnson, V. Seseri, K. Cabrera, B. Pieke, A. Larkin, M. D'Souza, D. Sulakhe, S. Moellering, A. Spratt

The University of Chicago Medicine Comprehensive Cancer Center

73. Accelerating Cancer Patient Recruitment Through a Mobile Application (Clinical Trial Finder)

D. Mudaranthakam, A. Alsup, V. Murakonda, T. Lin, J. Thompson, B. Gajewski, M. Mayo

The University of Kansas Cancer Center

74. Pan-Screening to Improve Patient Identification for Targeted and Disease Agnostic Trials

A. Anderson, A. Kukulka, A. Ivey, T. George, D. Deremer, E. Monari

University of Florida Health Cancer Center

75. Data Management in Clinical Research: Streamlining, High-Quality Data, and Subject Matter Experts

E. Nelson, A. Ivey, L. Pettiford, A. Anderson

University of Florida Health Cancer Center

76. Adverse Events Logs: Transformation From Paper Forms to an Electronic Health Record Integrated Platform

H. Emamekhoo, M. Weiss, A. Wieben, M. Braden, M. Thompson, J. Kubiak, S. Stewart

University of Wisconsin Carbone Cancer Center

2023 Abstracts

77. Automated Patient Pre-Screening Using a Clinical Trials Patient Matching Algorithm

C. Wiess, G. Gong, P. Kunz

Yale Cancer Center, Yale School of Medicine

78. Expansion of Oncology Clinical Trials in the Indianapolis Suburban Region

J. Spittler, M. Contreras, L. Haney

Indiana University Melvin and Bren Simon Comprehensive Cancer Center

79. Improving Data Entry for Clinical Trials: A Review of REDCap's Clinical Data Pull in the Clinical Research Setting

Y. Lean, V. Pohl, N. Chowdhury, F. Davies

Laura and Isaac Perlmutter Cancer Center at NYU Langone

80. Impact of Revised SRC Accrual Monitoring Policy on Closure of Zero-Accruing Trials

L. Ekins

Medical College of Wisconsin Cancer Center

81. Streamlined Workflow for Tumor Board Preparation, Presentation, and Documentation Allows for Concurrent Clinical Trial Matching Review

O. Dunne¹, E. Kamen¹, P. Austell¹, C. Brawley¹, M. Osoba¹, C. Duck¹, P. Duffin¹, A. Zafirovski¹, M. Gurley¹, C. Passaglia¹, S. Hensley Alford², T. Kumar², S. Mahatma², S. Samant¹

¹Robert H. Lurie Comprehensive Cancer Center of Northwestern University

²Cancer Insights, Bedford Hills, NY

82. Developing a Melanoma Clinical Trial Accrual Task Force

K. Senter, C. Gantz, N. Hartman, R. Seedor

Sidney Kimmel Cancer Center at Jefferson Health

83. Preliminary Development of Expanded Access Through Telemedicine for Advanced Cancers at Kimmel: E-ATTACK Clinic

M. Crino, K. Kaliqi, T. Newhall, T. Savio, J. Anderson, A. Rogers, D. Stone, S. Gordon, B. Bashir, N. Palmisiano

Sidney Kimmel Cancer Center at Jefferson Health

84. Increasing Treatment Accrual in a Diverse Patient Population

M. Russell, D. Kitterman

University of Illinois Cancer Center

Trial Start-up, Activation, and Protocol Development

85. Timing is Everything! - Reducing Clinical Trial Activation Timelines at an NCI-Designated Comprehensive Cancer Center

A. Joshi, H. Duong, C. Spalink, L. Dhanantwari, R. Robertson, N. Catti, D. Wallach, D. Ayoubi, J. Mehnert, B. Pothuri, J. Weber

Laura and Isaac Perlmutter Cancer Center at NYU Langone

86. Sprinting to the Finish Line: Implementing a "Fast Track" Program to Expedite High Priority Clinical Trials at an NCI-Designated Comprehensive Cancer Center

A. Joshi, H. Duong, L. Dhanantwari, R. Robertson, N. Catti, C. Spalink, D. Wallach, J. Mehnert, B. Pothuri, J. Weber

Laura and Isaac Perlmutter Cancer Center at NYU Langone



87. Protocol Prioritization Scores: Are They Predictive?

J. Bollmer, J. Thomas, B. George, M. Larson, K. Schroeder, S. Zindars, R. Kurzrock

Medical College of Wisconsin Cancer Center

88. Protocol Categorization System to Improve Activation Timelines of Mission Critical Research

J. Migliacci, E. Valentino, M. Kehoe, C. Ryan, R. Cambria, A. Rodavitch, S. Hanley

Memorial Sloan Kettering Cancer Center

89. Harmonious Activation of Oncology Protocols Across an Integrated Academic Health System

R. Kurz, C. Messick, T. Saunders

Rutgers Cancer Institute of New Jersey

90. Prioritizing and Submitting Studies for Scientific Review

J. Gay, L. Gruschko

The University of Texas MD Anderson Cancer Center

91. Clinical Research: Tracking Studies in the Pipeline

J. Migliacci, E. Valentino, M. Kehoe, C. Ryan, R. Cambria, A. Rodavitch, S. Hanley

UAMS Winthrop P. Rockefeller Cancer Institute

92. Review Week: Promoting Cross-Functional Collaboration During Study Start-up

B. Scanlan, A. Holley, C. Jones, M. Kovak, M. Birrer

UAMS Winthrop P. Rockefeller Cancer Institute

93. Pilot to Decrease Time-to-Activation for Investigator-Initiated Trials

M. Cases, B. Whalen, A. Yost, A. Skafel, C. Andreadis

UCSF Helen Diller Family Comprehensive Cancer Center

94. First Accrual Within 70 Days of Opening Predicts Overall Trial Accrual Success

K. Hoy, A. Gerds, J. Chan, K. McCaffrey, E. Worthing, F. Arnold, L. Masar, M. Kilbane, H. Pounardjian

Case Comprehensive Cancer Center

95. CTMS Optimization: A Tale of One Platform, Three Clinical Sites, and One Combined Dataset to Improve Trial Activation, Portfolio Management, and Clinical Trials Reporting

M. Mavredes, K. Bouker, M. Marafelias, T. Impallaria, E. Richards

Georgetown Lombardi Comprehensive Cancer Center

96. Cross-Consortium Oversight and Management of Investigator-Initiated Trials at Lombardi Comprehensive Cancer Center

K. Bouker, J. Zenreich, C. Limbad, E. Richards, M. Mavredes

Georgetown Lombardi Comprehensive Cancer Center

2023 Abstracts

97. Smooth Sailing... Cellular Immunotherapy Trials Collaboration and Integration Process

S. Sharry, C. Cromar, L. Lujan, J. Moehle, H. Soares, T. Werner
Huntsman Cancer Institute, University of Utah

98. Collaboration: How Protocol Development and Multi-Center Teams Work to Manage Investigator-Initiated Trials (IITs)

J. Kline, A. Bauchle
Indiana University Melvin and Bren Simon Comprehensive Cancer Center

99. Protocol Development Services for Investigator-Initiated Trials (IITs)

J. Kline, M. Contreras
Indiana University Melvin and Bren Simon Comprehensive Cancer Center

100. Development of an Electronic Logistics Tool to Accelerate Clinical Trial Activation

J. Zbacnik, K. Croghan, A. Youssef, A. Handlogten, G. Nowakowski, A. Fritsche
Mayo Clinic Comprehensive Cancer Center

101. Implementation of Operational Feasibility Review During Study Start-up

M. Jacklin, T. Rudnitzki, M. Waggoner, J. Ranous, M. Koceja, B. George, K. Schroeder
Medical College of Wisconsin Cancer Center

102. FastTrack: A Pilot Project to Shorten Activation Times

K. Schroeder, J. Bollmer, B. George, R. Kurzrock
Medical College of Wisconsin Cancer Center

103. Evolution of MSK's Protocol Activation Core

J. Migliacci, M. Kehoe, E. Valentino, A. Rodavitch
Memorial Sloan Kettering Cancer Center

104. "Out of Site, Out of Mind" – Visualizing the Study Activation Process Enables the Standardization of Site Initiation Visits

L. Thyssen, K. Williams, Y. Enriquez-Nunez
Sylvester Comprehensive Cancer Center, University of Miami Health System

105. Still Waiting for Your IIS to Open? Activating Investigator-initiated Studies at a Matrix Cancer Center

S. Cardona, G. Diaz, L. Thyssen, K. Williams
Sylvester Comprehensive Cancer Center, University of Miami Health System

106. Reducing Burden: The Value of a Research Consent Writer Team

C. Dill, K. Adamick, D. Mitchell IV, A. Zampieri
The University of Texas MD Anderson Cancer Center

107. Maximizing Efficiency in Managing the Trial Activation Pipeline: Activating High-Priority Trials in a Timely Manner

A. Skafel, R. Aggarwal, E. Small
UCSF Helen Diller Family Comprehensive Cancer Center

108. SIV On-Demand: Online Site Initiation Visits for Investigator-Initiated Trials (IITs)

E. Monari, S. Alford, T. George, A. Anderson, A. Ivey
University of Florida Health Cancer Center

109. Rapid Release Protocol Activation Via a Just-in-Time Pathway

A. Anderson, T. George, E. Monari, A. Ivey, L. Pettiford
University of Florida Health Cancer Center

110. Descending the Apex of the Slippery Slope of Kit Management

J. Voyten, J. Urban, M. Horak
UPMC Hillman Cancer Center

Community Outreach and Engagement & Diversity, Equity, and Inclusion

111. Telemedicine Electronic Consenting Preference Among Clinical Trial Participants

M. Buckley, S. Chimonas, S. Shah, Y. Redelman-Sidi, C. White, K. Seier, R. Baser, G. Kuperman, R. Panchal, J. Lengfellner, S. Terzulli, P. Sabbatini
Memorial Sloan Kettering Cancer Center

Regulatory

112. Centralized Investigational New Drug (IND) Safety Report Management Within an eBinder System: A Pilot Program

S. Rebar, A. Toulouse, K. Acosta
Fred Hutchinson Cancer Center

Resource Management and Finance

113. Tapping Into REDCap Capabilities to Improve Efficiency for PRMC Reviewers and Coordinators

S. Phillips, L. Gross, S. Myles
Siteman Cancer Center

Training, Career Development, and Staff Retention

114. Launching a Clinical Trial Coordination Team: A 12-Month Report

K. Martinez, P. Panlasigui, F. Ranjbaran
Fred Hutchinson Cancer Center

115. Implementing an Orientation and Training Program for New Investigators

S. Jones, K. Brinkworth
Fred Hutchinson Cancer Center

2023 Abstracts

Trial Recruitment and Study Conduct (IITs)

- 116. Electronic Subject Data Collection Within an eBinder System**
S. Rebar, K. Lopez, T. Zimmerman
Fred Hutchinson Cancer Center

- 117. Measuring the Impact of a Provider-Triggered Pre-Screening Workflow on Recruitment**
J. Giolitti, P. Panlasigui, K. Martinez
Fred Hutchinson Cancer Center

- 118. PRMS Dashboard for Monitoring Performance & Accrual of Underrepresented Populations**
D. Bitenas, J. Klingman, H. Rothering, M. Gadepalli, E. Lennstrom
Fred Hutchinson Cancer Center

AACI CRI Supporters

AACI gratefully acknowledges support from the following:

Gold Level



Silver Level



Bronze Level



AACI CRI Exhibitors

AACI gratefully acknowledges support from the following:



AACI CRI Exhibitors

Actalent

Our mission is to deliver innovative talent solutions for the world's leading life sciences organizations that help achieve positive health outcomes for the global patient population.

Actalent is a global leader in talent solutions

- Gain access to the largest "network" of clinical research professionals in the industry
- Significantly increase the speed of recruitment to address highest resourcing priorities
- Improve quality of staff in order to improve performance outcomes
- Help manage staff key performance metrics to ensure research objectives are achieved
- Attract and retain highly engaged workforce with a modern approach to employee value proposition

Actalent is a strategic partner for helping cancer research centers

- Deliver highly specialized talent solutions that increases site capacity and research capabilities
- Mitigate the risk of study delays
- Increase patient accruals
- Increase ability to diversify and scale your research
- Improve the patient and PI experience
- Expand research footprint and increase diversity within patient population

Actalent is an operating company of Allegis Group, the global leader in talent solutions.

Advarra

Advarra advances the way clinical research is conducted: bringing life sciences companies, CROs, research sites, investigators, and academia together at the intersection of safety, technology, and collaboration. With trusted IRB and IBC review solutions, innovative technologies, experienced consultants, and deep-seated connections across the industry, Advarra provides integrated solutions that safeguard trial participants, empower clinical sites, ensure compliance, and optimize research performance. Advarra is advancing clinical trials to make them safer, smarter, and faster.

Learn more:

[Technology solutions for sites](#)

[IBC services](#)

[IRB services](#)

AACI CRI Exhibitors

Deep 6 AI

Deep 6 AI is the leader in precision research software, connecting all research stakeholders in an AI-powered, real-time, data-driven, collaborative ecosystem. Our Precision Matching software mines millions of patient records, including “unstructured” physician notes, to pinpoint eligible study patients in real time. Deep 6 AI eliminates months of manual data validation, to de-risk and accelerate clinical trials, because clinical trials should be a gatekeeper (accelerator), not a bottleneck to innovation.

Florence Healthcare

Florence Healthcare is a leading provider of Site Enablement solutions that streamline clinical research operations and improve collaboration among research sites, sponsors, and CROs. With a focus on driving innovation and enhancing the trial site experience through site enablement, Florence Healthcare is committed to closing the cure acceleration gap and revolutionizing the clinical trial industry.

Huron

Our dedicated Cancer Practice builds upon the vast expertise of the Huron Consulting Group, a global organization that helps universities, hospitals, and research institutes drive growth, ignite innovation, and navigate constant change.

The Cancer Practice at Huron Consulting Group has worked with nearly all the NCI-designated and emerging Cancer Centers as well as many health systems.

Our team is led by nationally recognized individuals who bring their 20-plus years of frontline experience to design tailored approaches and solutions that fit the specific goals of each client.

Huron has exceptional experience in clinical research, including leadership and organization, faculty issues, operations improvement, technology, business management, recruitment and retention, activation through closeout processes, enterprise and regional network development, as well as biotech partnerships. The Cancer Practice team spurs innovation and advances knowledge by enhancing clinical research operations, streamlining research administration, providing strategic planning guidance, and preparing for National Cancer Institute designation/redesignation.

Mint Medical

Mint Medical specializes in software solutions for standardized computer-assisted review of medical images and clinical data. Having started as a spin-off of German Cancer Research Center, Mint Medical has supported evidence-based medicine in oncology for over a decade by providing the foundation for imaging and clinical data interoperability. Its cutting-edge software platform mint Lesion™ enables the consistent collection, visualization, and analysis of structured, AI-ready data in

clinical routine, clinical trials, and research. mint Lesion™ is an intelligent radiology assistant that automatically generates structured reports using standardized read procedures and built-in criteria guidelines (e.g., RECIST, Lugano, etc. for clinical trials and PI-RADS, LI-RADS, etc. for routine). It guides the reader through the case, alleviating the burden of ensuring criteria conformity, longitudinal transparency of disease, and reproducibility of measurements. mint Lesion™ is an FDA-cleared medical device used by university hospitals, cancer centers, iCROs, and pharmaceutical companies around the world.

Triomics

Triomics is a technology company that enables site staff to directly transfer data to/from EHRs, labs, medical devices, and other sources directly into both sponsors’ and investigators’ EDC of choice. In addition, Triomics provides a full-stack platform for sites to initiate and manage clinical studies, right from study activation, patient recruitment, and engagement to study finance; thus, helping sites save time and resources usually spent on double data entry, SDV with monitors, identifying patients, and managing study expenses. What's more, Triomics provides its technology stack free of cost to the sites and always will.

Verily

Verily is an Alphabet company that combines a data-driven, people-first approach to bring the promise of precision health to everyone, every day. Within Verily, the Clinical Studies Platforms organization provides solutions to generate the data and evidence needed to inform critical treatment and care decisions. This function evolved from Project Baseline, a multi-year research initiative, and is composed of leading experts in clinical science, RWD and RWE, technology, and user experience. The team delivers research-ready datasets that bring together a wide variety of different sources of health data to represent the longitudinal health journey of individuals. To do this, Verily focuses on understanding permissions, enabling traceability, and solving for markedly different data integrity and quality.

Our solutions bring together evidence generation, care delivery, and care management in a connected and reinforcing ecosystem built to advance precision health, connecting research participants with studies and offering tools to improve clinical research. This includes **SignalPath**, a new state-of-the-art clinical trial management system (CTMS) that was built by researchers, for researchers, to dramatically improve the ease, quality, efficiency and profitability of trial execution.

AACI CRI Exhibitors

Veeva

Veeva is a Public Benefit Corporation and the global leader in cloud software for the clinical research industry, serving thousands of customers, ranging from the world's largest pharmaceutical companies to emerging sites. Veeva SiteVault is the only unified solution connecting sites with sponsors and patients to run digital trials. Streamline regulatory processes and connect to 400+ sponsors that use Veeva Clinical applications.

Vitalief

Vitalief was formed to address the Healthcare Human Capital Epidemic. The pandemic, the Great Resignation, and the simultaneous rise of remote work and the gig economy converged to create chaos, conflict, and confusion across the global economy. At the same time, attrition, decentralized trials, telehealth, and the expanded use of emerging technologies have changed how clinical trials are conducted. From this perfect storm of evolving needs and workplace challenges, Vitalief's innovative operating models have emerged to address the new realities of clinical research.

As a functional service provider (FSP), Vitalief is addressing the Healthcare Human Capital Epidemic with ground-breaking consulting, resourcing, managed services, and education. Our solutions target high-risk, high-value, and high-impact areas such as study activation, maximizing clinical trials office performance, streamlining onboarding, and promoting career growth with learning and development opportunities (Vitalief Academy). Our holistic approach delivers world-class expertise, efficient processes, and optimized infrastructure that result in better, more efficient clinical trials.

WCG

WCG accelerates the development of new medical therapies by improving the conduct and quality of clinical trials. Powered by our best-in-class technology and on-demand solutions, we partner with research institutions to shorten their study start-up timelines, alleviate resource constraints, and ensure financial success.

WellSky®

WellSky Biotherapies enhances the donor and patient experience, simplifies resource management, tracks clinical trials through post-transplant follow up, and shares individualized treatment outcomes with key stakeholders. WellSky is best positioned to meet the allogeneic and autologous supply chain management needs of blood and marrow transplant programs, cell processing labs, research, and manufacturing organizations, independent biobanks and repositories, and cord blood and tissue banks.

Yunu

Yunu provides medical research technology and services to life sciences companies and clinical research environments that perform precision imaging assessments. Yunu's aim is to ensure breakthrough therapies are accessible to everyone by unifying medical imaging insights and connecting clinical communities. With thousands of clinical trials relying on the platform each day, Yunu is delivering a new standard of oncology trial management.

TRIOMICS

Clinical data is vital for research, enabling accurate patient-study matching and informing **EDC/eCRF responses**. However, lack of standardization and interoperability, along with crucial information hidden in clinical notes, impedes the development of automated systems, leading to labor-intensive manual procedures like **chart reviews** and **double data entry from EHR to EDC**.

Triomics leads in solving these problems, employing a solution that harnesses commonly adopted data standards and **AI systems, such as language models**. Our technology transforms manual tasks like eligibility chart reviews and EDC data entry from EHRs into **efficient, automated processes, resulting in time and effort savings of over 80%**.

Learn more about us at:
www.triomics.com

Advancing Accessible, Inclusive, and Simplified Clinical Trials

Initiatives underway address:

- ▶ Patient and clinician access to trials in underserved areas
- ▶ Impact of protocol flexibilities during COVID-19 pandemic
- ▶ Administrative and regulatory burdens, including FDA Form 1572 challenges
- ▶ Screening and enrollment disparities



Stay tuned and learn more about [ASCO equity, diversity, and inclusion initiatives](#), [ASCO cancer research and statements](#), [research policy](#), and [access other clinical trial resources](#).

Questions? Contact research@asco.org



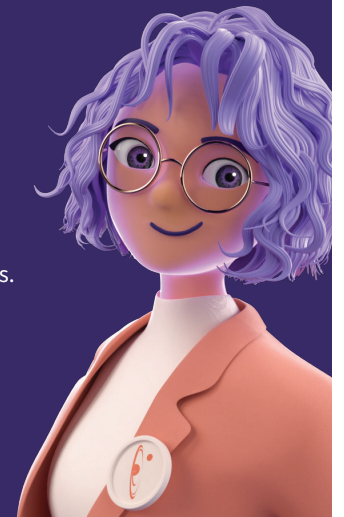
We value your decade-long trust in us managing your cancer research document workflows.

Now, it's **your turn to design the future** of how sponsors collaborate with you through technology.

Join the Site Enablement League – an exclusive alliance of 60+ research trailblazers. Collaborate, create, and lead the future of research, **putting sites first**.

Ask us how.

info@florencehc.com



Know what's on-site, where it's stored, and when it expires

Slope replaces inefficient manual processes, eliminating the chaos from inventory management and enabling more efficient trial operations.



Scan to request a demo of our FREE platform for sites

slopeclinical.com/request-demo



2023 AACI/CCAF Annual Meeting
October 1-3, 2023 — Salamander Washington, DC

REGISTER TODAY!

SAVE THE DATES



16th Annual AACI CRI Meeting
June 24-26, 2024 — Loews Chicago O'Hare Hotel
Rosemont, IL



2024 AACI/CCAF Annual Meeting
October 20-22, 2024 — Loews Chicago Hotel
Chicago, IL

Yunu for Cancer Centers



Yunu transforms clinical trial imaging workflow - solving today's biggest challenges for cancer centers, CROs, core labs, and sponsors.

- Simple administration
- Pristine imaging workflow
- Protocol standardization
- Proactive communication
- Rapid patient turn-around times
- Optimized imaging assessments
- Scalable staffing
- Audit-readiness

You've always known trial imaging workflows were broken, **let us show you a new way forward.**

CONTACT US

yunu.io info@yunu.io